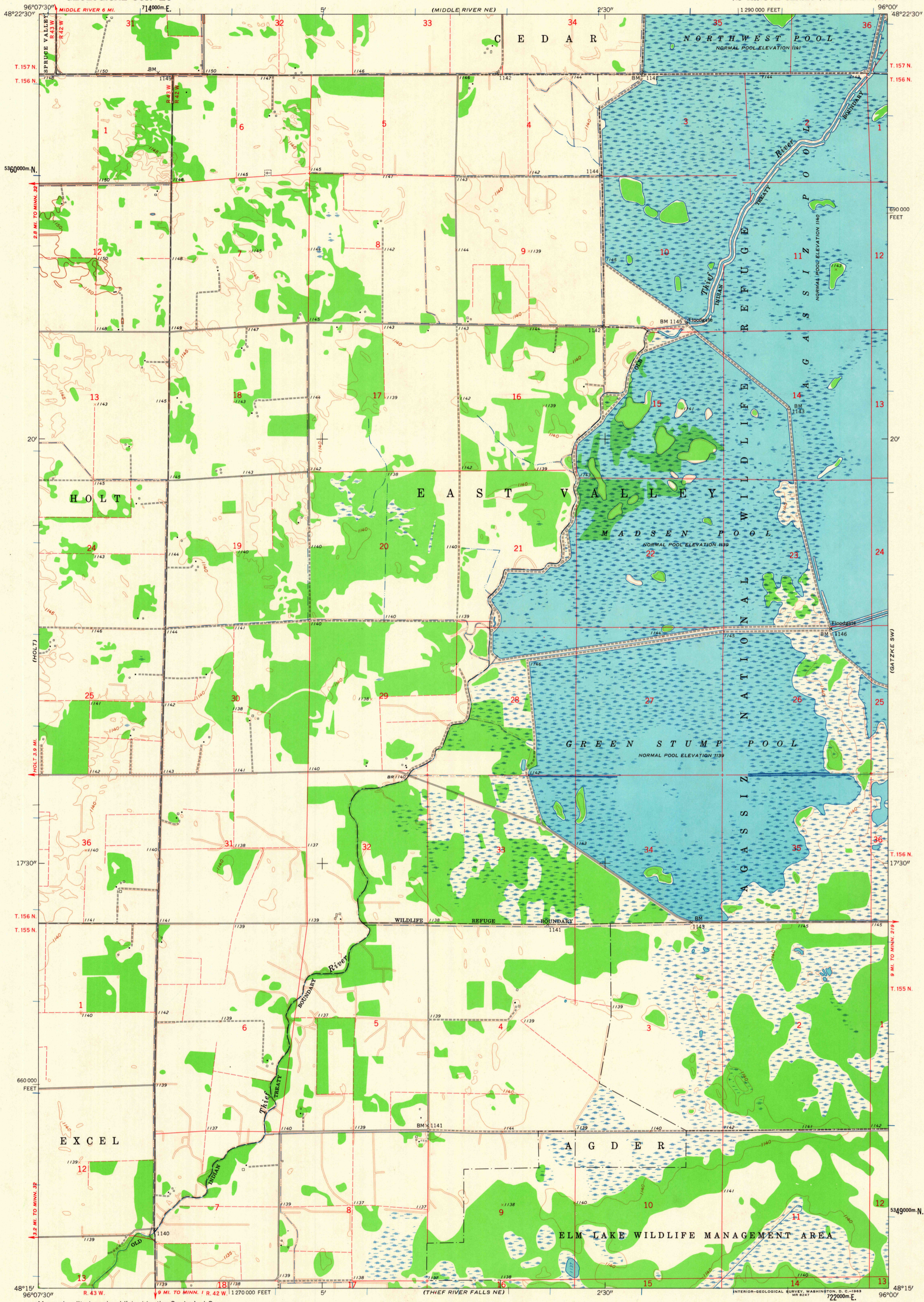


UNITED STATES  
DEPARTMENT OF THE INTERIOR  
GEOLOGICAL SURVEY

MIDDLE RIVER SE QUADRANGLE  
MINNESOTA - MARSHALL CO.  
7.5 MINUTE SERIES (TOPOGRAPHIC)

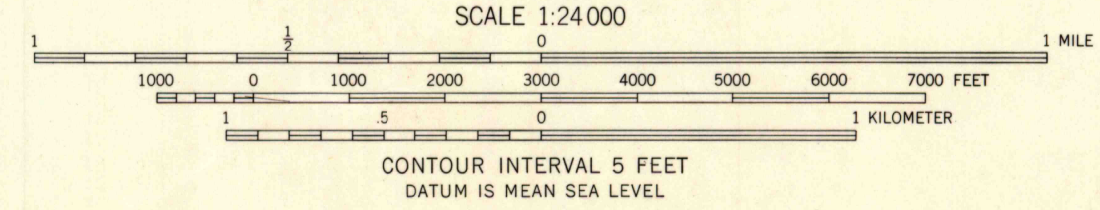
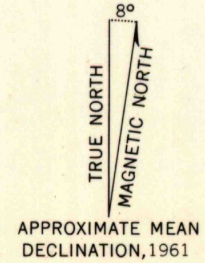


Mapped, edited, and published by the Geological Survey  
Control by USGS and USC&GS

Planimetry by photogrammetric methods from aerial photographs  
taken 1954. Topography by planimetric surveys 1961

Polyconic projection. 1927 North American datum  
10,000-foot grid based on Minnesota coordinate system, north zone  
1000-meter Universal Transverse Mercator grid ticks,  
zone 14, shown in blue

Fine red dashed lines indicate selected fence and field lines where  
generally visible on aerial photographs. This information is unchecked



USGS  
Historical File  
Topographic Division

ROAD CLASSIFICATION  
Light-duty ————— Unimproved dirt - - - - -



MIDDLE RIVER SE, MINN.  
N4815-W9600/7.5

THIS MAP COMPLIES WITH NATIONAL MAP ACCURACY STANDARDS  
FOR SALE BY U. S. GEOLOGICAL SURVEY, DENVER 25, COLORADO OR WASHINGTON 25, D. C.  
A FOLDER DESCRIBING TOPOGRAPHIC MAPS AND SYMBOLS IS AVAILABLE ON REQUEST

1961

U.S.G.S.  
FILE COPY  
TOPOGRAPHIC DIVISION  
2095  
OCT - 9 1961