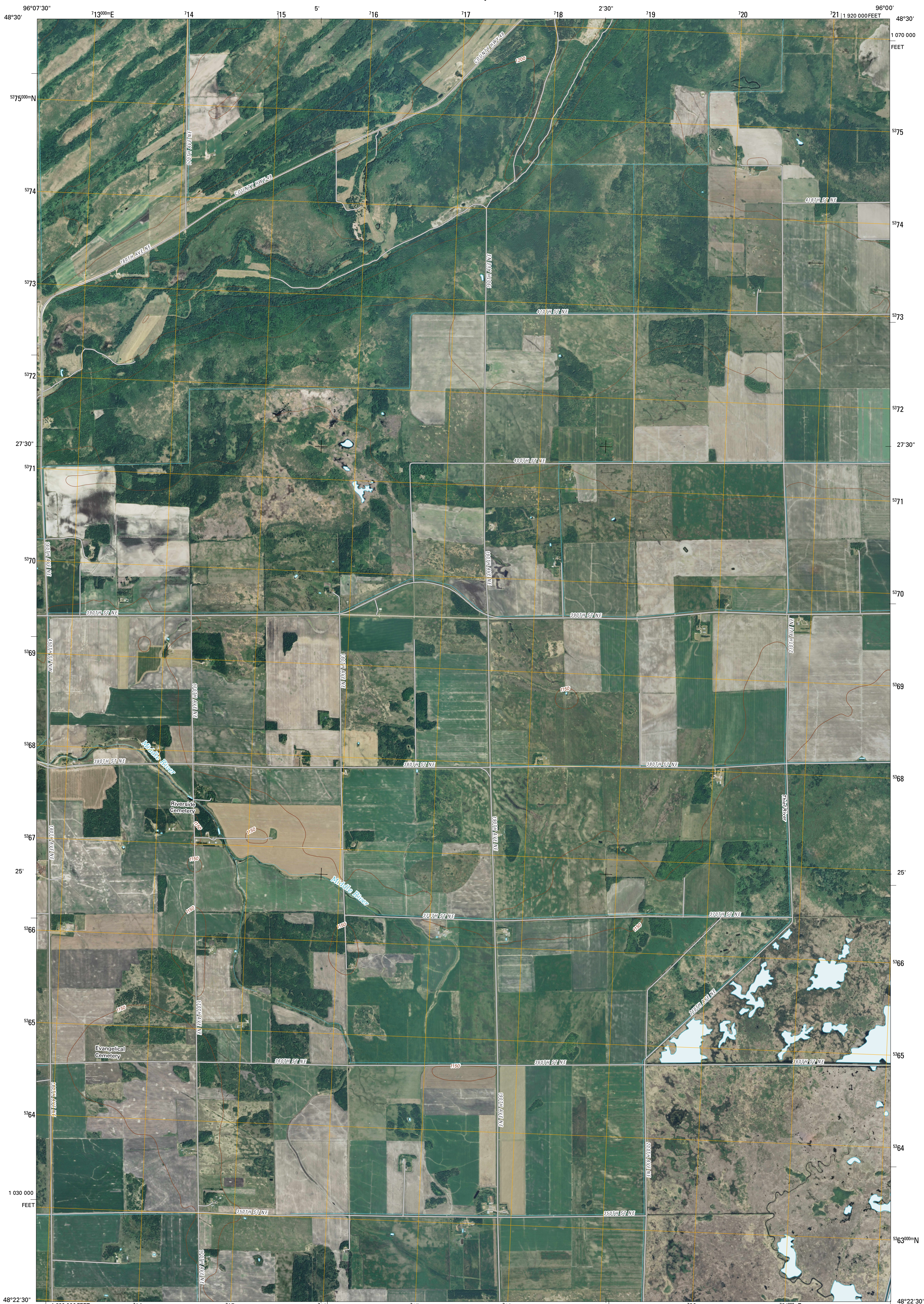




U.S. DEPARTMENT OF THE INTERIOR
U. S. GEOLOGICAL SURVEY



MIDDLE RIVER NE QUADRANGLE
MINNESOTA
7.5-MINUTE SERIES



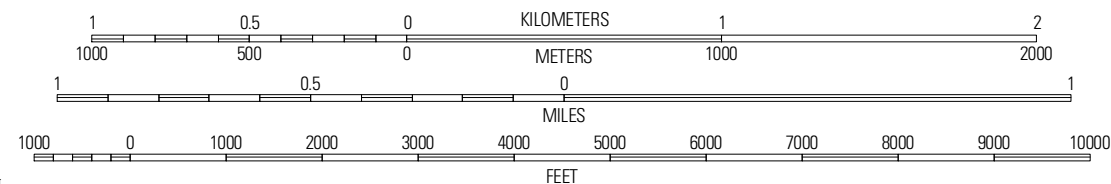
Produced by the United States Geological Survey
North American Datum of 1983 (NAD83)
World Geodetic System of 1984 (WGS84). Projection and
1 000-meter grid; Universal Transverse Mercator, Zone 14U
10 000-foot ticks; Minnesota Coordinate System of 1983
(north zone)

Imagery.....NAIP, June 2009
Roads.....62006-2010 T4e; Atlas
Names.....GNIS, 2008
Hydrography.....National Hydrography Dataset, 2009
Contours.....National Elevation Dataset, 1999

UTM GRID AND 2010 MAGNETIC NORTH
DECLINATION AT CENTER OF SHEET

U.S. National Grid 100 000m Square ID
0U
Grid Zone Designation 14U

SCALE 1:24 000



CONTOUR INTERVAL 10 FEET
NORTH AMERICAN VERTICAL DATUM OF 1988

This map was produced to conform with version 0.5.10 of the
draft USGS Standards for 7.5-Minute Quadrangle Maps.
A metadata file associated with this product is draft version 0.5.11



ROAD CLASSIFICATION

Interstate Route	State Route
US Route	Local Road
Ramp	4WD

Interstate Route
 US Route
 State Route

QUADRANGLE LOCATION

Strathcona	Greenbush SE	Thief Lake
Middle River	Middle River NE	Gatzke NW
Holt	Middle River SE	Gatzke SW

ADJOINING 7.5' QUADRANGLES

MIDDLE RIVER NE, MN
2010