

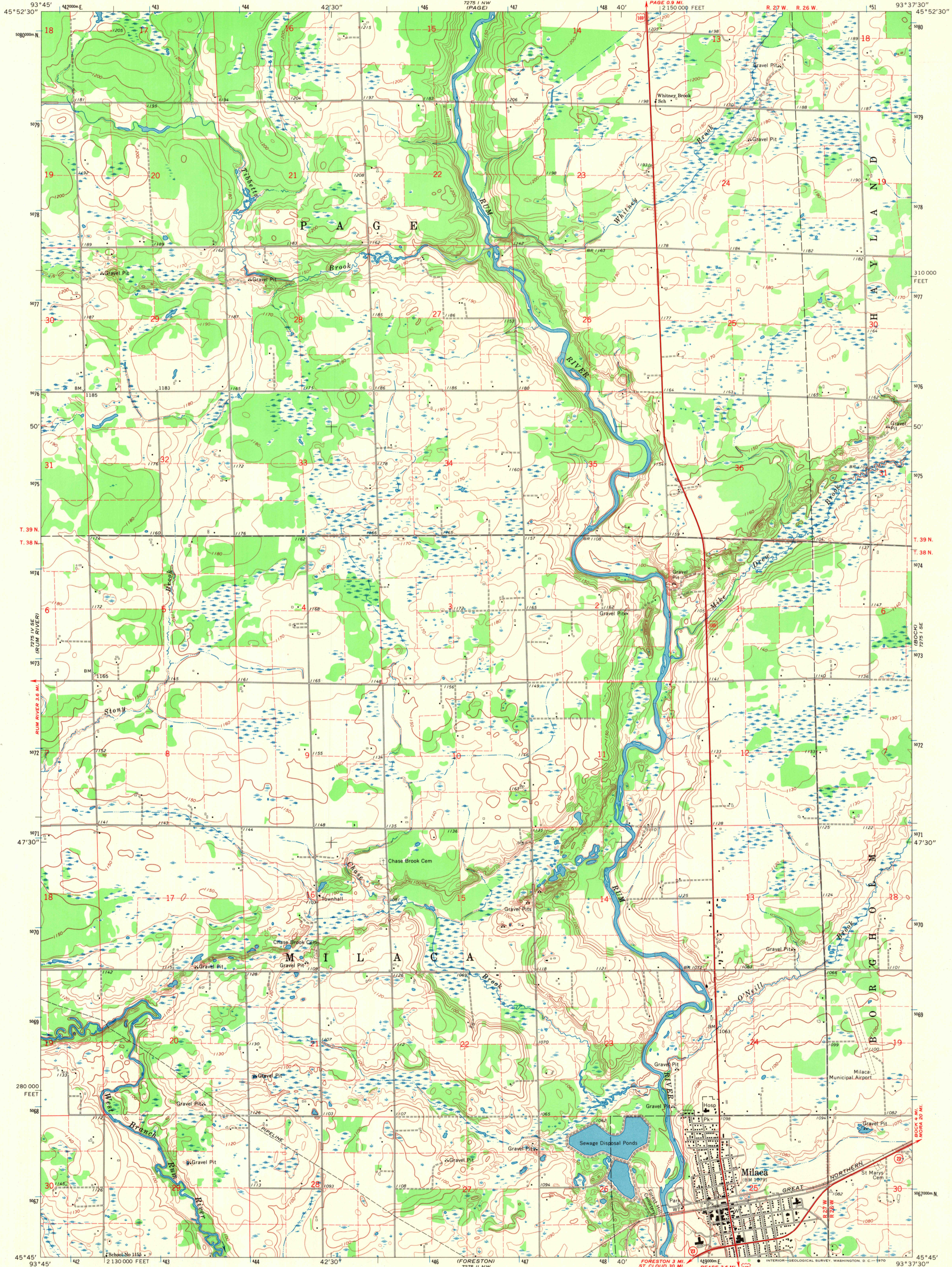
7275 I NE
7275 I NE
(FRAME 1)

UNITED STATES
DEPARTMENT OF THE INTERIOR
GEOLOGICAL SURVEY

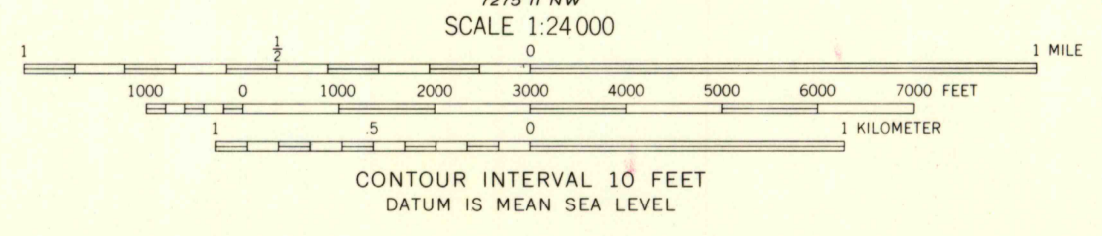
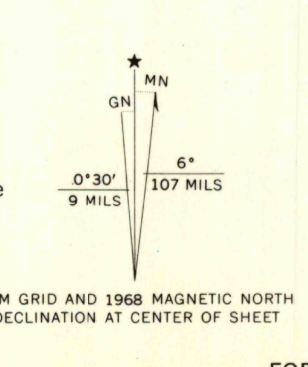
STATE OF MINNESOTA
DEPARTMENT OF ADMINISTRATION

MILACA QUADRANGLE
MINNESOTA—MILLE LACS CO.
7.5 MINUTE SERIES (TOPOGRAPHIC)

7275 I NE
7275 I NE
(MILACA 1)

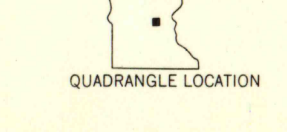


Mapped, edited, and published by the Geological Survey
Control by USGS and USC&GS
Topography by photogrammetric methods from aerial
photographs taken 1966. Field checked 1968
Polyconic projection. 1927 North American datum
10,000-foot grid based on Minnesota coordinate system, central zone
1000-meter Universal Transverse Mercator grid ticks,
zone 15, shown in blue
Fine red dashed lines indicate selected fence and field lines
where generally visible on aerial photographs
This information is unchecked



USGS
Historical File
Topographic Division

ROAD CLASSIFICATION
Primary highway, all weather, improved surface
Light-duty road, all weather, hard surface
Unimproved road, fair or dry weather
U. S. Route
State Route



THIS MAP COMPLIES WITH NATIONAL MAP ACCURACY STANDARDS
FOR SALE BY U. S. GEOLOGICAL SURVEY, DENVER, COLORADO 80225, OR WASHINGTON, D. C. 20242
A FOLDER DESCRIBING TOPOGRAPHIC MAPS AND SYMBOLS IS AVAILABLE ON REQUEST

MILACA, MINN.
N4545—W9337.5/7.5

1968
ANS 7275 I SW—SERIES V872

3190
OCT 14 1970