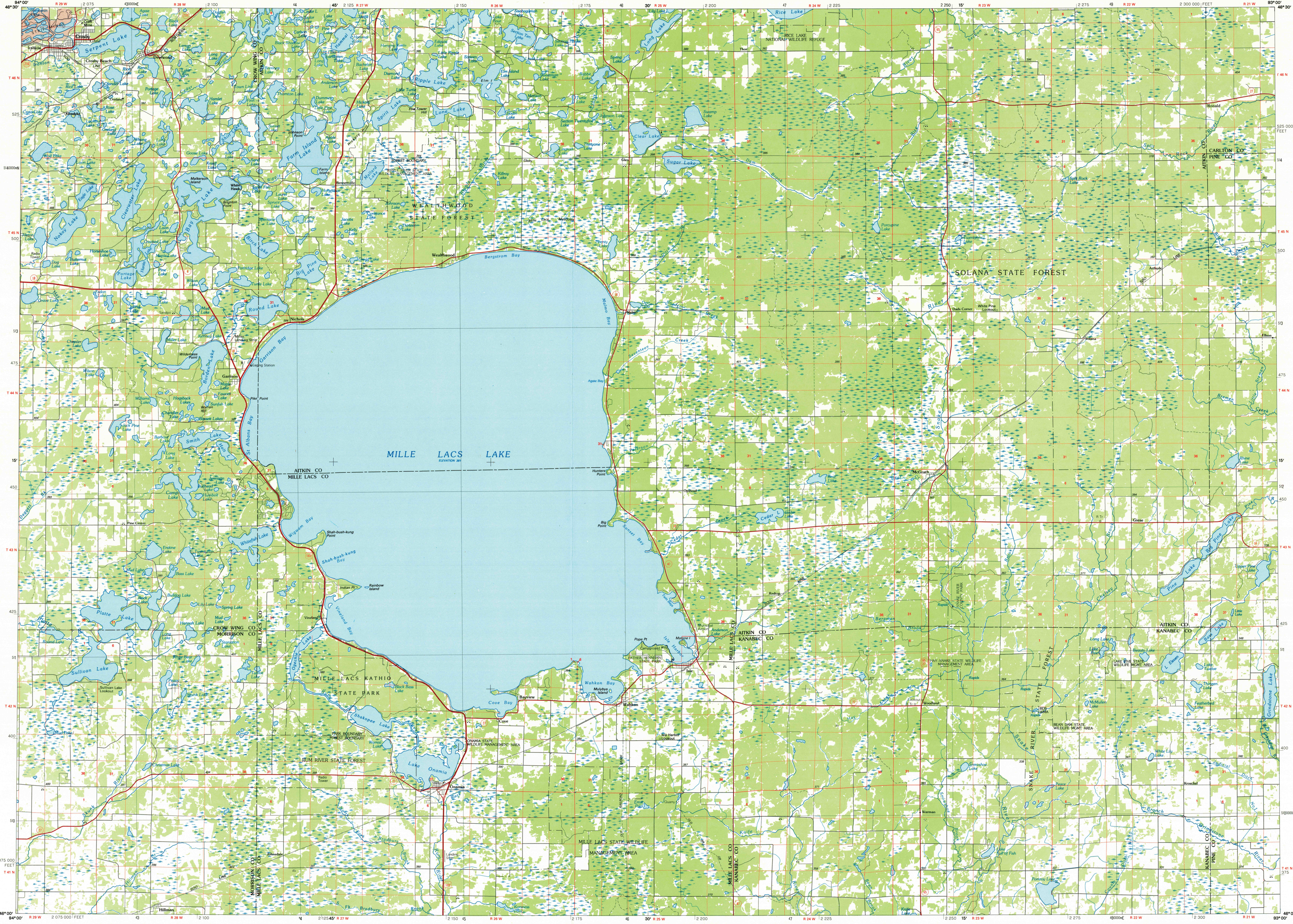


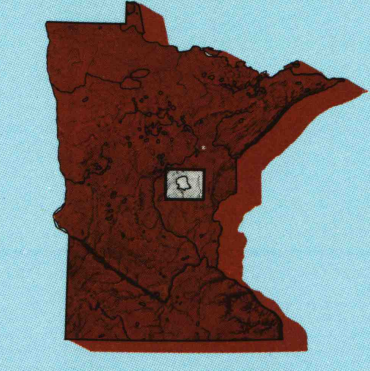
MILLE LACS LAKE, MINNESOTA

30 X 60 MINUTE SERIES (PLANIMETRIC)



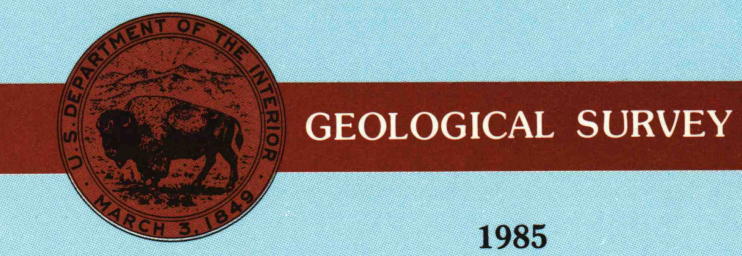
Mille Lacs Lake MINNESOTA

1:100 000-scale planimetric map



30 X 60 MINUTE QUADRANGLE SHOWING

- Elevations in meters
- Highways, roads and other manmade structures
- Water features
- Woodland areas
- Geographic names



Produced by the United States Geological Survey
 Compiled from USGS 1:24 000-scale topographic maps dated 1968-1973. Planimetry revised from aerial photographs taken 1976 and 1982 and other source data. Revised information not field checked. Map edited 1985.
 Projection and 10 000-meter grid, zone 15, Universal Transverse Mercator
 25 000-foot grid ticks based on Minnesota coordinate system, central zone
 1927 North American Datum
 To place on the predicted North American Datum 1983, move the projection lines 8 meters north and 17 meters east
 There may be private inholdings within the boundaries of the National or State reservations shown on this map

NATIONAL GEODETIC VERTICAL DATUM OF 1929 ELEVATIONS SHOWN TO THE NEAREST METER

THIS MAP COMPLES WITH NATIONAL MAP ACCURACY STANDARDS

CONVERSION TABLE		DECLINATION DIAGRAM	ADJOINING MAPS									
Meters	Feet	<p>UTM grid convergence (ENU) and 1983 magnetic declination (MM) at center of map Diagram is approximate</p>	<table border="1"> <tr><td>1</td><td>2</td><td>3</td></tr> <tr><td>4</td><td>5</td><td>6</td></tr> <tr><td>7</td><td>8</td><td></td></tr> </table> <p>1 Pine River 2 Aitkin 3 Duluth 4 Brainerd 5 Sandstone 6 Saint Cloud 7 Mora 8 Grandburg</p>	1	2	3	4	5	6	7	8	
1	2			3								
4	5			6								
7	8											
1	3.2808											
2	6.5617											
3	9.8425											
4	13.1234											
5	16.4042											
6	19.6850											
7	22.9659											
8	26.2467											
9	29.5275											
10	32.8084											
To convert meters to feet multiply by 3.2808												
To convert feet to meters multiply by 0.3048												

FOR SALE BY U.S. GEOLOGICAL SURVEY RESTON, VIRGINIA 22092

Topographic Map Symbols

- Primary highway, hard surface
- Secondary highway, hard surface
- Light duty road, principal street, hard or improved surface
- Other road or street, trail
- Route marker: Interstate, U.S. State
- Railroad: standard gauge, narrow gauge
- Bridge: overpass, underpass
- Tunnel: road, railroad
- Build up area, locality, elevation
- Airport: landing field, landing strip
- National boundary
- State boundary
- County boundary
- National or State reservation boundary
- Land grant boundary
- U.S. public lands survey: range, township, section
- Range, township, section line: protracted
- Power transmission line: pipeline
- Dam: dam with lock
- Windmill; water well; spring
- Mine shaft: adit or cave; mine, quarry, gravel pit
- Campground; picnic area; U.S. location monument
- Ruins; cliff dwelling
- Distorted surface: strip mine, lava, sand
- Contours: index, intermediate, supplementary
- Bathymetric contours: index, intermediate
- Stream, lake: perennial, intermittent
- Rapids, large and small; falls, large and small
- Area to be submerged; marsh, swamp
- Land subject to controlled inundation; woodland
- Swath; mangrove
- Orders; viewpoint

A pamphlet describing topographic maps is available on request