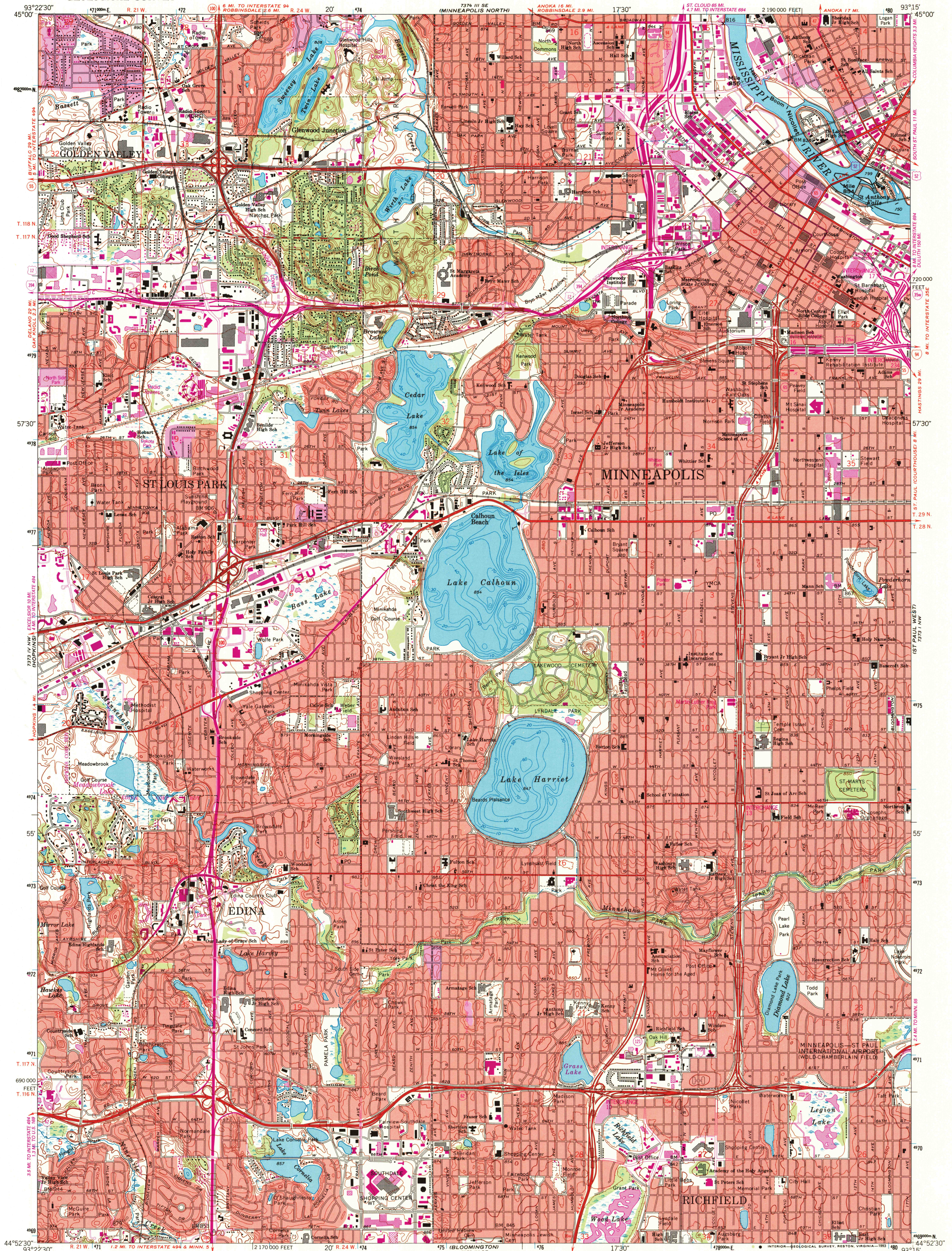


73° 15' W
1:250,000

73° 15' W
1:250,000



Produced by the United States Geological Survey
Control by USGS, NOS/NOAA and USCE

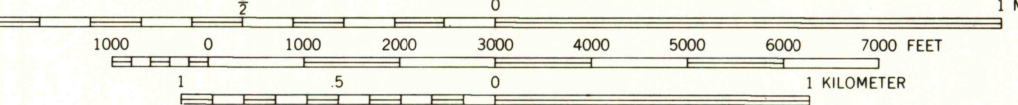
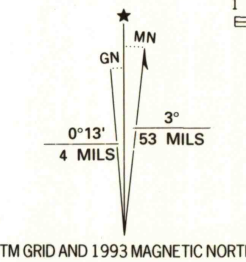
Topography by photogrammetric methods from aerial photographs
taken 1947. Field checked 1952. Revised from aerial photographs
taken 1966. Field checked 1967. Map edited 1967

Hydrography compiled from information furnished by
Minnesota Department of Natural Resources

Projection and 10,000-foot grid ticks: Minnesota coordinate
system, south zone (Lambert conformal conic)
1000-meter Universal Transverse Mercator grid ticks, zone 15, shown in blue
1927 North American Datum (NAD 27)

North American Datum of 1983 (NAD 83) is shown by dashed corner ticks
The values of the shift between NAD 27 and NAD 83 for 7.5-minute
intersections are given in USGS Bulletin 1875

Red tint indicates areas in which only landmark buildings are shown



SCALE 1:24,000
CONTOUR INTERVAL 10 FEET
NATIONAL GEODETIC VERTICAL DATUM OF 1929

THIS MAP COMPLIES WITH NATIONAL MAP ACCURACY STANDARDS
FOR SALE BY U.S. GEOLOGICAL SURVEY
DENVER, COLORADO 80225, OR RESTON, VIRGINIA 22092
A FOLDER DESCRIBING TOPOGRAPHIC MAPS AND SYMBOLS IS AVAILABLE ON REQUEST



ROAD CLASSIFICATION

| | |
|------------------|-----------------|
| Heavy-duty | Light-duty |
| Medium-duty | Unimproved dirt |
| Interstate Route | U.S. Route |
| | State Route |

MINNEAPOLIS SOUTH, MINN.
44093H3-TF-024

1967
REVISED 1993
DMA 7373 IV NE-SERIES V872

Revisions shown in purple and woodland compiled in cooperation with
State of Minnesota agencies from aerial photographs taken 1991 and
other sources. This information not field checked. Map edited 1993

