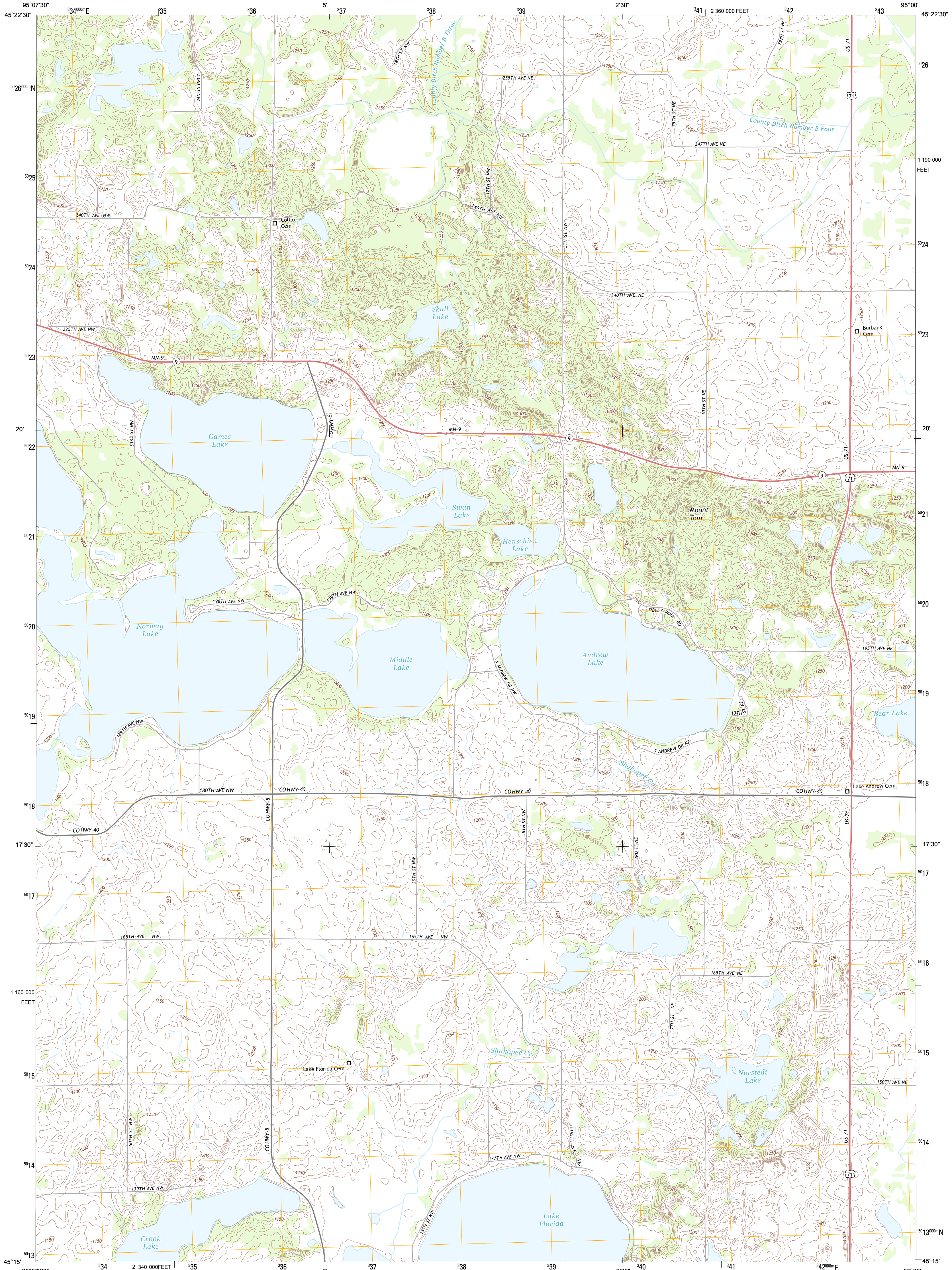




U.S. DEPARTMENT OF THE INTERIOR
U. S. GEOLOGICAL SURVEY

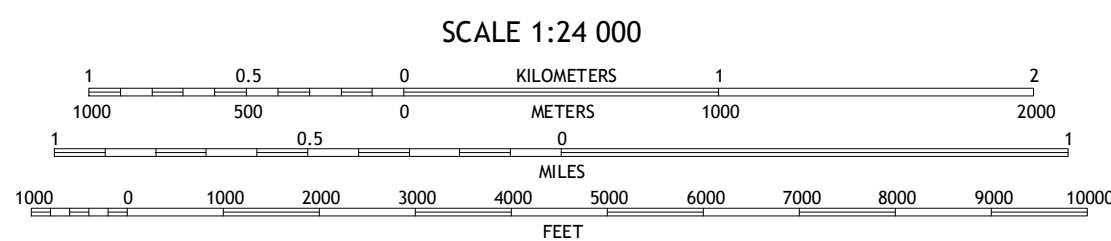
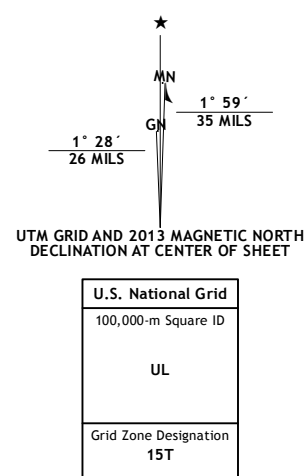


MOUNT TOM QUADRANGLE
MINNESOTA-KANDIYOHI CO.
7.5-MINUTE SERIES



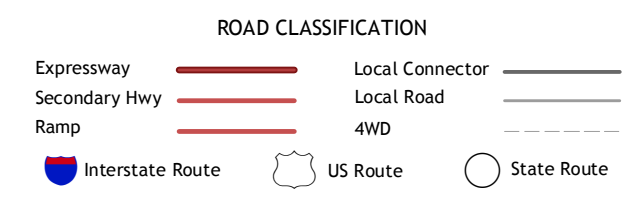
Produced by the United States Geological Survey
North American Datum of 1983 (NAD83)
World Geodetic System of 1984 (WGS84). Projection and
1 000-meter grid: Universal Transverse Mercator, Zone 15T
10 000-foot ticks: Minnesota Coordinate System of 1983 (south zone)

Imagery.....NAIP, June 2010
Roads.....C2006-2012 Tom Tom
Names.....GNIS, 2013
Hydrography.....National Hydrography Dataset, 2010
Contours.....National Elevation Dataset, 2013
Boundaries.....Census, IBC, USGS, 1972 - 2012



QUADRANGLE LOCATION

Lake Johanna	Belgrade	Georgetown
Sunburg	Mount Tom	New London
Penock	Solomon Lake	Spicer



MOUNT TOM, MN
2013

ADJOINING 7.5' QUADRANGLES