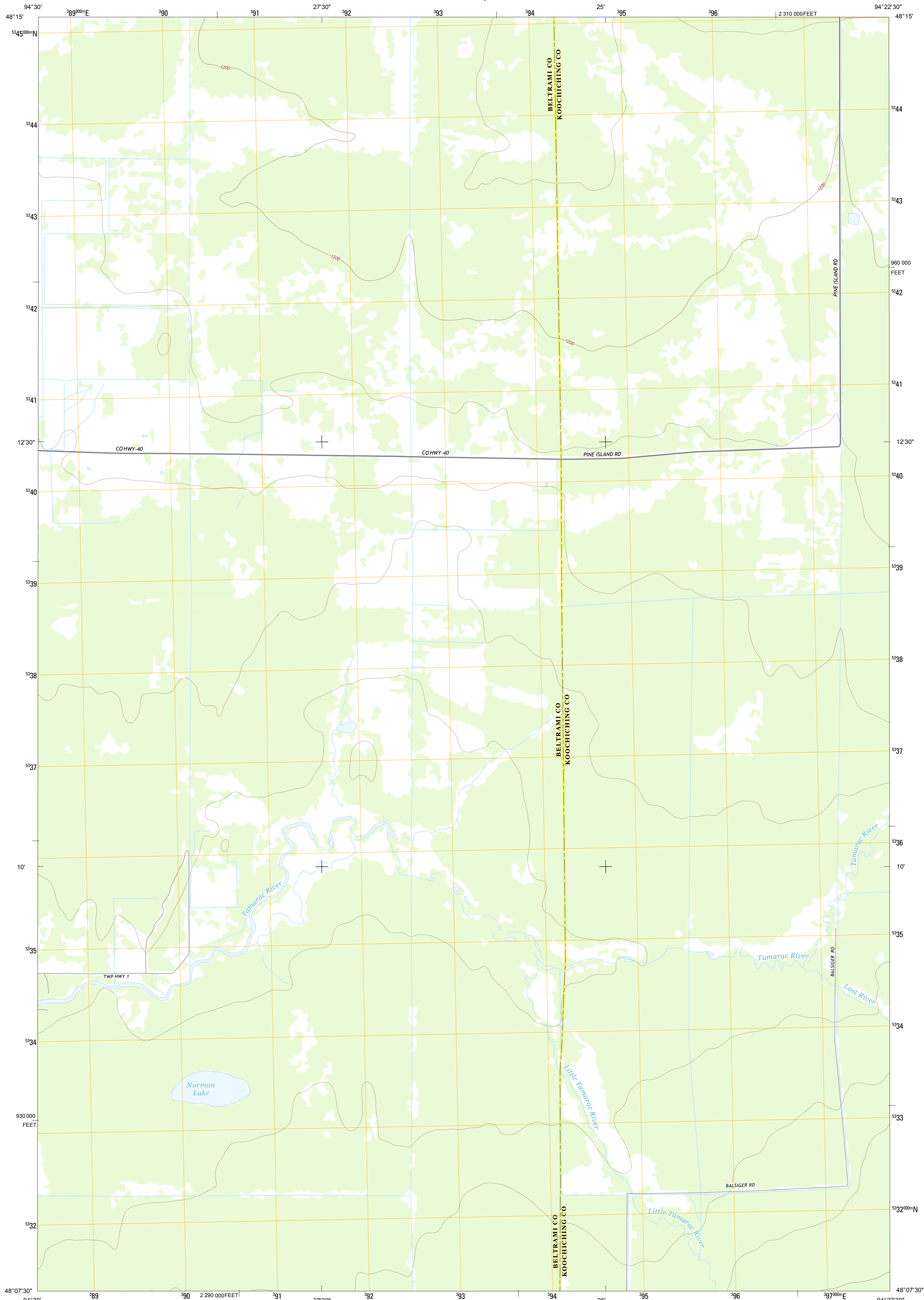




U.S. DEPARTMENT OF THE INTERIOR
U. S. GEOLOGICAL SURVEY



NORMAN LAKE QUADRANGLE
MINNESOTA
7.5-MINUTE SERIES



Produced by the United States Geological Survey
North American Datum of 1983 (NAD83)
World Geodetic System of 1984 (WGS84). Projection and
1 000-meter grid: Universal Transverse Mercator, Zone 15U
10 000-foot ticks: Minnesota Coordinate System of 1983 (north
zone)

Imagery.....NAIP, July 2010
Roads.....©2006-2012 TomTom
Names.....GHS, 2013
Hydrography.....National Hydrography Dataset, 2010
Contours.....National Elevation Dataset, 2012
Boundaries.....Census, IBWC, IBC, USGS, 1972 - 2012

UTM GRID AND 2013 MAGNETIC NORTH DECLINATION AT CENTER OF SHEET

U.S. National Grid
100,000-m Square ID
UP
Grid Zone Designation 15U



CONTOUR INTERVALS FEET
NORTH AMERICAN VERTICAL DATUM OF 1988

This map was produced to conform with the
National Geospatial Program US Topo Product Standard, 2011.
A metadata file associated with this product is draft version 0.6.11



Ludlow Lookout Tower	Wayland SW	Wayland SE
Waskish	Norman Lake SW	Norman Lake NE
Shotley Brook	Norman Lake SW	Norman Lake SE

ROAD CLASSIFICATION

Expressway
Secondary Hwy
Ramp
Interstate Route
US Route
State Route

Local Connector
Local Road
4WD

NORMAN LAKE, MN
2013

ADJOINING 7.5 QUADRANGLES