

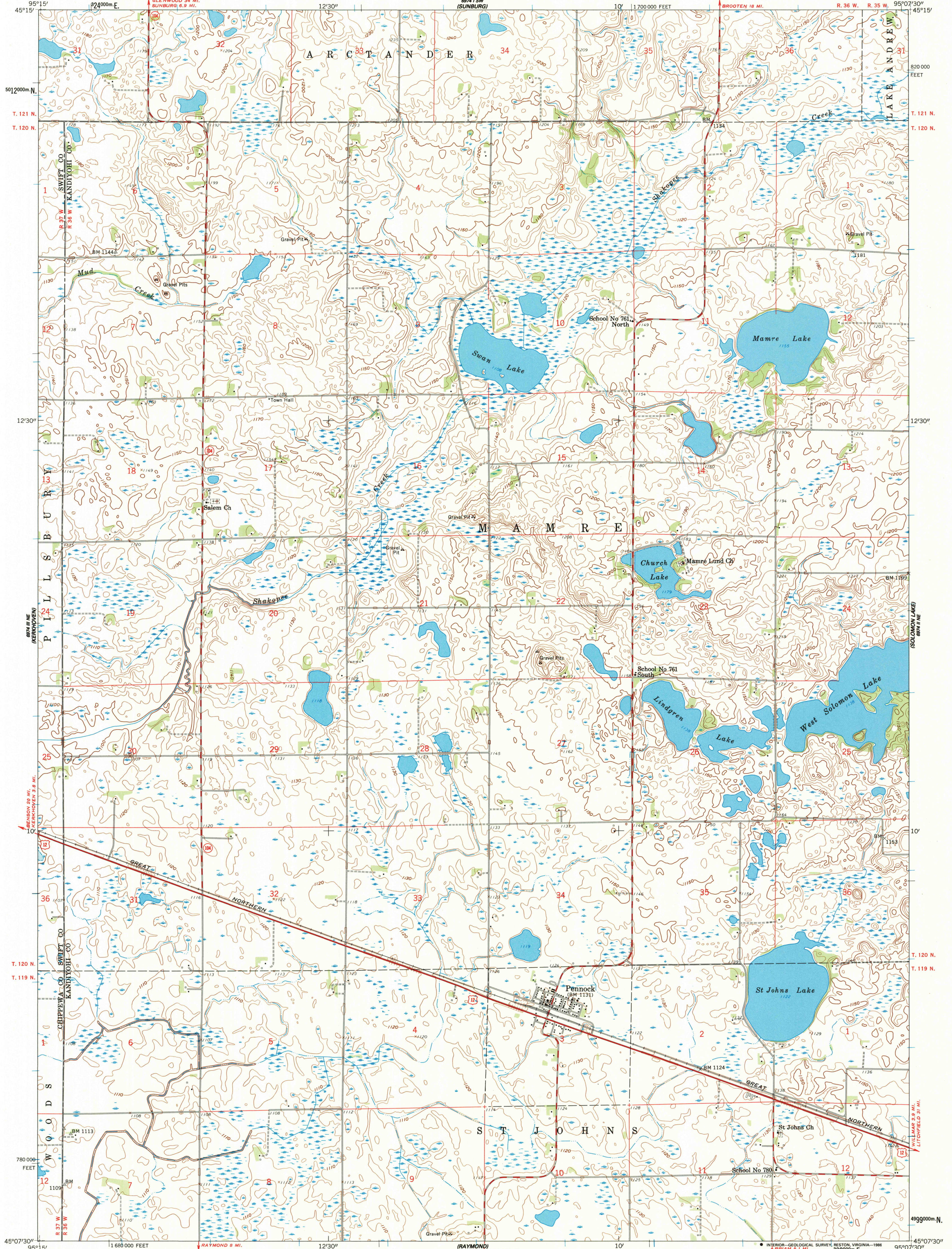
6974 NE
(SUNBURG)

UNITED STATES
DEPARTMENT OF THE INTERIOR
GEOLOGICAL SURVEY

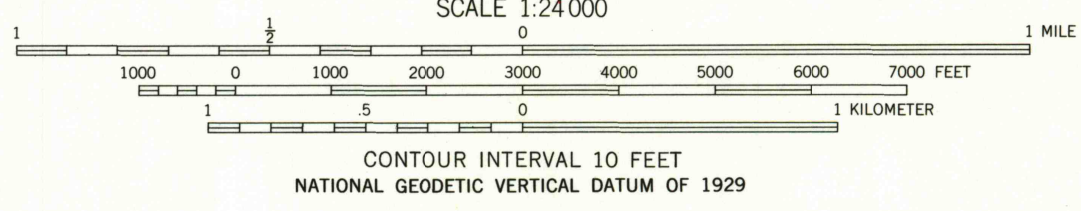
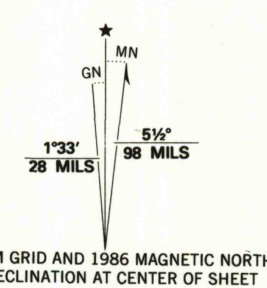
STATE OF MINNESOTA
DEPARTMENT OF CONSERVATION

PENNOCK QUADRANGLE
MINNESOTA
7.5 MINUTE SERIES (TOPOGRAPHIC)

6974 SE
(MT. TOM)



Mapped, edited, and published by the Geological Survey
Control by USGS and USC&GS
Topography from aerial photographs by photogrammetric methods
Aerial photographs taken 1956-1957. Field check 1958
Polyconic projection. 1927 North American datum
10,000-foot grid based on Minnesota coordinate system, south zone
1000-meter Universal Transverse Mercator grid ticks,
zone 15, shown in blue
To place on the predicted North American Datum 1983,
move the projection lines 7 meters north and
23 meters east as shown by dashed corner ticks



ROAD CLASSIFICATION

Heavy-duty	Light-duty
Medium-duty	Unimproved dirt
U.S. Route	State Route

THIS MAP COMPLIES WITH NATIONAL MAP ACCURACY STANDARDS
FOR SALE BY U.S. GEOLOGICAL SURVEY, DENVER, COLORADO 80225, OR RESTON, VIRGINIA 22092
A FOLDER DESCRIBING TOPOGRAPHIC MAPS AND SYMBOLS IS AVAILABLE ON REQUEST

PENNOCK, MINN.
45095-B2-TF-024

1958
DMA 6974 II NW-SERIES V872

