

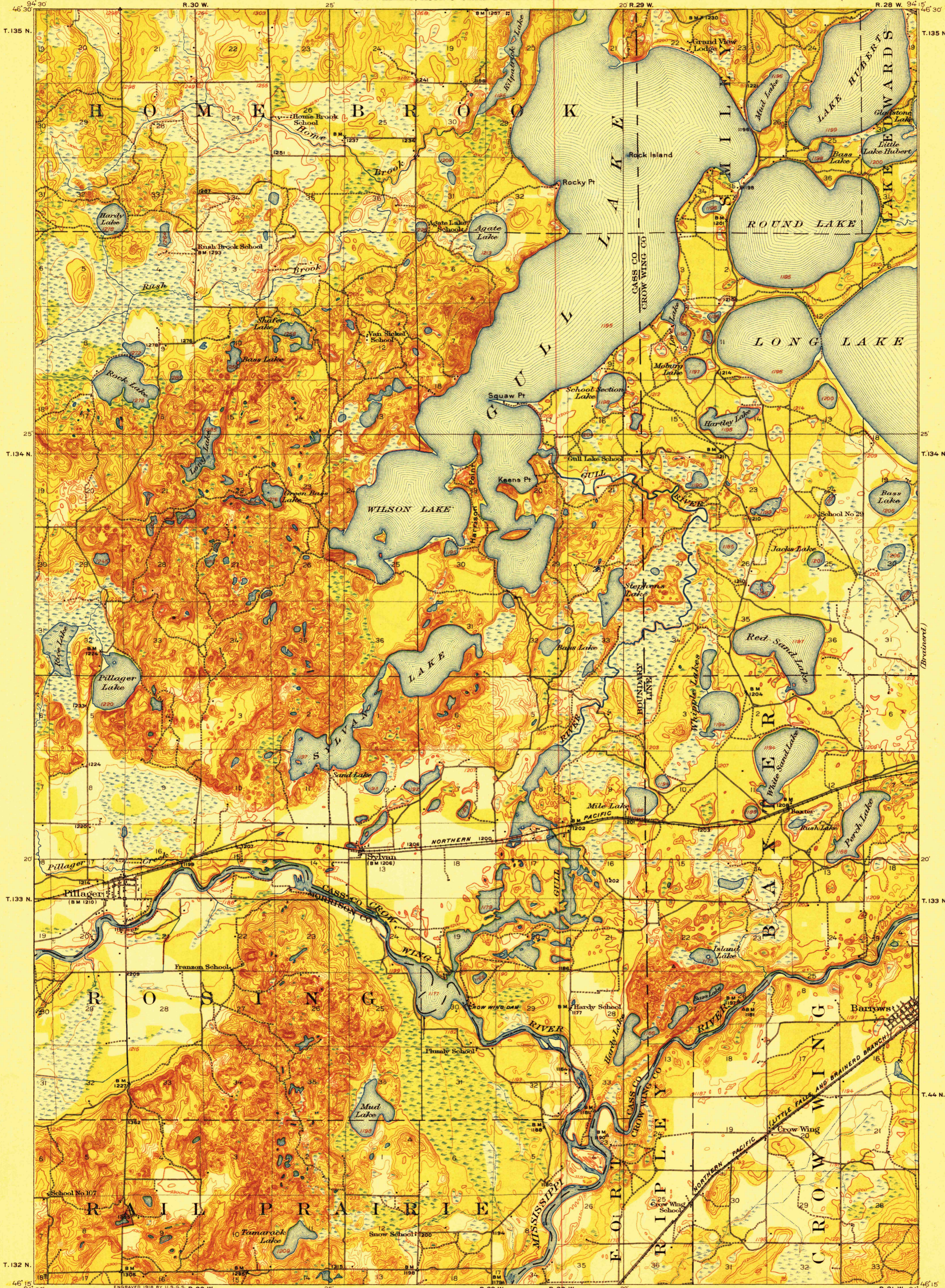
TOPOGRAPHY

STATE OF MINNESOTA

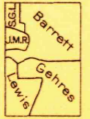
DEPARTMENT OF THE INTERIOR
FRANKLIN K. LANE, SECRETARY
U. S. GEOLOGICAL SURVEY
GEORGE OTIS SMITH, DIRECTOR

W. S. HAMMOND, GOVERNOR
J. A. O. PREUS, STATE AUDITOR
JULIUS A. SCHMAHL, SEC. OF STATE
E. V. WILLARD, ACTING STATE DRAINAGE ENGINEER

MINNESOTA
PILLAGER QUADRANGLE



W. H. Herron, Acting Chief Geographer.
Glenn S. Smith, Topographic Engineer in charge.
Topography by J. L. Lewis, S. G. Lunde,
F. B. Barrett, J. M. Rawls, and W. S. Gehres.
Control by U. S. Coast and Geodetic Survey,
Mississippi River Commission, J. H. Wilson, and
C. E. Mills.
Surveyed in 1916.



Scale 62500
Miles
Kilometers
Contour interval 10 feet.
Datum is mean sea level.

APPROXIMATE MEAN
DECLINATION, 1918

Edition of 1919.

PILLAGER

RETURN TO:
USGS NATIONAL MAP ARCHIVES
RESTON, VA 22092

SURVEYED IN COOPERATION WITH THE STATE OF MINNESOTA.