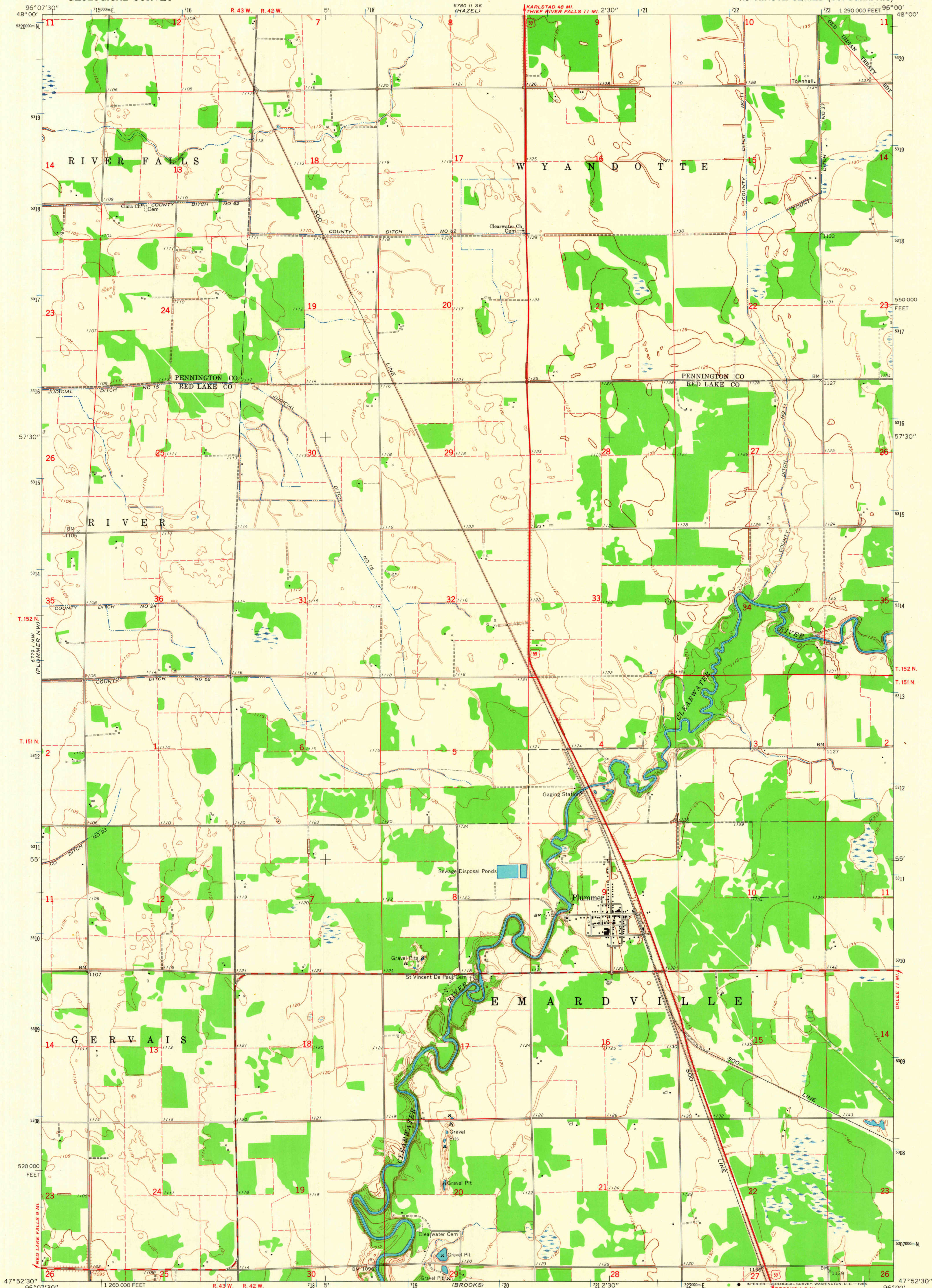


THIEF RIVER FALLS

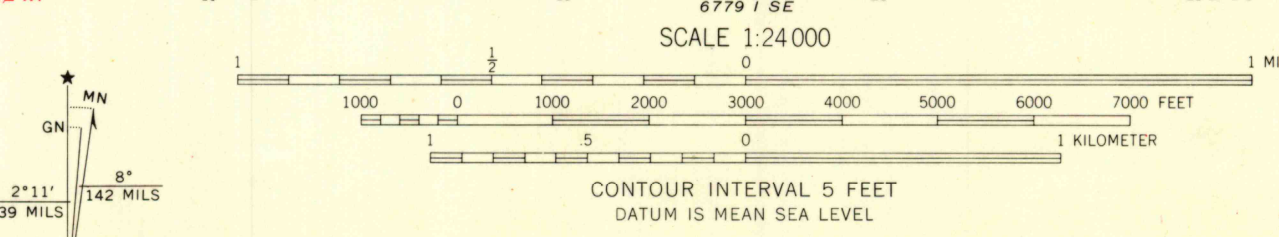
UNITED STATES  
DEPARTMENT OF THE INTERIOR  
GEOLOGICAL SURVEY

STATE OF MINNESOTA  
DEPARTMENT OF CONSERVATION

PLUMMER QUADRANGLE  
MINNESOTA  
7.5 MINUTE SERIES (TOPOGRAPHIC)



Mapped, edited, and published by the Geological Survey  
Control by USGS and USC&GS  
Planimetry by photogrammetric methods from aerial photographs  
taken 1963. Topography by planetable surveys 1964  
Polyconic projection. 1927 North American datum  
10,000-foot grid based on Minnesota coordinate system, north zone  
1000-meter Universal Transverse Mercator grid ticks,  
zone 14, shown in blue  
Fine red dashed lines indicate selected fence and field lines  
where generally visible on aerial photographs  
This information is unchecked



ROAD CLASSIFICATION  
 Heavy-duty ——— Light-duty ———  
 Medium-duty ——— Unimproved dirt - - - - -  
 U.S. Route



THIS MAP COMPLIES WITH NATIONAL MAP ACCURACY STANDARDS  
 FOR SALE BY U.S. GEOLOGICAL SURVEY, DENVER, COLORADO 80225, OR WASHINGTON, D.C. 20242  
 A FOLDER DESCRIBING TOPOGRAPHIC MAPS AND SYMBOLS IS AVAILABLE ON REQUEST

PLUMMER, MINN.  
N4752.5—W9600/7.5  
1964

AMS 6779 1E—SERIES V872

25  
480  
DEC 1 - 1  
U.S.G.  
FILE  
TOPOGRAPHIC