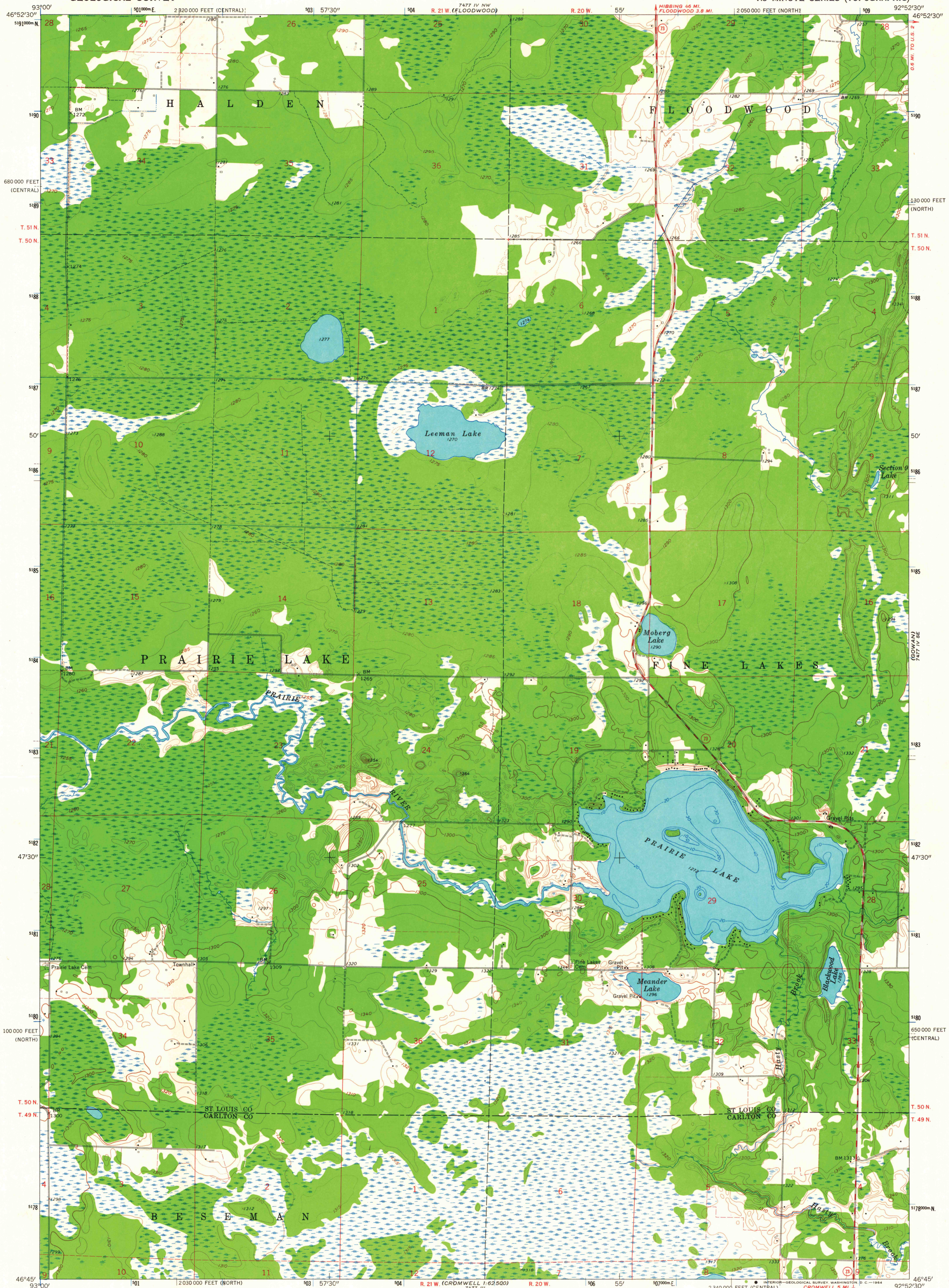


7477 IV NE
(WG CARTY 1/1/63)



Mapped, edited, and published by the Geological Survey
Control by USGS and USC&GS

Topography by photogrammetric methods from aerial
photographs taken 1953-54 and planimeter surveys 1963

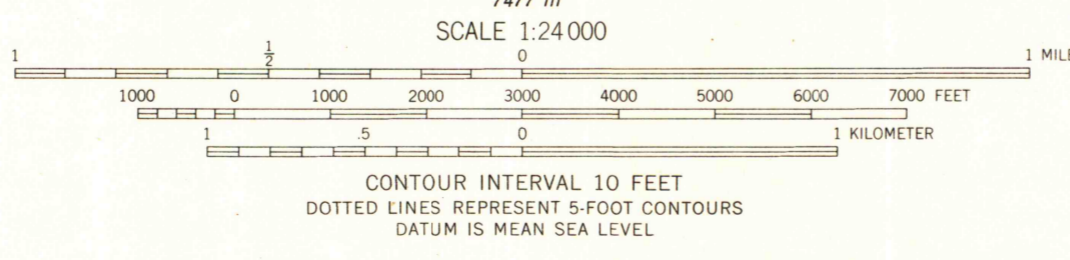
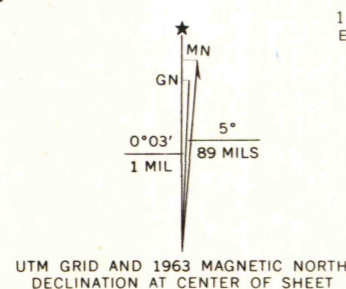
Depth curves compiled from charts furnished by
Minnesota Department of Conservation

Polyconic projection. 1927 North American datum

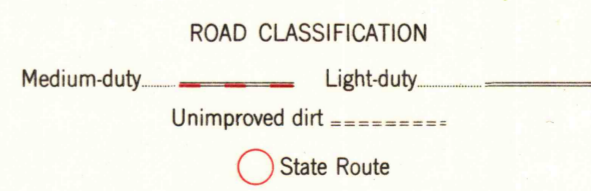
10,000-foot grids based on Minnesota coordinate system,
north and central zones

1000-meter Universal Transverse Mercator grid ticks,
zone 15, shown in blue

Fine red dashed lines indicate selected fence and field lines where
generally visible on aerial photographs. This information is unchecked



QUADRANGLE LOCATION



PRAIRIE LAKE, MINN.
N4645-W9252.5/7.5

1963

AMS 7477 IV SW-SERIES V872

THIS MAP COMPLIES WITH NATIONAL MAP ACCURACY STANDARDS
FOR SALE BY U. S. GEOLOGICAL SURVEY, DENVER 25, COLORADO OR WASHINGTON 25, D. C.
A FOLDER DESCRIBING TOPOGRAPHIC MAPS AND SYMBOLS IS AVAILABLE ON REQUEST

MAP AND AIR PHOTO LIBRARY
University of Wisconsin