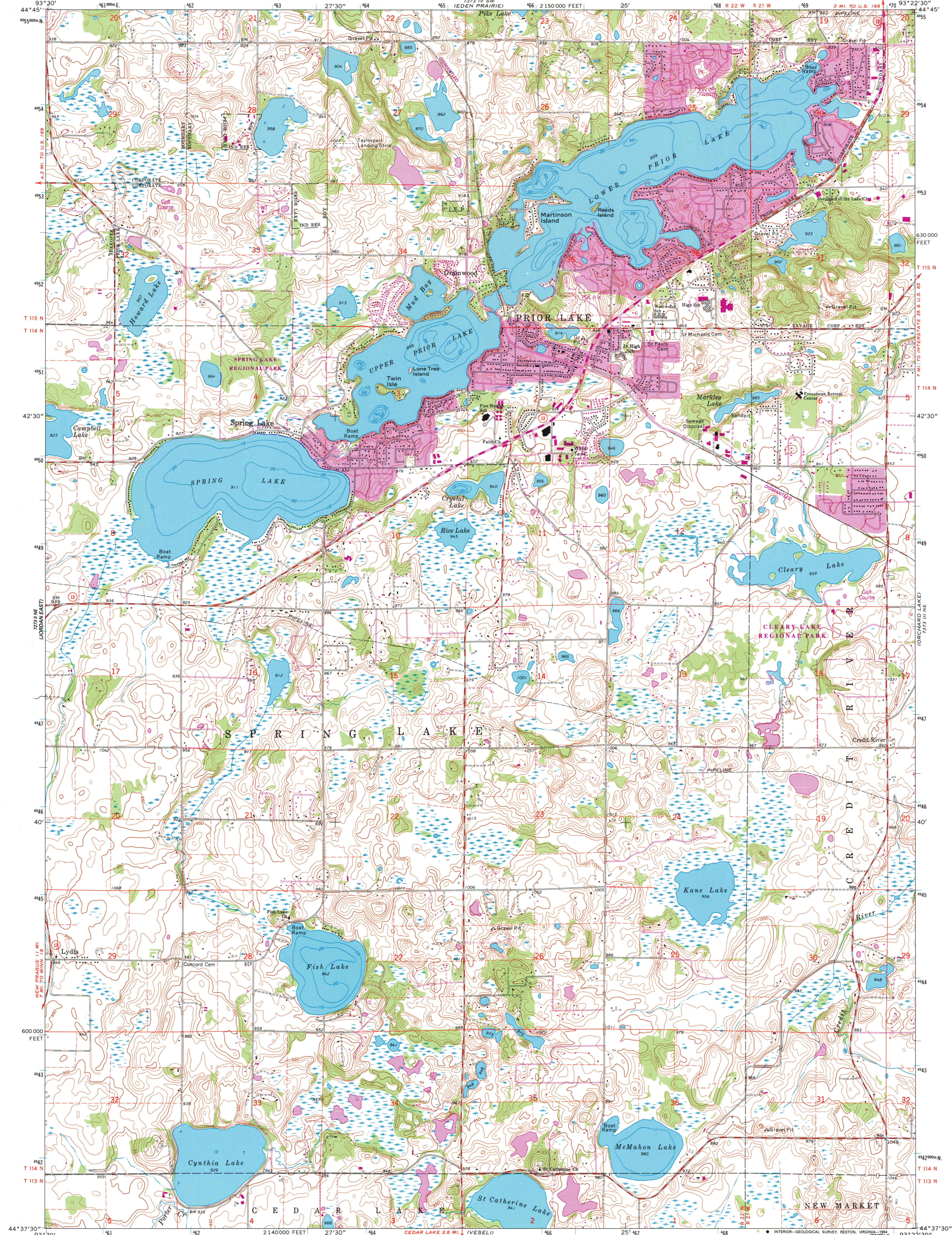
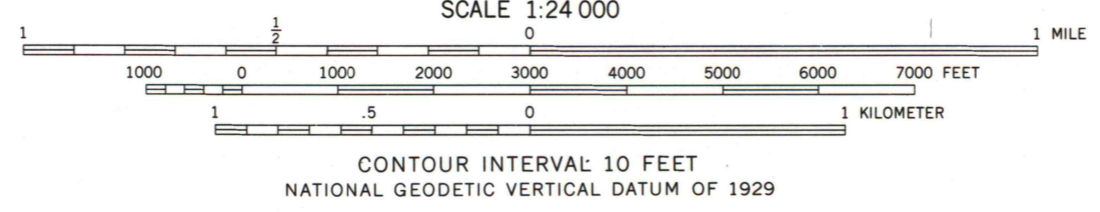
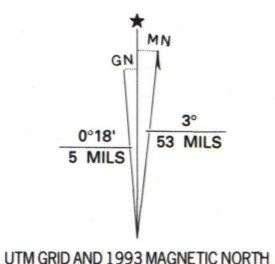


7233 1/2 SE  
(STANDARD)

7233 1/2 SE  
(BL 250000S 7000)



Produced by the United States Geological Survey  
Control by USGS and NOS/NOAA  
Topography by photogrammetric methods from aerial photographs taken 1973. Field checked 1974  
Hydrography compiled from information furnished by Minnesota Department of Natural Resources  
Projection and 10,000-foot grid ticks: Minnesota coordinate system, south zone (Lambert conformal conic)  
1000-meter Universal Transverse Mercator grid ticks, zone 15, shown in blue 1927 North American Datum (NAD 27)  
North American Datum of 1983 (NAD 83) is shown by dashed corner ticks  
The values of the shift between NAD 27 and NAD 83 for 7.5-minute intersections are given in USGS Bulletin 1875  
Fine red dashed lines indicate selected fence and field lines where generally visible on aerial photographs. This information is unchecked



ROAD CLASSIFICATION

Primary highway, hard surface	Light-duty road, hard or improved surface
Secondary highway, hard surface	Unimproved road
Interstate Route	U. S. Route
	State Route

PRIOR LAKE, MINN.  
NW/4 PRIOR LAKE 15' QUADRANGLE  
44093-F4-TF-024  
1974  
REVISED 1993  
DMA 7373 III NW - SERIES V872

Revisions shown in purple compiled in cooperation with State of Minnesota agencies from aerial photographs taken 1991-92 and other sources. This information not field checked. Map edited 1993  
Information shown in purple may not meet USGS content standards and may conflict with previously mapped contours  
Purple tint indicates extension of urban areas

THIS MAP COMPLIES WITH NATIONAL MAP ACCURACY STANDARDS FOR SALE BY U.S. GEOLOGICAL SURVEY DENVER, COLORADO 80225, OR RESTON, VIRGINIA 22092  
A FOLDER DESCRIBING TOPOGRAPHIC MAPS AND SYMBOLS IS AVAILABLE ON REQUEST

A.H. ROBINSON  
MAP LIBRARY  
FEB 10 1995  
University of Wisconsin  
Madison

U.S. Regional  
Depository Copy  
DO NOT DISCARD