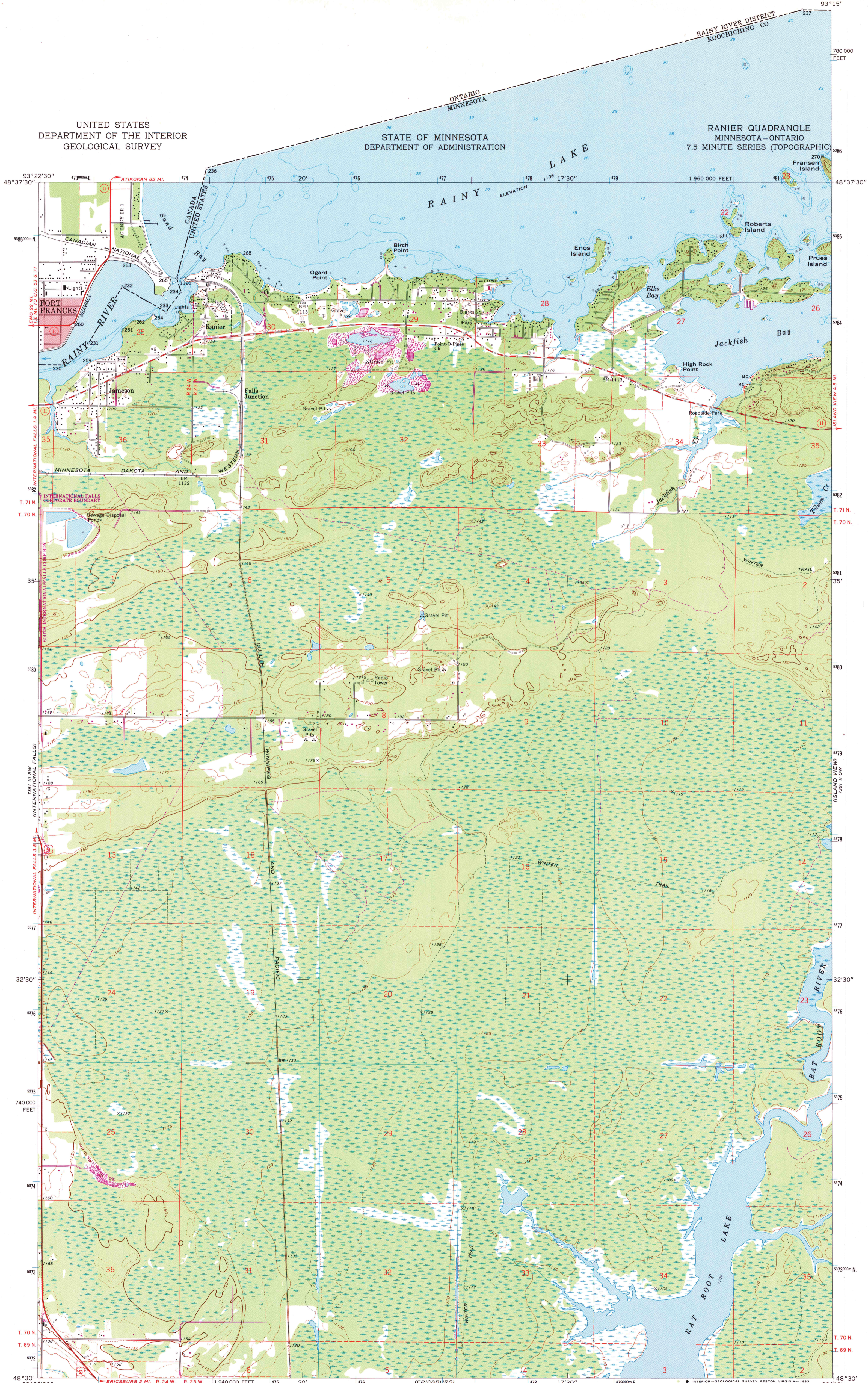


UNITED STATES
DEPARTMENT OF THE INTERIOR
GEOLOGICAL SURVEY

STATE OF MINNESOTA
DEPARTMENT OF ADMINISTRATION

RANIER QUADRANGLE
MINNESOTA-ONTARIO
7.5 MINUTE SERIES (TOPOGRAPHIC)



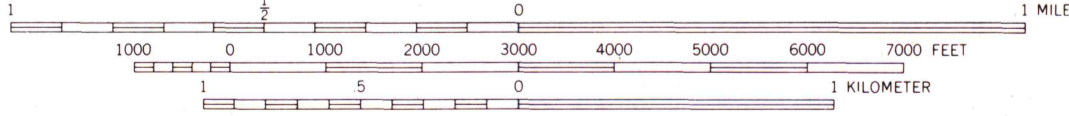
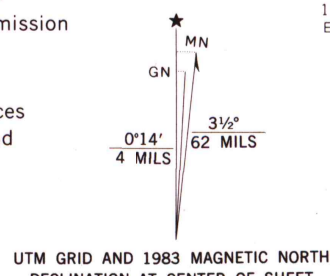
Mapped, edited, and published by the Geological Survey

Control by USGS, USC&GS, and International Boundary Commission
Topography by photogrammetric methods from aerial
photographs taken 1968. Field checked 1969
Canadian portion copied in part from advance print Fort Frances
quadrangle (1:40 000) 1964, Department of Energy, Mines and
Resources

Selected hydrographic data compiled from U. S. Lake Survey
Chart 823 (1965). This information is not intended
for navigational purposes

Polyconic projection. 1927 North American datum
10,000-foot grid based on Minnesota coordinate system, north zone
1000-meter Universal Transverse Mercator grid ticks,
zone 15, shown in blue

Red tint indicates area in which only landmark buildings are shown
To place on the predicted North American Datum 1983
move the projection lines 5 meters north and
15 meters east as shown by dashed corner ticks



CONTOUR INTERVAL 10 FEET IN THE UNITED STATES AND 50 FEET IN CANADA
DOTTED LINES REPRESENT 5-FOOT CONTOURS
NATIONAL GEODETIC VERTICAL DATUM OF 1929
DEPTH CURVES AND SOUNDINGS IN FEET—DATUM IS 1102 FEET

THIS MAP COMPLIES WITH NATIONAL MAP ACCURACY STANDARDS
FOR SALE BY U. S. GEOLOGICAL SURVEY, RESTON, VIRGINIA 22092
A FOLDER DESCRIBING TOPOGRAPHIC MAPS AND SYMBOLS IS AVAILABLE ON REQUEST

Revisions shown in purple compiled from aerial
photographs taken 1981 and other sources
This information not field checked. Map edited 1983



ROAD CLASSIFICATION

Primary highway, all weather, hard surface	Light duty road, all weather, improved surface
Secondary highway, all weather, hard surface	Unimproved road, fair or dry weather

U. S. Route State Route

RANIER, MINN.—ONT.
N4830-9315/7.5

1969
PHOTOREVISED 1983
DMA 7361 III SE-SERIES V872

A.H. ROBINSON
MAP LIBRARY
APR 06 1984

University of Wisconsin
Madison