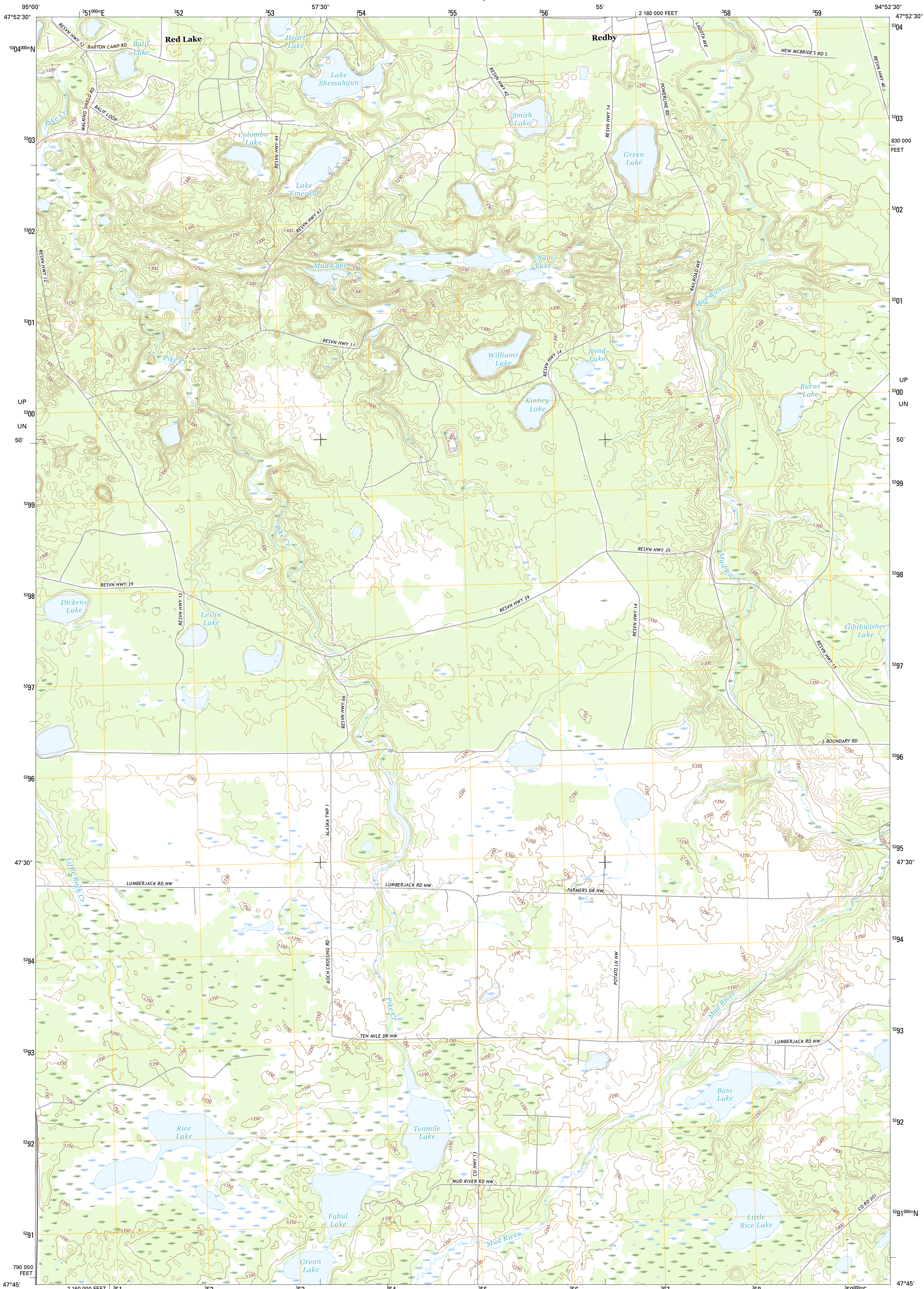




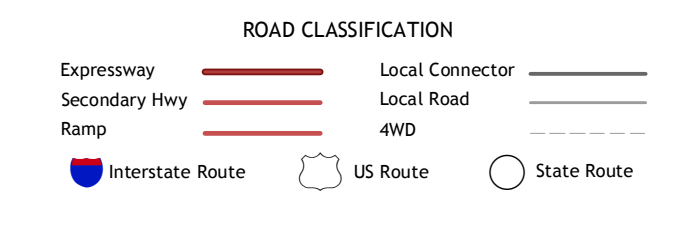
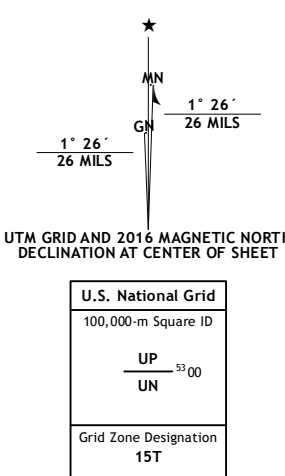
U.S. DEPARTMENT OF THE INTERIOR  
U.S. GEOLOGICAL SURVEY



REDBY QUADRANGLE  
MINNESOTA-BELTRAMI CO.  
7.5-MINUTE SERIES



Produced by the United States Geological Survey  
North American Datum of 1983 (NAD83)  
World Geodetic System of 1984 (WGS84). Projection and  
1 000-meter grid: Universal Transverse Mercator, Zone 15T  
10 000-foot ticks: Minnesota Coordinate System of 1983 (north  
zone)  
This map is not a legal document. Boundaries may be  
generalized for this map scale. Private lands within government  
reservations may not be shown. Obtain permission before  
entering private lands.  
Imagery.....NAIP, August 2013  
Roads.....U.S. Census Bureau, 2015 - 2016  
Names.....GNIS, 2016  
Hydrography.....National Hydrography Dataset,  
2013  
Contours.....National Elevation Dataset,  
2012  
Boundaries.....Multiple sources; see metadata file 1972 - 2016  
Public Land Survey System.....BLM, 2014  
Wetlands.....FWS National Wetlands Inventory 1977 - 2014



1	2	3	1 Red Lake OE N
2	3	4	2 Redby OE N
3	4	5	3 Redby NE
4	5	6	4 Red Lake
5	6	7	5 Nebish
6	7	8	6 Aure
7	8		7 Puposky Lake
8			8 White Fish Lake

ADJOINING QUADRANGLES

REDBY, MN  
2016

