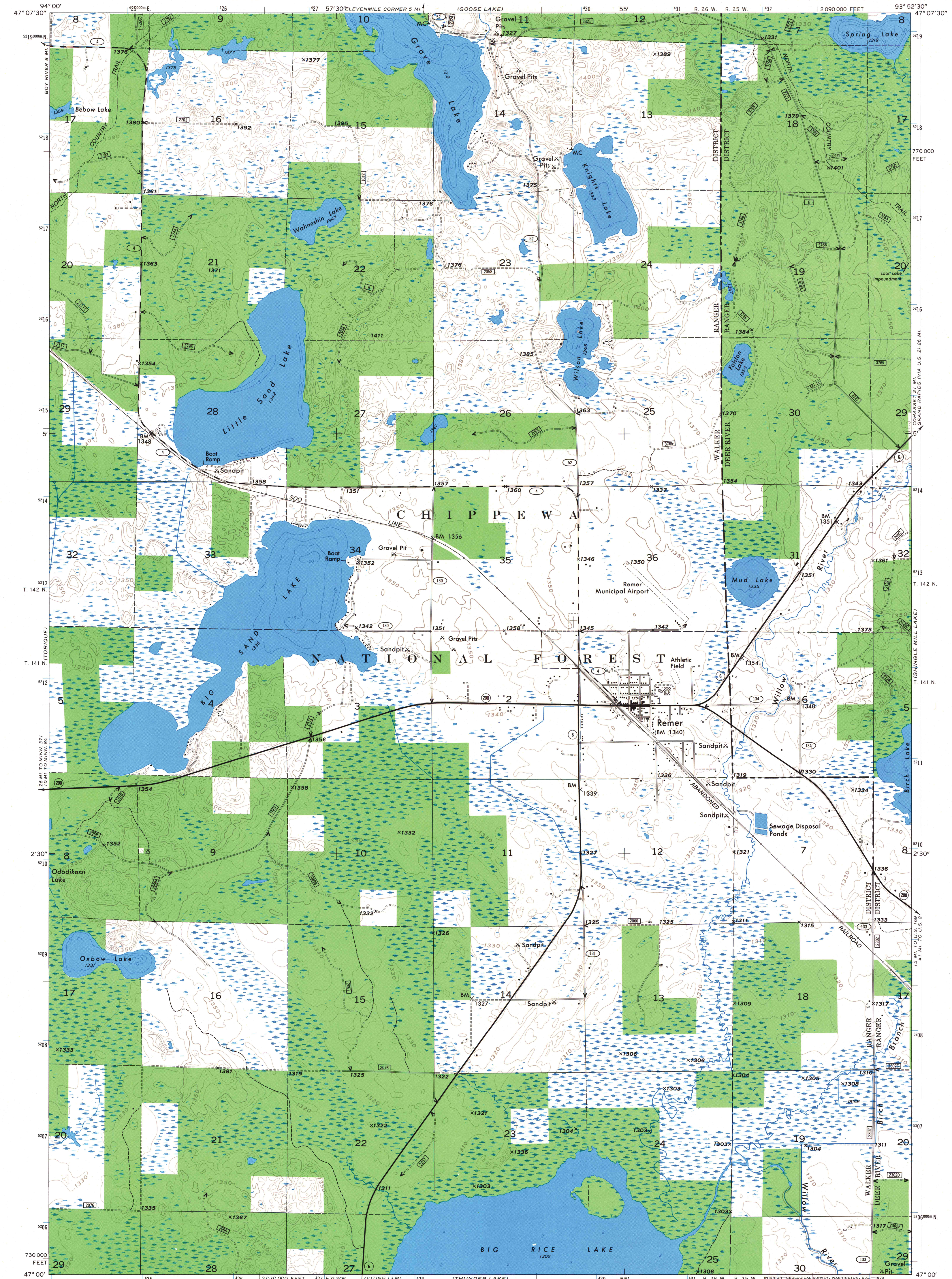
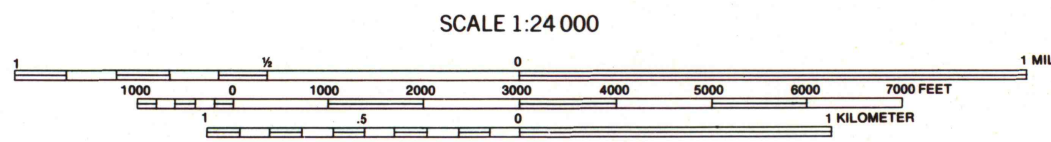
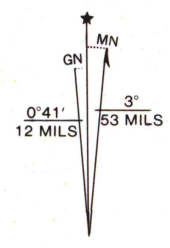


UNITED STATES
DEPARTMENT OF THE INTERIOR
GEOLOGICAL SURVEY
MODIFIED FOR USDA FOREST SERVICE USE

REMER QUADRANGLE
MINNESOTA—CASS CO.
7.5 MINUTE SERIES (TOPOGRAPHIC)

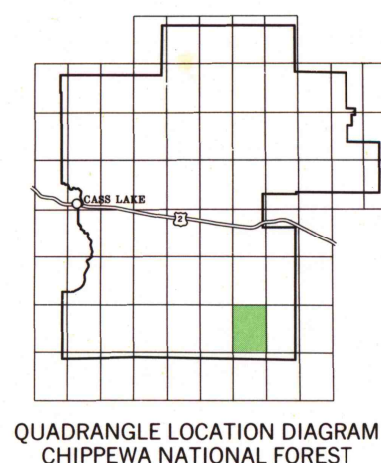


Base map prepared by the U.S. Geological Survey
Control by USGS and USC&GS
Topography by photogrammetric methods from aerial photographs taken 1968. Field checked 1971
Hydrography compiled from information furnished by Minnesota Department of Conservation
Polyconic projection. 1927 North American datum
10,000-foot grid based on Minnesota coordinate system, central zone
1000-meter Universal Transverse Mercator grid ticks, zone 15, shown in blue. 1927 North American datum
Modification to the USGS base map by the Geomatics Service Center from 1981, 1984, and 1985 aerial photography and 1987 correction guides furnished by the Eastern Region.



CONTOUR INTERVAL 10 FEET
DATUM IS MEAN SEA LEVEL

- LEGEND
- National Forest Boundary
 - National Forest Land as of 1987
 - TOWNSHIP AND SECTION LINE CLASSIFICATION
 - Surveyed, Location Reliable
 - Surveyed, Location Unreliable
 - Trail, Location Approximate
 - Primary Highway
 - Secondary Highway
 - Light Duty Road
 - Primitive Road
 - Trail
 - Road, Location Approximate
 - U.S. Highway
 - State Highway
 - County Highway
 - Forest Road
 - Forest Trail



Copies of this map are available for purchase at:
Forest Supervisor's Office
Cass Lake, Minn. 56633

REMER, MINN.
N4700—W9352.5/7.5

1971

DMA 7278 III SW—
U.S. GOVERNMENT PRINTING OFFICE: 1960-745-235

R10-23-90