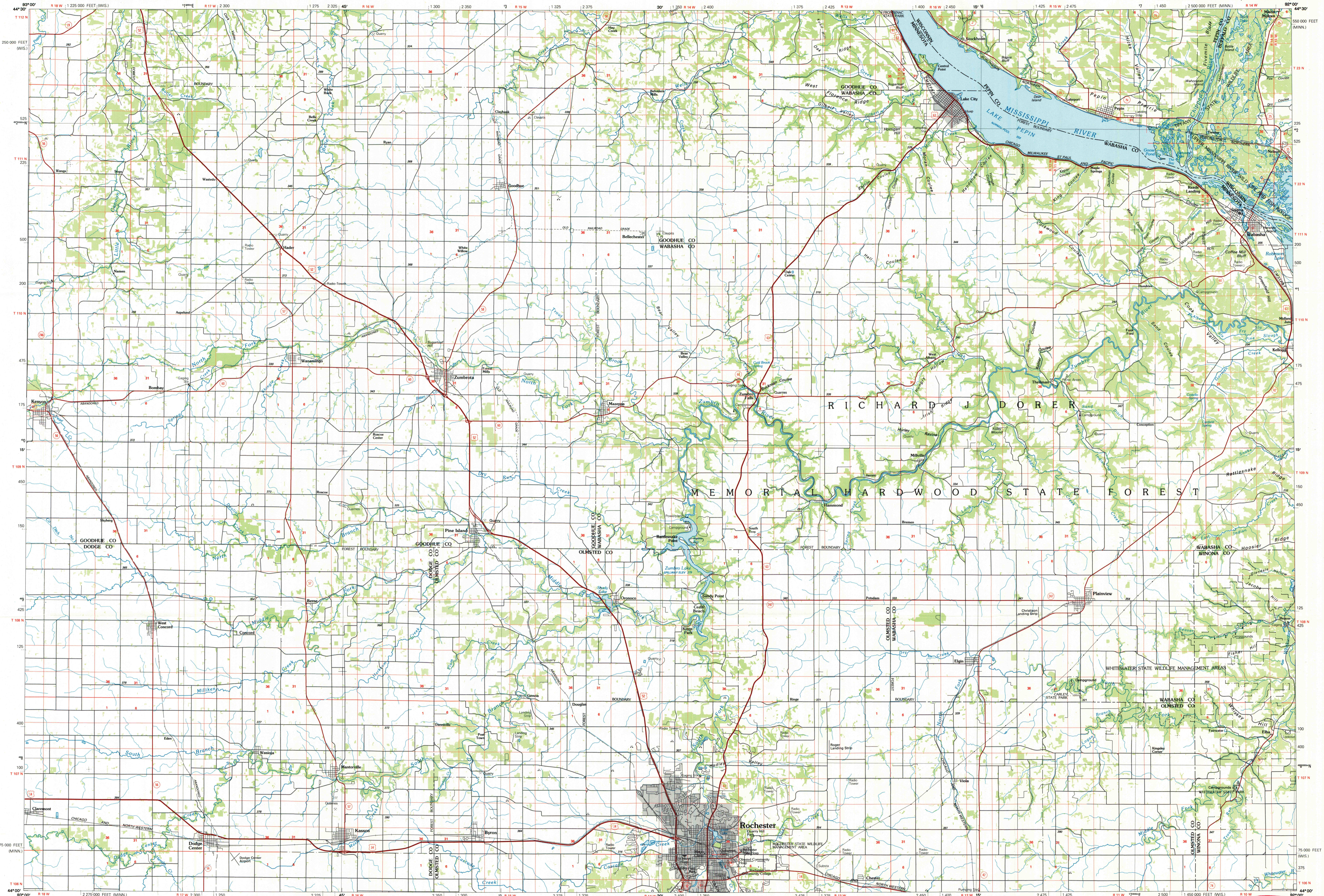


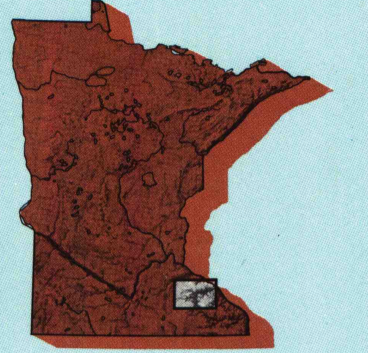
ROCHESTER, MINNESOTA-WISCONSIN

30 X 60 MINUTE SERIES (PLANIMETRIC)



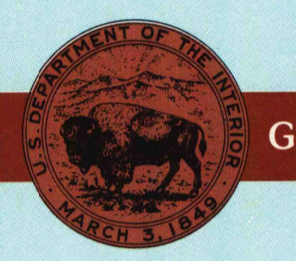
Rochester MINNESOTA-WISCONSIN

1:100 000-scale planimetric map



30 X 60 MINUTE QUADRANGLE SHOWING

- Elevations in meters
- Highways, roads and other manmade structures
- Water features
- Woodland areas
- Geographic names



GEOLOGICAL SURVEY

1985

Produced by the United States Geological Survey  
 Compiled from USGS 1:24 000-scale topographic maps dated 1965-1982. Planimetry revised from aerial photographs taken 1980-81 and other source data. Revised information not field checked. Map edited 1985.  
 Projection and 10 000-meter grid, zone 15. Universal Transverse Mercator  
 25 000-foot grid ticks based on Minnesota and Wisconsin coordinate systems, south and central zones  
 1927 North American Datum  
 To place on the predicted North American Datum 1983, move the projection lines 7 meters north and 15 meters east  
 There may be private inholdings within the boundaries of the National or State reservations shown on this map

NATIONAL GEODETIC VERTICAL DATUM OF 1929

ELEVATIONS SHOWN TO THE NEAREST METER

THIS MAP COMPLIES WITH NATIONAL MAP ACCURACY STANDARDS

CONVERSION TABLE		DECLINATION DIAGRAM		ADJOINING MAPS		
Meters	Feet	1	2	3	4	5
1	3.2808	1	2	3	4	5
2	6.5617	6	7	8	9	10
3	9.8425					
4	13.1234					
5	16.4042					
6	19.6850					
7	22.9659					
8	26.2467					
9	29.5275					
10	32.8084					

To convert meters to feet multiply by 3.2808  
 To convert feet to meters multiply by 0.3048

UTM grid convergence (GNI and 1983 magnetic declination 1970) at center of map  
 Diagram is approximate

1	2	3
4	5	6
7	8	9
10	11	12

1 Saint Paul  
 2 Hastings  
 3 Eau Claire  
 4 Faribault  
 5 Winona  
 6 Albert Lea  
 7 Austin  
 8 La Crosse

FOR SALE BY U.S. GEOLOGICAL SURVEY RESTON, VIRGINIA 22092

Topographic Map Symbols

- Primary highway, hard surface
- Secondary highway, hard surface
- Light duty road, principal street, hard or improved surface
- Other road or street, trail
- Route marker: interstate, U.S., State
- Railroad: standard gage; narrow gage
- Bridge: overpass; underpass
- Tunnel: road, railroad
- Built up area; locality; elevation
- Airport: landing field; landing strip
- National boundary
- State boundary
- County boundary
- National or State reservation boundary
- Land grant boundary
- U.S. public lands survey: range, township, section
- Range, township, section line: protracted
- Power transmission line: pipeline
- Dam; dam with lock
- Cemetery; building
- Windmill; water well; spring
- Mine shaft; adit or cave; mine, quarry; gravel pit
- Campground; picnic area; U.S. location monument
- Ruin; cliff dwelling
- Distorted surface: strip mine, lava, sand
- Contour: index; intermediate; supplementary
- Bathymetric contour: index; intermediate
- Stream, lake: perennial; intermittent
- Rapids, large and small; falls, large and small
- Area to be submerged; marsh, swamp
- Land subject to controlled inundation; woodland
- Scrub; mangrove
- Orchard; vineyard

A pamphlet describing topographic maps is available on request

NON-CIRCULATING JAN 16 1987

XB006-9/10 copy 3

SCALE 1:100 000



ROCHESTER, MINNESOTA-WISCONSIN ARTHUR H. ROBINSON MAP LIBRARY 492-A1-PL-100 University of Wisconsin-Madison

1985