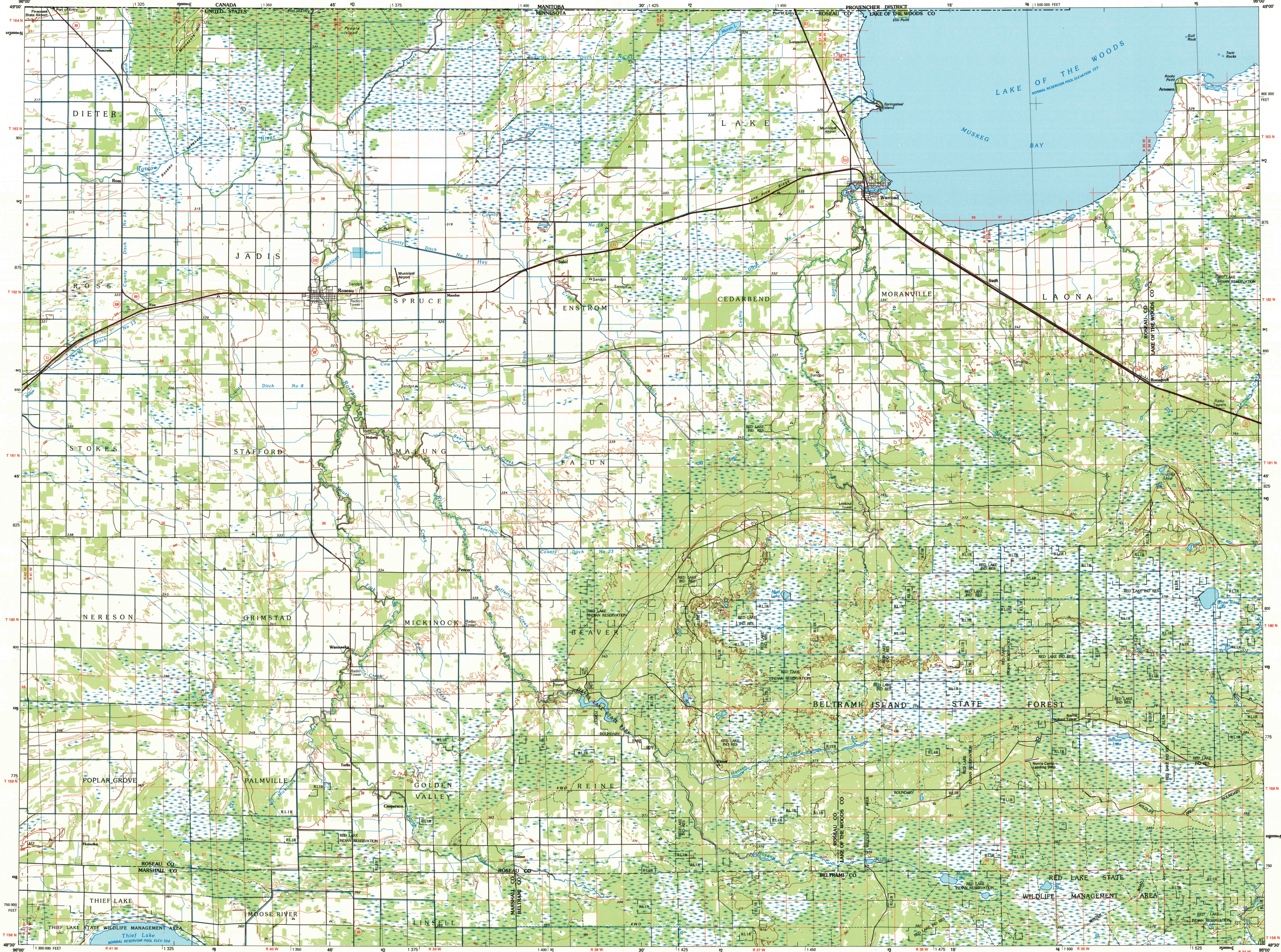
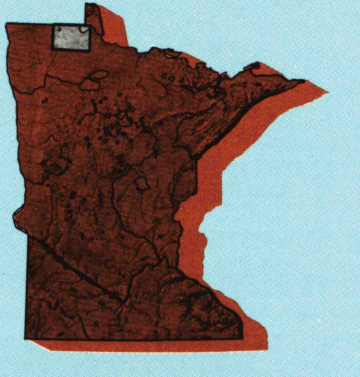


ROSEAU, MINNESOTA-MANITOBA



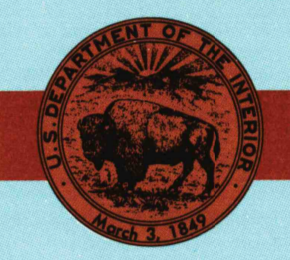
Roseau MINNESOTA-MANITOBA

1:100 000-scale metric topographic map



30 X 60 MINUTE QUADRANGLE SHOWING

- Contours and elevations in meters
- Highways, roads and other manmade structures
- Water features
- Woodland areas
- Geographic names



U. S. GEOLOGICAL SURVEY

1976/94 PHOTOINSPECTED 1991

Produced by the United States Geological Survey  
 Compiled from USGS 1:24 000-scale topographic maps dated 1966-1969. Planimetry revised from aerial photographs taken 1974 and other source data. Revised information not field checked. Map edited 1976  
 1927 North American Datum (NAD 27). Projection and 10 000-meter grid: Universal Transverse Mercator, zone 15 25 000-foot ticks; Minnesota coordinate system, north zone  
 The difference between NAD 27 and North American Datum of 1983 (NAD 83) is too small to show at this scale. The values of the shift between the datums for 7.5-minute intersections are given in USGS Bulletin 1875  
 There may be private inholdings within the boundaries of the National or State reservations shown on this map  
 Map photoinspected using 1991 photographs  
 No major culture or drainage changes found

CONTOUR INTERVAL 5 METERS  
 NATIONAL GEODETIC VERTICAL DATUM OF 1929  
 ELEVATIONS SHOWN TO THE NEAREST METER

THIS MAP COMPLIES WITH NATIONAL MAP ACCURACY STANDARDS

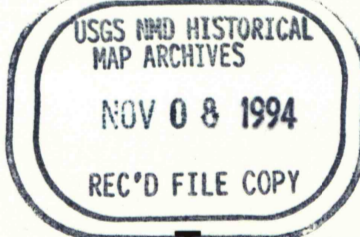
CONVERSION TABLE		DECLINATION DIAGRAM		ADJOINING MAPS		
Meters	Feet	1° 15'	0° 15'	1	2	3
1	3.2808			4	5	6
2	6.5617			7	8	
3	9.8425					
4	13.1234					
5	16.4042					
6	19.6850					
7	22.9659					
8	26.2467					
9	29.5275					
10	32.8084					

To convert meters to feet multiply by 3.2808  
 To convert feet to meters multiply by 0.3048

UTM grid convergence (GM) and true magnetic declination (MD) at center of map. Diagram is approximate.

1 Angle Inlet  
 2 Oak Island  
 3 Haddock  
 4 Baudette  
 5 Three River Falls  
 7 Crook  
 8 Upper Red Lake

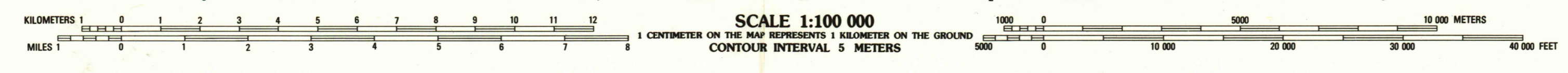
FOR SALE BY U.S. GEOLOGICAL SURVEY  
 DENVER, COLORADO 80225, OR RESTON, VIRGINIA 22092



Topographic Map Symbols

- Primary highway, hard surface
- Secondary highway, hard surface
- Light duty road, principal street, hard or improved surface
- Other road or street, trail
- Route marker: Interstate, U.S. State
- Railroad: standard gage, narrow gage
- Bridge: overpass, underpass
- Tunnel: road, railroad
- Bath up area, locality, elevation
- Airport, landing field, landing strip
- National boundary
- State boundary
- County boundary
- Civil township boundary
- National or State reservation boundary
- Land grant boundary
- U.S. public lands survey: range, township, section
- Range, township, section line: protected
- Power transmission line, pipeline
- Dam; dam with lock
- Cemetery, building
- Wellhead, water well, spring
- Mine shaft; adit or cave; mine, quarry, gravel pit
- Campground; picnic area; U.S. location monument
- Ruin; cliff dwelling
- Distorted surface: strip mine, lava, sand
- Contours: index, intermediate, supplementary
- Bathymetric contours: index, intermediate
- Stream: lake, perennial, intermittent
- Rapids, large and small; falls, large and small
- Area to be submerged; marsh, swamp
- Land subject to controlled inundation; woodland
- Scrub; mangrove
- Orchard; vineyard

A pamphlet describing topographic maps is available on request



ROSEAU, MINNESOTA-MANITOBA 48095-E1-TM-100

1976 PHOTOINSPECTED 1991

• INTERIOR - GEOLOGICAL SURVEY, RESTON, VIRGINIA - 1984