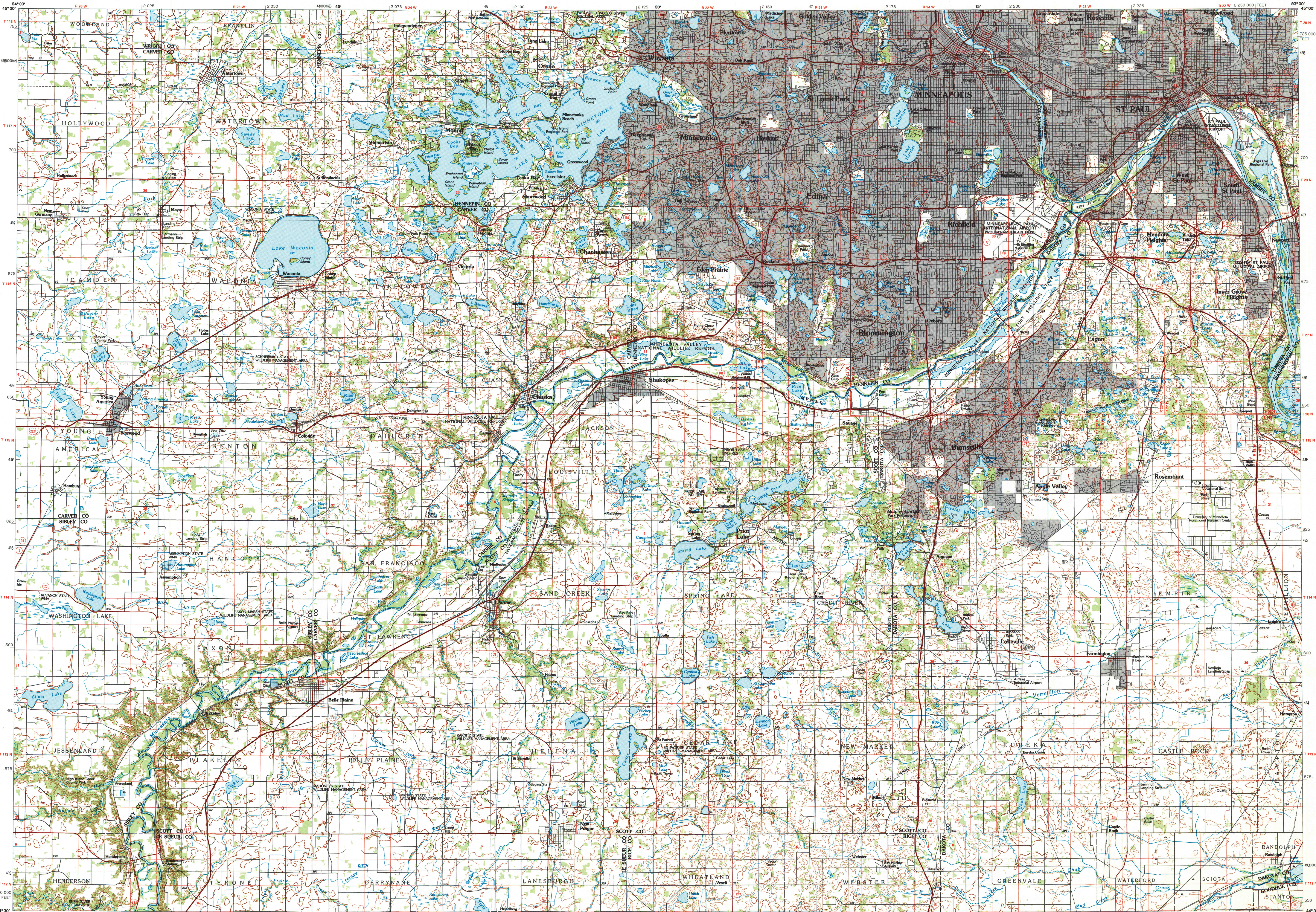


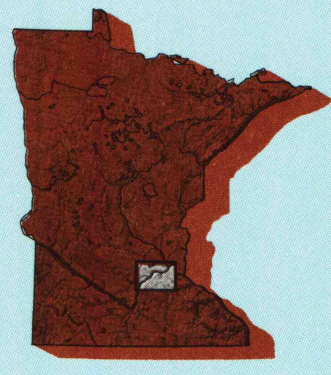
SAINT PAUL, MINNESOTA

30 X 60 MINUTE SERIES (TOPOGRAPHIC)



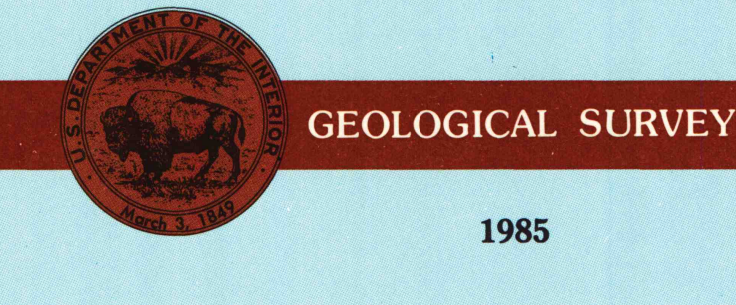
Saint Paul MINNESOTA

1:100 000-scale metric topographic map



30 X 60 MINUTE QUADRANGLE SHOWING

- Contours and elevations in meters
- Highways, roads and other manmade structures
- Water features
- Woodland areas
- Geographic names



Produced by the United States Geological Survey
 Compiled from USGS 1:24 000-scale topographic maps dated 1968-1981. Planimetry revised from aerial photographs taken 1984 and other source data. Revised information not field checked. Map edited 1985.
 Projection and 10 000-meter grid, zone 15. Universal Transverse Mercator
 25 000-foot grid ticks based on Minnesota coordinate system, south zone
 1927 North American Datum
 To place on the predicted North American Datum 1983, move the projection lines 7 meters north and 18 meters east.
 There may be private inholdings within the boundaries of the National or State reservations shown on this map.

CONTOUR INTERVAL 10 METERS
 NATIONAL GEODETIC VERTICAL DATUM OF 1929
 ELEVATIONS SHOWN TO THE NEAREST METER

THIS MAP COMPLIES WITH NATIONAL MAP ACCURACY STANDARDS

CONVERSION TABLE		DECLINATION DIAGRAM		ADJOINING MAPS		
Meters	Feet	MAGNETIC DECLINATION		1	2	3
1	3.2808	MAGNETIC DECLINATION		4	5	
2	6.5617	MAGNETIC DECLINATION		6	7	8
3	9.8425	MAGNETIC DECLINATION				
4	13.1234	MAGNETIC DECLINATION				
5	16.4042	MAGNETIC DECLINATION				
6	19.6850	MAGNETIC DECLINATION				
7	22.9659	MAGNETIC DECLINATION				
8	26.2467	MAGNETIC DECLINATION				
9	29.5276	MAGNETIC DECLINATION				
10	32.8084	MAGNETIC DECLINATION				

To convert meters to feet multiply by 3.2808
 To convert feet to meters multiply by 0.3048

UTM grid convergence (GN and 1983 magnetic declination) at center of map
 Diagram is approximate

1 Litchfield
 2 Andak
 3 Stillwater
 4 Glenocoe
 5 Hastings
 6 New Ulm
 7 Fairbault
 8 Rochester

FOR SALE BY U.S. GEOLOGICAL SURVEY
 DENVER, COLORADO 80225, OR RESTON, VIRGINIA 22092

Topographic Map Symbols

- Primary highway, hard surface
- Secondary highway, hard surface
- Light duty road, principal street, hard or improved surface
- Other road or street; trail
- Route marker: Interstate; U.S.; State
- Railroad: standard gage; narrow gage
- Bridge: overpass; underpass
- Tunnel: road; railroad
- Built up area; locality; elevation
- Airport: landing field; landing strip
- National boundary
- State boundary
- County boundary
- National or State reservation boundary
- Land grant boundary
- U.S. public lands survey: range, township, section
- Range, township, section line: protracted
- Power transmission line; pipeline
- Dam: dam with lock
- Cemetery; building
- Well; water; spring
- Mine shaft; adit or cave; mine, quarry; gravel pit
- Campground; picnic area; U.S. location monument
- Ruin; cliff dwelling
- Disturbed surface: strip mine, lava, sand
- Contours: index; intermediate; supplementary
- Bathymetric contours: index; intermediate
- Stream, lake: perennial; intermittent
- Rapids, large and small; falls, large and small
- Area to be submerged; marsh, swamp
- Land subject to controlled inundation; woodland
- Scrub; mangrove
- Orchard; vineyard

U.S. Regional
 Department of
 the Interior
 GEOLOGICAL SURVEY
 DO NOT DISCARD

ARTHUR H. ROBINSON MAP LIBRARY
 University of Wisconsin-Madison

3006 96.00
 SET