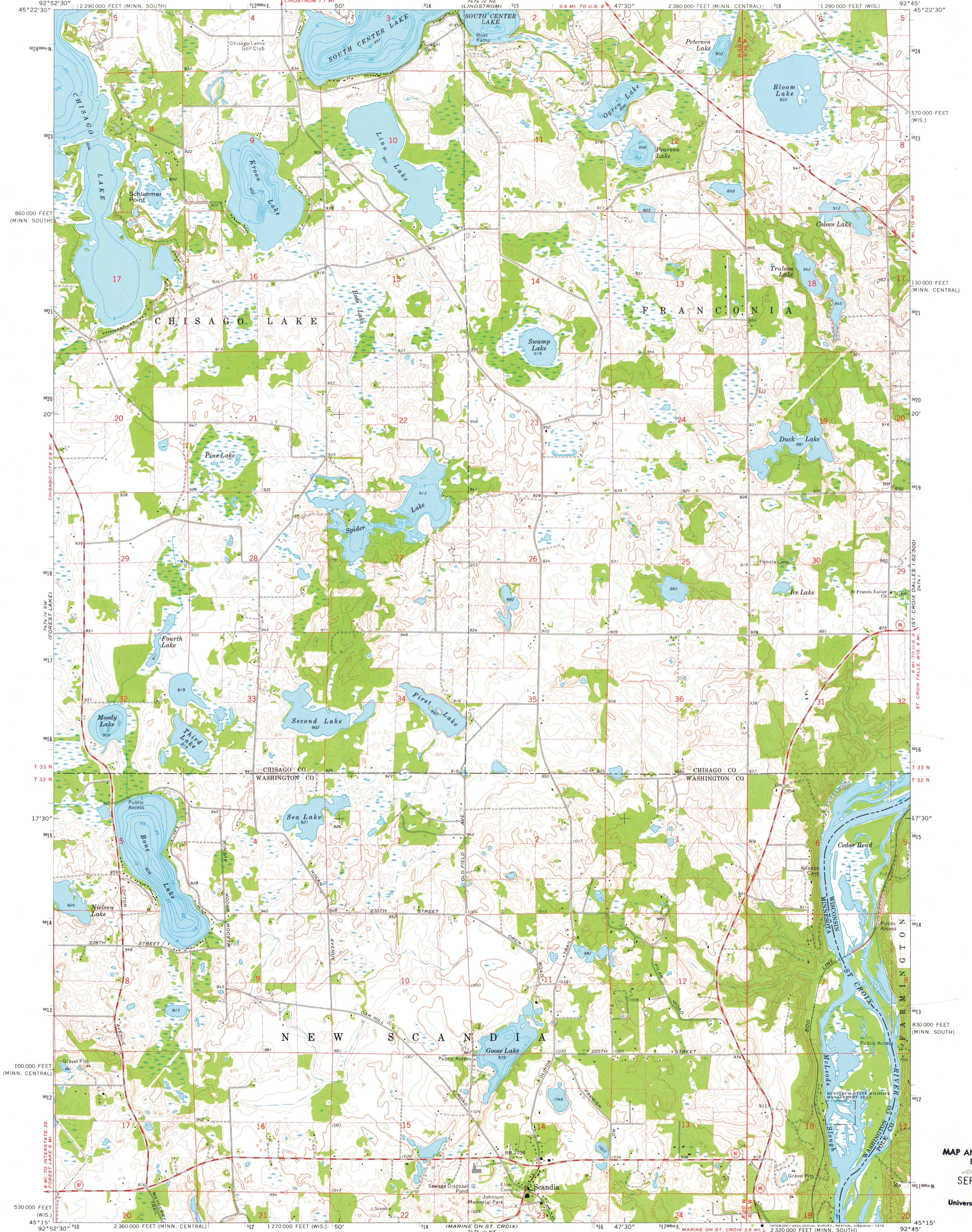
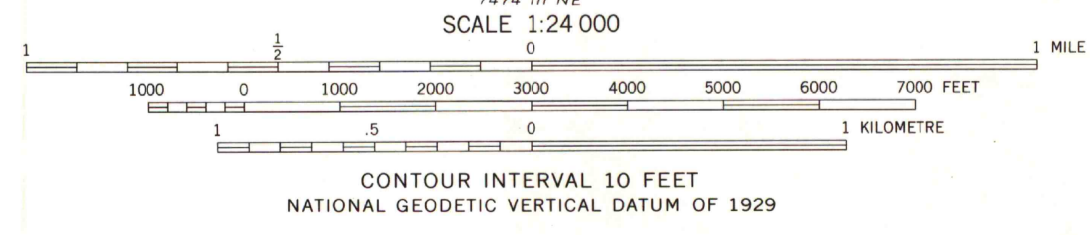
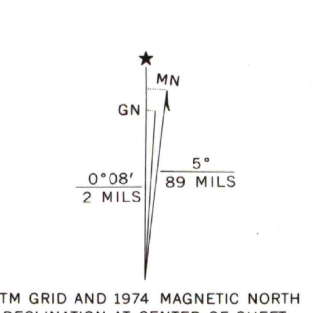


1:250,000
1:62,500
1:25,000
1:12,500
1:6,250
1:3,125



Mapped, edited, and published by the Geological Survey
Control by USGS and NOS/NOAA
Topography by photogrammetric methods from aerial photographs taken 1973. Field checked 1974
Hydrography compiled from information furnished by Minnesota Department of Natural Resources
Projection: Minnesota coordinate system, central zone (Lambert conformal conic)
10,000-foot grid ticks based on Minnesota coordinate system, central and south zones and Wisconsin coordinate system central zone
1000-metre Universal Transverse Mercator grid ticks, zone 15, shown in blue. 1927 North American datum
Fine red dashed lines indicate selected fence and field lines where generally visible on aerial photographs
This information is unchecked



ROAD CLASSIFICATION

Primary highway, hard surface	Light-duty road, hard or improved surface
Secondary highway, hard surface	Unimproved road
Interstate Route	U.S. Route
	State Route

THIS MAP COMPLIES WITH NATIONAL MAP ACCURACY STANDARDS FOR SALE BY U.S. GEOLOGICAL SURVEY, RESTON, VIRGINIA 22092 AND WISCONSIN GEOLOGICAL AND NATURAL HISTORY SURVEY, MADISON, WISCONSIN 53706
A FOLDER DESCRIBING TOPOGRAPHIC MAPS AND SYMBOLS IS AVAILABLE ON REQUEST



SCANDIA, MINN.-WIS.
SE/4 FOREST LAKE 15' QUADRANGLE
N4515-W9245/7.5
1974
AMS 7474 IV SE-SERIES V872

MAP AND AIR PHOTO LIBRARY
SEP 13 1978

University of Wisconsin
Madison

1974
copy
MNI