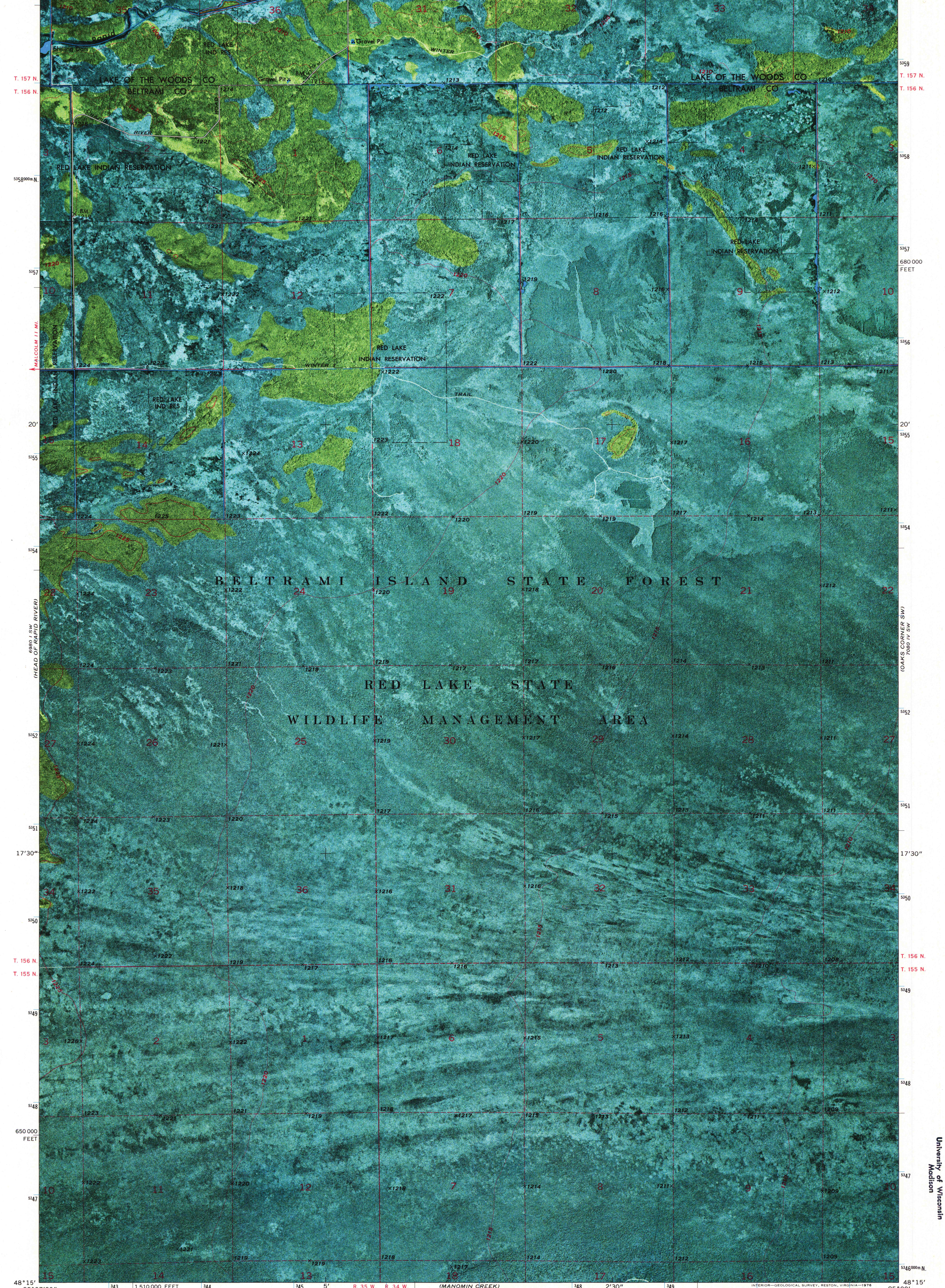
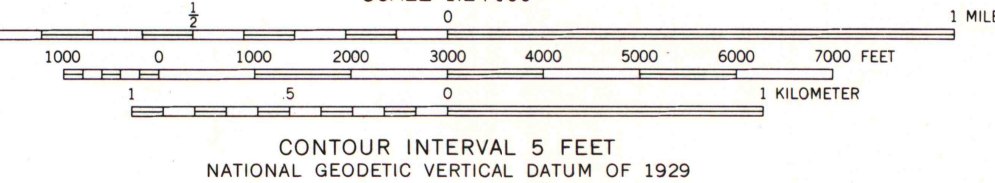
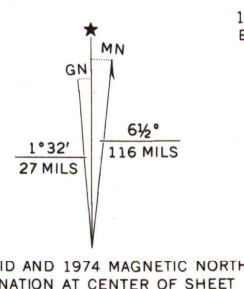


95°07'30" 95°00' 48°22'30" 1:530 000 FEET 95°00' 48°22'30"



Mapped, edited, and published by the Geological Survey
Control by USGS and USC&GS
Orthophotomap prepared from high-altitude aerial photograph taken May 22, 1969. Topography by photogrammetric methods from aerial photographs taken 1973. Field checked 1974
Projection and 10,000-foot grid ticks: Minnesota coordinate system, north zone (Lambert conformal conic)
1000-meter Universal Transverse Mercator grid ticks, zone 15, shown in blue. 1927 North American datum



ROAD CLASSIFICATION

Primary highway, hard surface	Light-duty road, hard or improved surface
Secondary highway, hard surface	Unimproved road
Interstate Route	U. S. Route
	State Route

SHILLING DAM, MINN.
N4815—W9500/7.5
1974
AMS 6980 I SE—SERIES V8720

THIS MAP COMPLIES WITH NATIONAL MAP ACCURACY STANDARDS
FOR SALE BY U. S. GEOLOGICAL SURVEY, RESTON, VIRGINIA 22092
A FOLDER DESCRIBING TOPOGRAPHIC MAPS AND SYMBOLS IS AVAILABLE ON REQUEST

MAP AND AIR PHOTO
LIBRARY
AUG 3 1976
University of Wisconsin
Madison