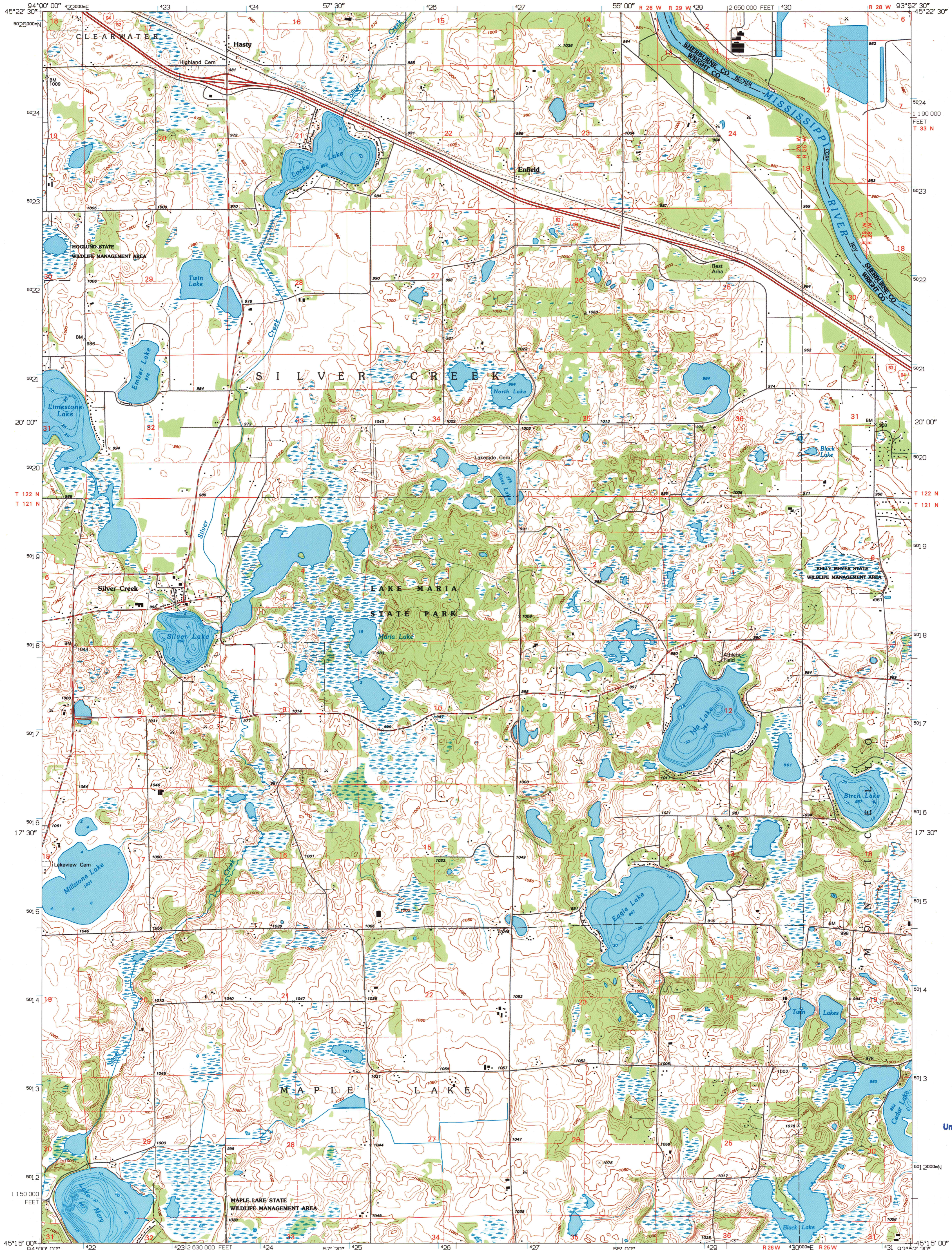
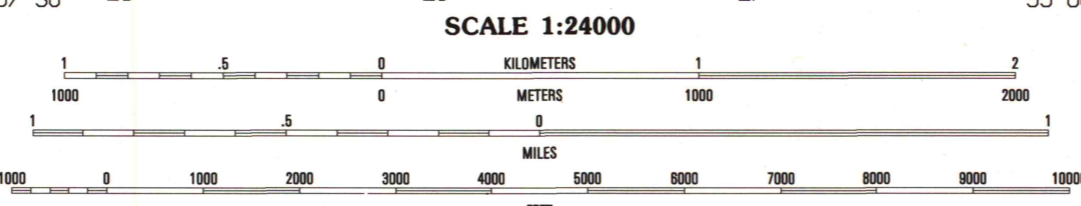
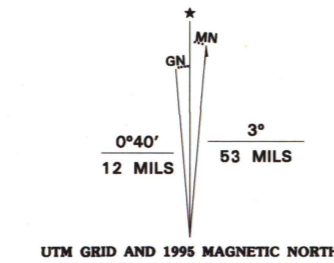


UNITED STATES
DEPARTMENT OF THE INTERIOR
GEOLOGICAL SURVEY

SILVER CREEK QUADRANGLE
MINNESOTA
7.5 MINUTE SERIES (TOPOGRAPHIC)



Produced by the United States Geological Survey
Compiled by photogrammetric methods from imagery dated 1958
Field checked 1961. Revised in cooperation with State of Minnesota agencies from imagery dated 1991. PLSS and survey control current as of 1961. Map edited 1995
Contours not revised. Contours that conflict with revised planimetry are dashed
Hydrography compiled from information furnished by Minnesota Department of Natural Resources
North American Datum of 1983 (NAD 83). Projection and blue 1000-meter ticks. Universal Transverse Mercator, zone 15
10 000-foot ticks; Minnesota Coordinate System of 1983 (south zone)
North American Datum of 1927 (NAD 27) is shown by dashed corner ticks. The values of the shift between NAD 83 and NAD 27 for 7.5-minute intersections are obtainable from National Geodetic Survey NADCON software
There may be private inholdings within the boundaries of the National or State reservations shown on this map



SCALE 1:24000
CONTOUR INTERVAL 10 FEET
SUPPLEMENTARY CONTOUR INTERVAL 5 FEET
NATIONAL GEODETIC VERTICAL DATUM OF 1929

THIS MAP COMPLIES WITH NATIONAL MAP ACCURACY STANDARDS
FOR SALE BY U.S. GEOLOGICAL SURVEY
DENVER, COLORADO 80225, OR RESTON, VIRGINIA 22092
A FOLDER DESCRIBING TOPOGRAPHIC MAPS AND SYMBOLS IS AVAILABLE ON REQUEST



QUADRANGLE LOCATION

1	2	3	1 Clearwater
4	5	6	2 Clear Lake
6	7	8	3 Becker
			4 Annandale
			5 Monticello
			6 Alban Center
			7 Buffalo West
			8 Buffalo East

ADJOINING 7.5' QUADRANGLE NAMES

INTERIOR - GEOLOGICAL SURVEY, RESTON, VIRGINIA - 1986
ROAD CLASSIFICATION
Primary highway hard surface
Secondary highway hard surface
Light-duty road, hard or improved surface
Unimproved road
Interstate Route U.S. Route State Route

SILVER CREEK, MN
45093-C8-TF-024
1991 E1995
DMA 7274 IV SW-SERIES V-872

U.S. Regional
Depository Copy
DO NOT DISCARD

A.H. ROBINSON
MAP LIBRARY
FEB 08 1996
University of Wisconsin
Madison

