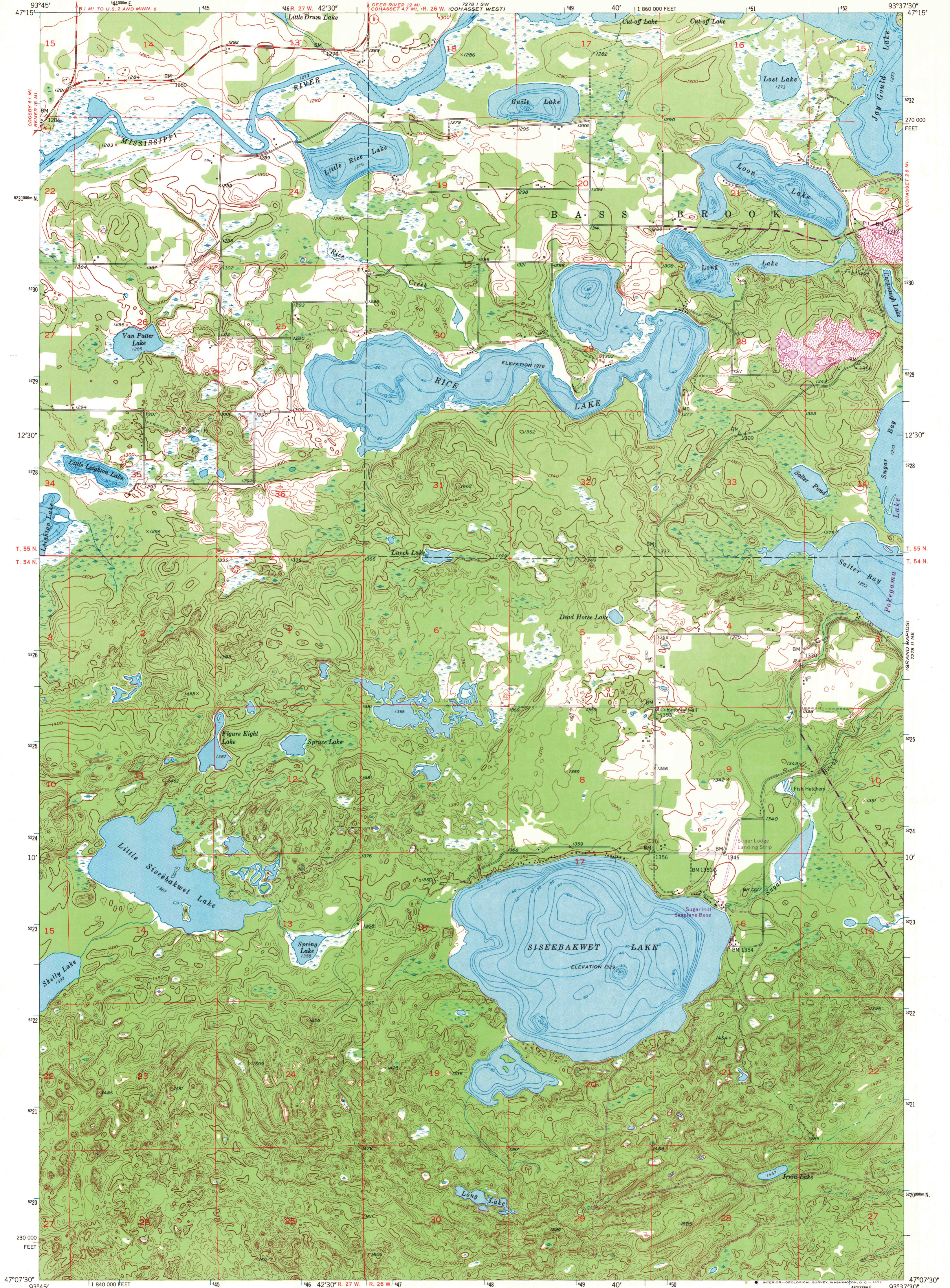
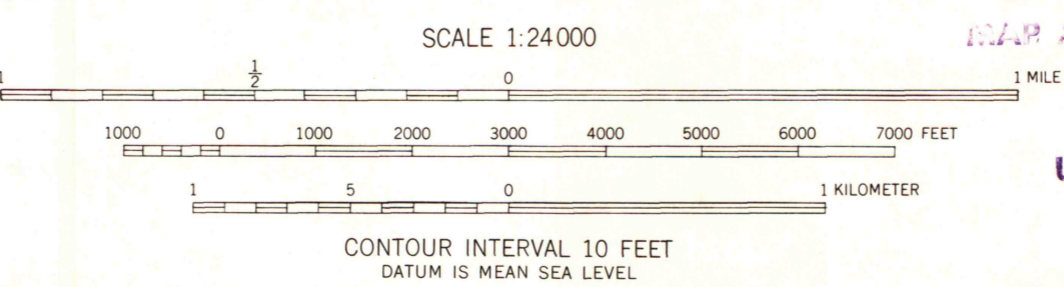
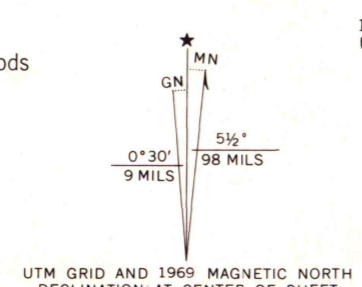


7278 15
(COMASSET EAST)

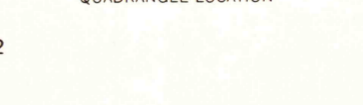


Mapped, edited, and published by the Geological Survey
Control by USGS and USC&GS
Topography from aerial photographs by photogrammetric methods
Aerial photographs taken 1951. Field check 1953
Polyconic projection. 1927 North American datum
10,000-foot grid based on Minnesota coordinate system,
north zone
1000-meter Universal Transverse Mercator grid ticks,
zone 15, shown in blue
Depth curves compiled from charts furnished by
Minnesota Department of Conservation
Revisions shown in purple compiled from aerial photographs
taken 1969. This information not field checked



ROAD CLASSIFICATION

Heavy-duty	4 LANE 6 LANE	Light-duty	2 LANE 4 LANE
Medium-duty	2 LANE 4 LANE	Unimproved dirt	=====
U. S. Route	—○—	State Route	○



QUADRANGLE LOCATION
SISEEBAKWET LAKE, MINN.
N4707.5-W9337.5/7.5
1953
PHOTOREVISED 1969
AMS 7278 11 NW-SERIES V872

THIS MAP COMPLIES WITH NATIONAL MAP ACCURACY STANDARDS
FOR SALE BY U.S. GEOLOGICAL SURVEY, DENVER, COLORADO 80225, OR WASHINGTON, D. C. 20242
A FOLDER DESCRIBING TOPOGRAPHIC MAPS AND SYMBOLS IS AVAILABLE ON REQUEST