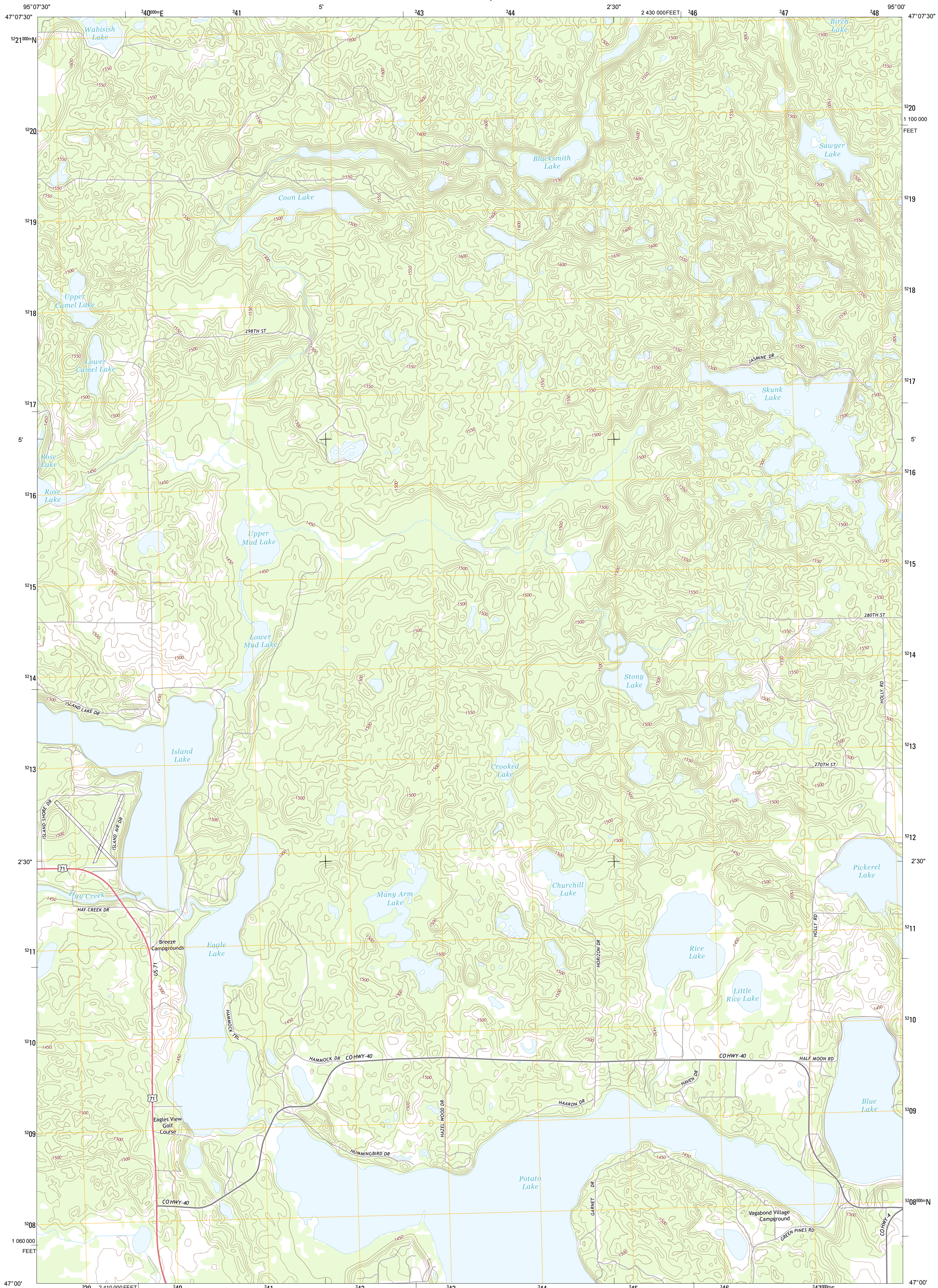




U.S. DEPARTMENT OF THE INTERIOR
U. S. GEOLOGICAL SURVEY

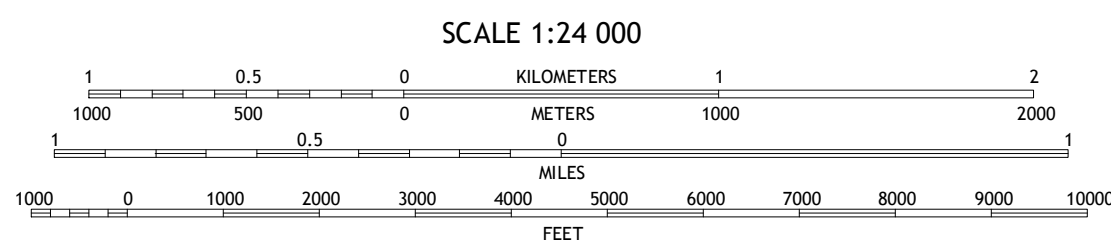
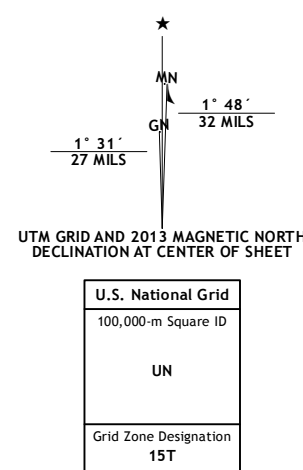


SKUNK LAKE QUADRANGLE
MINNESOTA-HUBBARD CO.
7.5-MINUTE SERIES



Produced by the United States Geological Survey
North American Datum of 1983 (NAD83)
World Geodetic System of 1984 (WGS84). Projection and
1 000-meter grid: Universal Transverse Mercator, Zone 15T
10 000-foot ticks: Minnesota Coordinate System of 1983 (central
zone)

Imagery.....NAIP, June 2010 - July 2010
Roads.....©2006-2012 TomTom
Names.....GNIS, 2013
Hydrography.....National Hydrography Dataset, 2010
Contours.....National Elevation Dataset, 1999
Boundaries.....Census, IBWC, IBC, USGS, 1972 - 2012



CONTOUR INTERVAL 10 FEET
NORTH AMERICAN VERTICAL DATUM OF 1988

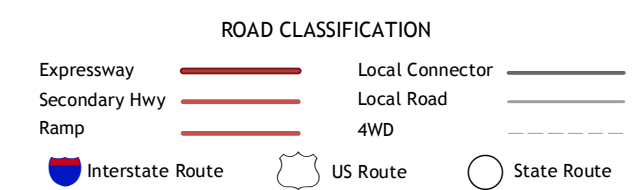
This map was produced to conform with the
National Geospatial Program US Topo Product Standard, 2011.
A metadata file associated with this product is draft version 0.6.11



QUADRANGLE LOCATION

Lake Itasca	Schoolcraft Lake	Lake George
Two Inlets	Skunk Lake	Mantrap Lake
Park Rapids NW	Park Rapids	Dorset

ADJOINING 7.5 QUADRANGLES



SKUNK LAKE, MN
2013