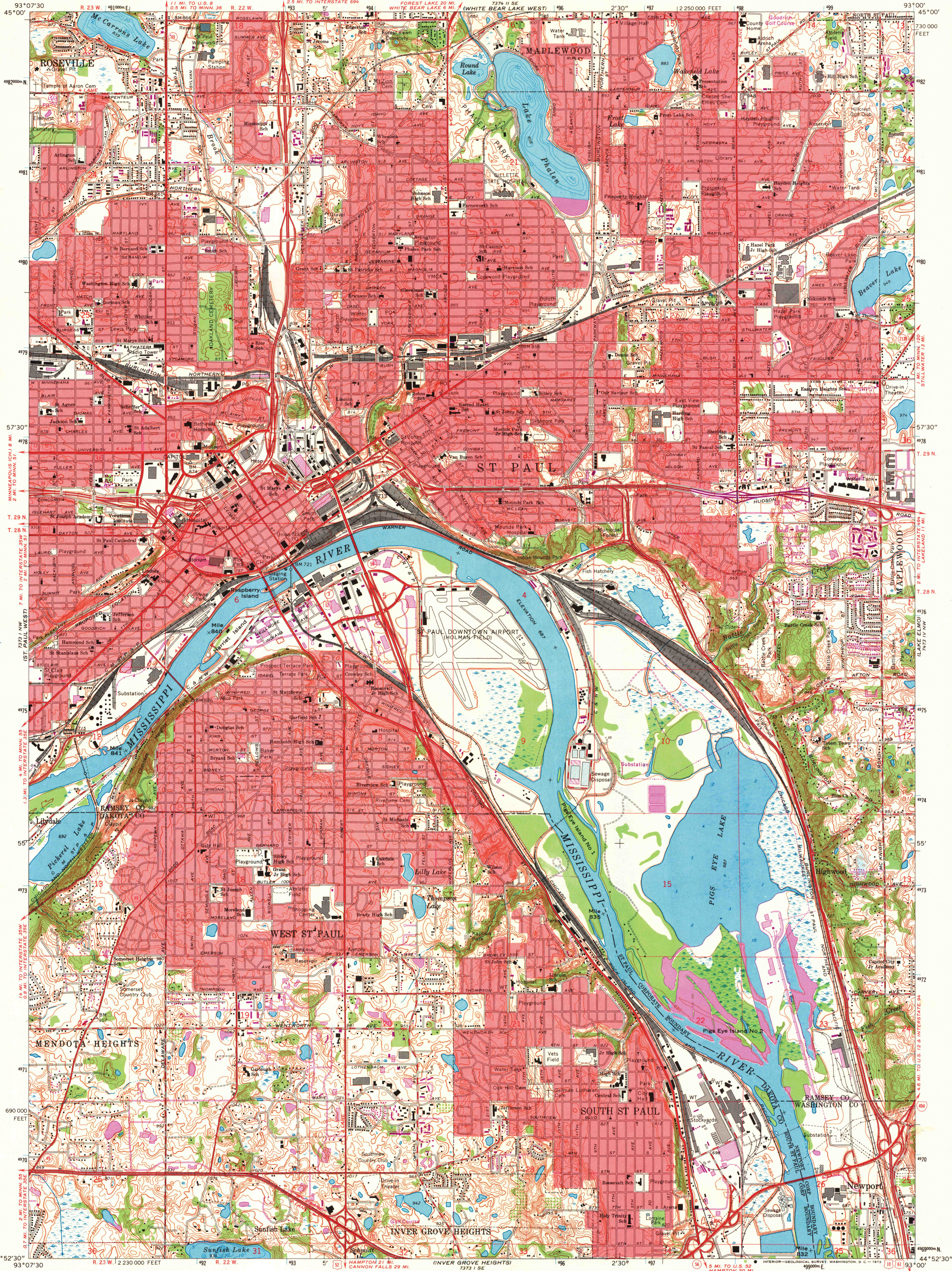
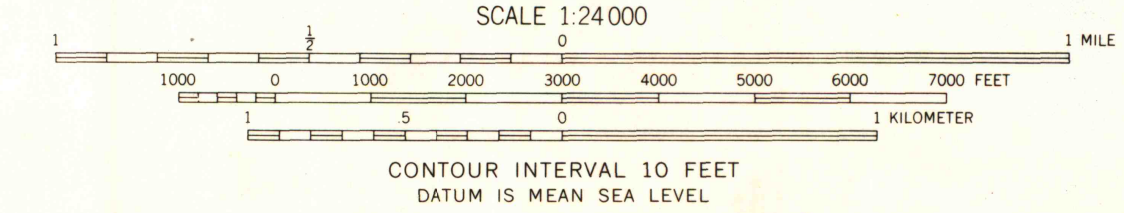
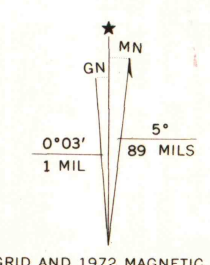


UNITED STATES  
DEPARTMENT OF THE INTERIOR  
GEOLOGICAL SURVEY

ST. PAUL EAST QUADRANGLE  
MINNESOTA  
7.5 MINUTE SERIES (TOPOGRAPHIC)  
NE/4 ST. PAUL 15' QUADRANGLE



Mapped, edited, and published by the Geological Survey  
Control by USGS, USC&GS, and USCE  
Topography by photogrammetric methods from aerial photographs taken 1947. Field checked 1951. Revised from aerial photographs taken 1966. Field checked 1967  
Hydrography compiled from information furnished by Minnesota Department of Conservation  
Polyconic projection. 1927 North American datum  
10,000-foot grid based on Minnesota coordinate system, south zone 1000-meter Universal Transverse Mercator grid ticks, zone 15, shown in blue  
Red tint indicates areas in which only landmark buildings are shown  
Fine red dashed lines indicate selected fence and field lines where generally visible on aerial photographs. This information is unchecked



ROAD CLASSIFICATION

Heavy-duty	Light-duty
Medium-duty	Unimproved dirt
Interstate Route	U.S. Route
	State Route



THIS MAP COMPLIES WITH NATIONAL MAP ACCURACY STANDARDS  
FOR SALE BY U.S. GEOLOGICAL SURVEY, DENVER, COLORADO 80225, OR WASHINGTON, D.C. 20422  
A FOLDER DESCRIBING TOPOGRAPHIC MAPS AND SYMBOLS IS AVAILABLE ON REQUEST

Revisions shown in purple compiled from aerial photographs taken 1972. This information not field checked  
Purple tint indicates extension of urban areas

ST. PAUL EAST, MINN.  
NE/4 ST. PAUL 15' QUADRANGLE  
N4452.5-W9300/7.5  
1967  
PHOTOREPRODUCED  
AMS 7373 1 NE-SERIES V872

MAP AND AIR PHOTO  
LIBRARY  
NOV 1 1973  
University of Wisconsin