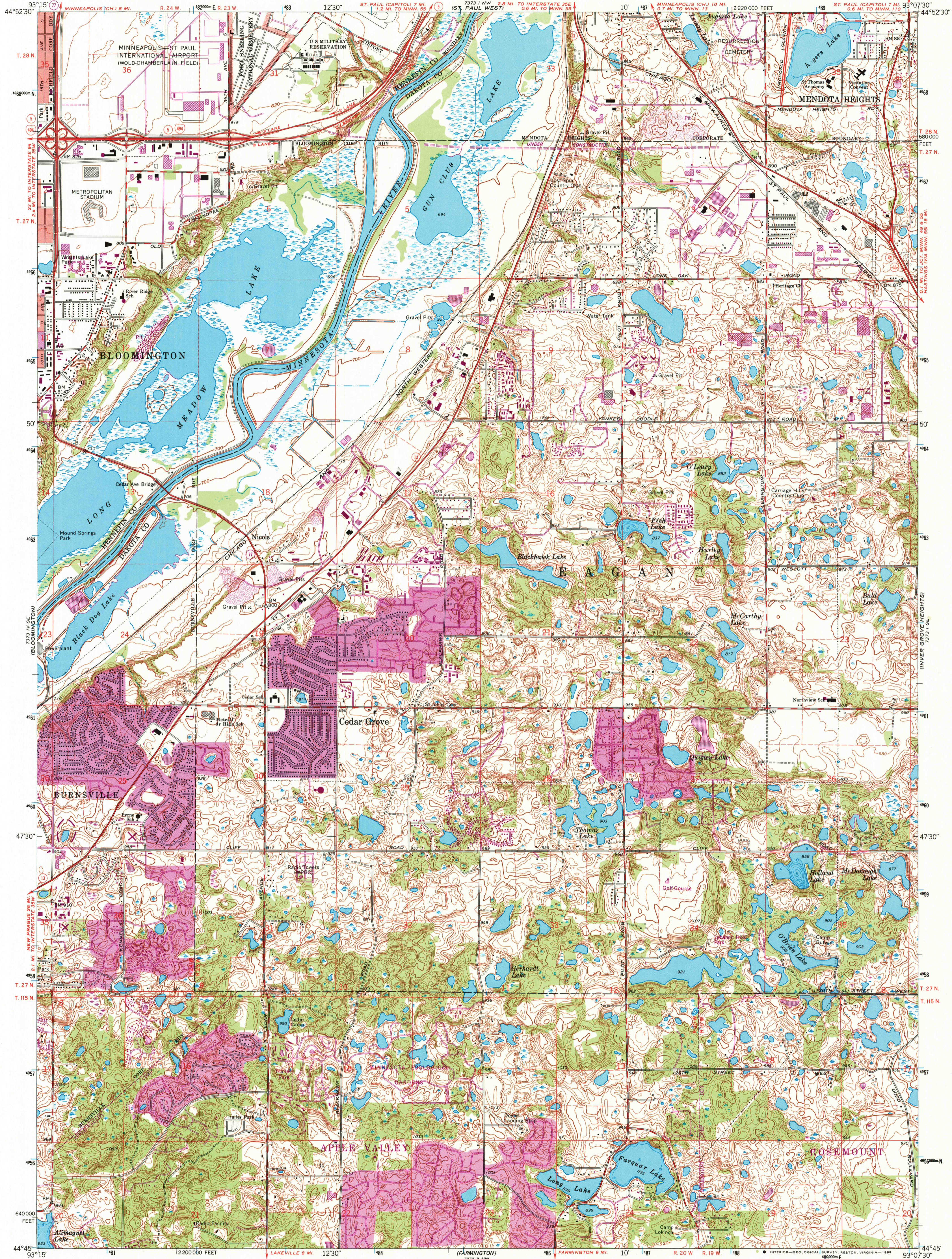


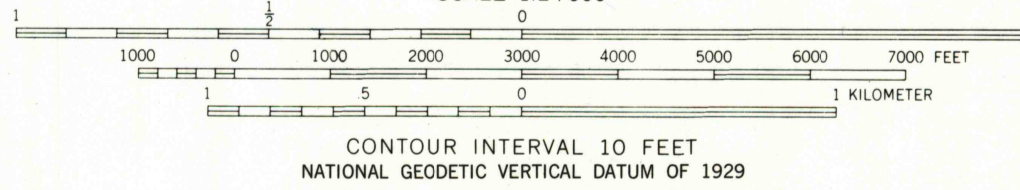
UNITED STATES
DEPARTMENT OF THE INTERIOR
GEOLOGICAL SURVEY

ST. PAUL SW QUADRANGLE
MINNESOTA
7.5 MINUTE SERIES (TOPOGRAPHIC)
SW/4 ST. PAUL 15' QUADRANGLE



Mapped, edited, and published by the Geological Survey
Control by USGS and USC&GS
Topography by photogrammetric methods from aerial photographs taken 1947 and planetary surveys 1951. Revision from aerial photographs taken 1966. Field checked 1967
Hydrography compiled from information furnished by Minnesota Department of Conservation
Polyconic projection. 1927 North American datum, 10,000-foot grid based on Minnesota coordinate system, south zone 1000-meter Universal Transverse Mercator grid ticks, zone 15, shown in blue
Red tint indicates areas in which only landmark buildings are shown
Dotted land lines established by private survey
To place on the predicted North American Datum 1983 move the projection lines 7 meters north and 17 meters east as shown by dashed corner ticks

UTM GRID AND 1980 MAGNETIC NORTH DECLINATION AT CENTER OF SHEET
There may be private inholdings within the boundaries of the National or State reservations shown on this map



THIS MAP COMPLIES WITH NATIONAL MAP ACCURACY STANDARDS FOR SALE BY U.S. GEOLOGICAL SURVEY DENVER, COLORADO 80225, OR RESTON, VIRGINIA 22092 A FOLDER DESCRIBING TOPOGRAPHIC MAPS AND SYMBOLS IS AVAILABLE ON REQUEST

ROAD CLASSIFICATION
Primary highway, Light-duty road, hard or improved surface
Secondary highway, hard surface, Unimproved road
Interstate Route, U.S. Route, State Route



ST. PAUL SW, MINN.
SW/4 ST. PAUL 15' QUADRANGLE
44093-G2-1F-024
1967
PHOTOREVISED 1972 AND 1980
DMA 7373 1 SW-SERIES V872

USGS MINN HISTORICAL MAP
FEB - 1988
REC'D FILE COPY