

30 X 60 MINUTE QUADRANGLE
SHOWING

- Contours and elevations in meters
- Highways, roads and other manmade structures
- Water features
- Woodland areas
- Geographic names



GEOLOGICAL SURVEY

1985
PHOTOINSPECTED 1986

Produced by the United States Geological Survey
 Compiled from USGS 1:24 000-scale topographic maps dated 1967-1980. Planimetry revised from aerial photographs taken 1980 and other source data. Revised information not field checked. Map edited 1985
 Projection and 10 000-meter grid, zone 15, Universal Transverse Mercator
 25 000-foot grid ticks based on Wisconsin coordinate system, central zone and Minnesota coordinate system, south and central zones
 1927 North American Datum
 To place on the predicted North American Datum 1983, move the projection lines 7 meters north and 15 meters east
 There may be private inholdings within the boundaries of the National or State reservations shown on this map

Map photoinspected using 1986 photographs
 No major culture or drainage changes found
 CONTOUR INTERVAL 10 METERS
 NATIONAL GEODETIC VERTICAL DATUM OF 1929
 ELEVATIONS SHOWN TO THE NEAREST METER

THIS MAP COMPLIES WITH NATIONAL MAP ACCURACY STANDARDS

CONVERSION TABLE		DECLINATION DIAGRAM		ADJOINING MAPS	
Meters	Feet	ON MIN		1	2
1	3.2808	0° 00'		3	4
2	6.5617	0° 01'		4	5
3	9.8425	0° 02'		5	6
4	13.1234	0° 03'		6	7
5	16.4042	0° 04'		7	8
6	19.6850	0° 05'			
7	22.9659	0° 06'			
8	26.2467	0° 07'			
9	29.5275	0° 08'			
10	32.8084	0° 09'			

UTM grid convergence (GN) and 1983 magnetic declination (MG) at center of map. Diagram is approximate.

FOR SALE BY U.S. GEOLOGICAL SURVEY
DENVER, COLORADO 80225, OR RESTON, VIRGINIA 22092

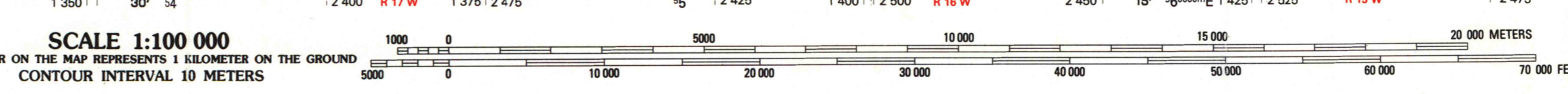
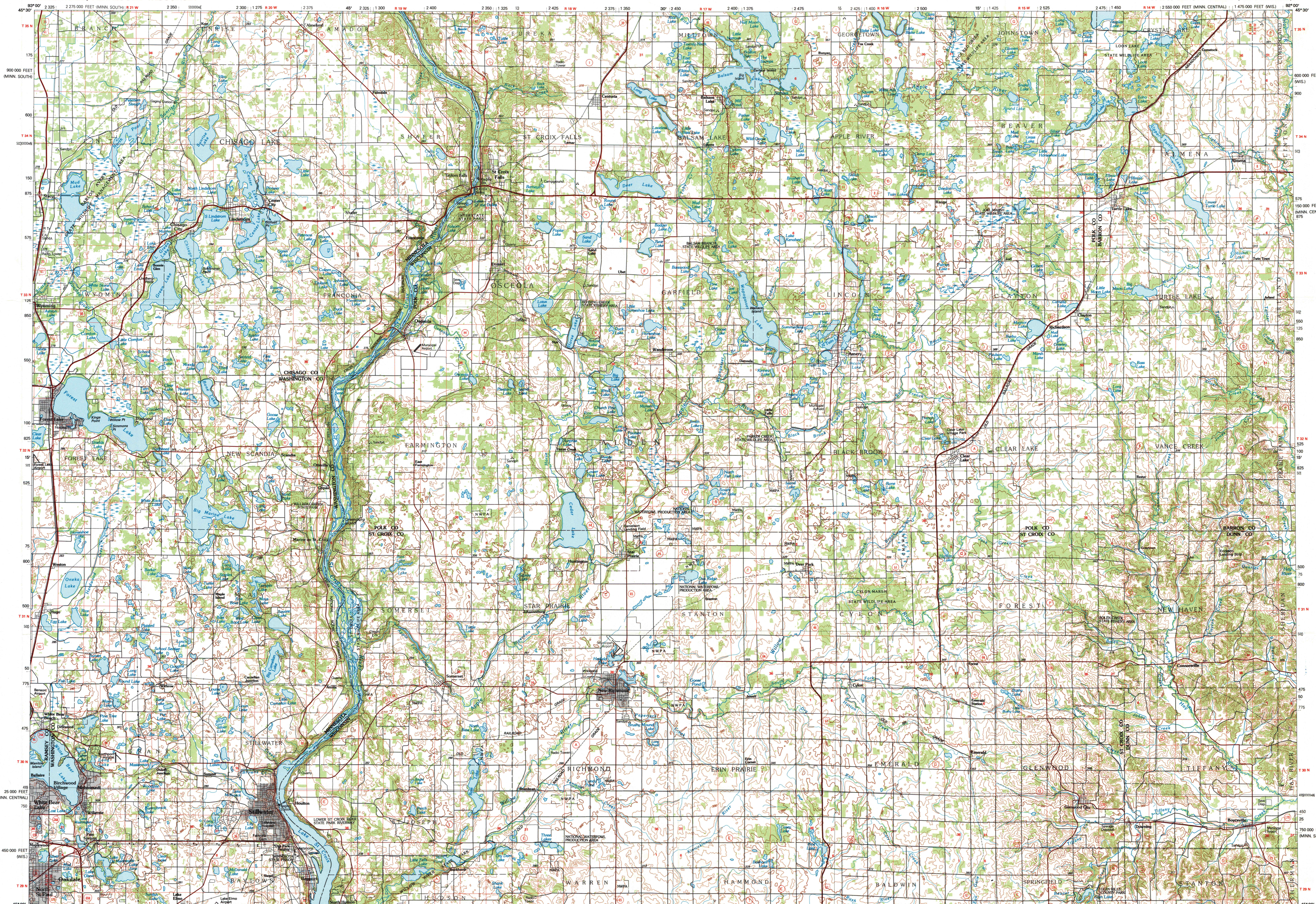
A.H. ROBINSON
MAP LIBRARY
JUL 22 1993

University of Wisconsin
Madison
Topographic Map Symbols

Primary highway, hard surface	
Secondary highway, hard surface	
Light duty road, principal street, hard or improved surface	
Other road or street; trail	
Route marker: Interstate, U.S. State	
Railroad: standard gage, narrow gage	
Bridge: overpass, underpass	
Tunnel: road, railroad	
Built-up area, locality, station	
Airport: landing field, landing strip	
National boundary	
State boundary	
County boundary	
National or State reservation boundary	
Land grant boundary	
U.S. public lands survey: range, township, section	
Range, township, section line: projected	
Power transmission line: pipeline	
Dam; dam with lock	
Cemetery; building	
Wellhead; water well; spring	
Mine shaft; shaft or ore; mine; quarry; gravel pit	
Campground; picnic area; U.S. location monument	
Ruin; cliff dwelling	
Distorted surface: strip mine, lava; sand	
Contours: index; intermediate; supplementary	
Bathymetric contours: index; intermediate	
Stream, lake; perennial; intermittent	
Rapid; large and small; wide, large and small	
Area to be submerged; marsh, swamp	
Land subject to contracted inundation; woodland	
Scrub; mangrove	
Orchard; vineyard	

A pamphlet describing topographic maps is available on request

Boo6-9/8



STILLWATER, MINNESOTA-WISCONSIN
45092-A1-TM-100