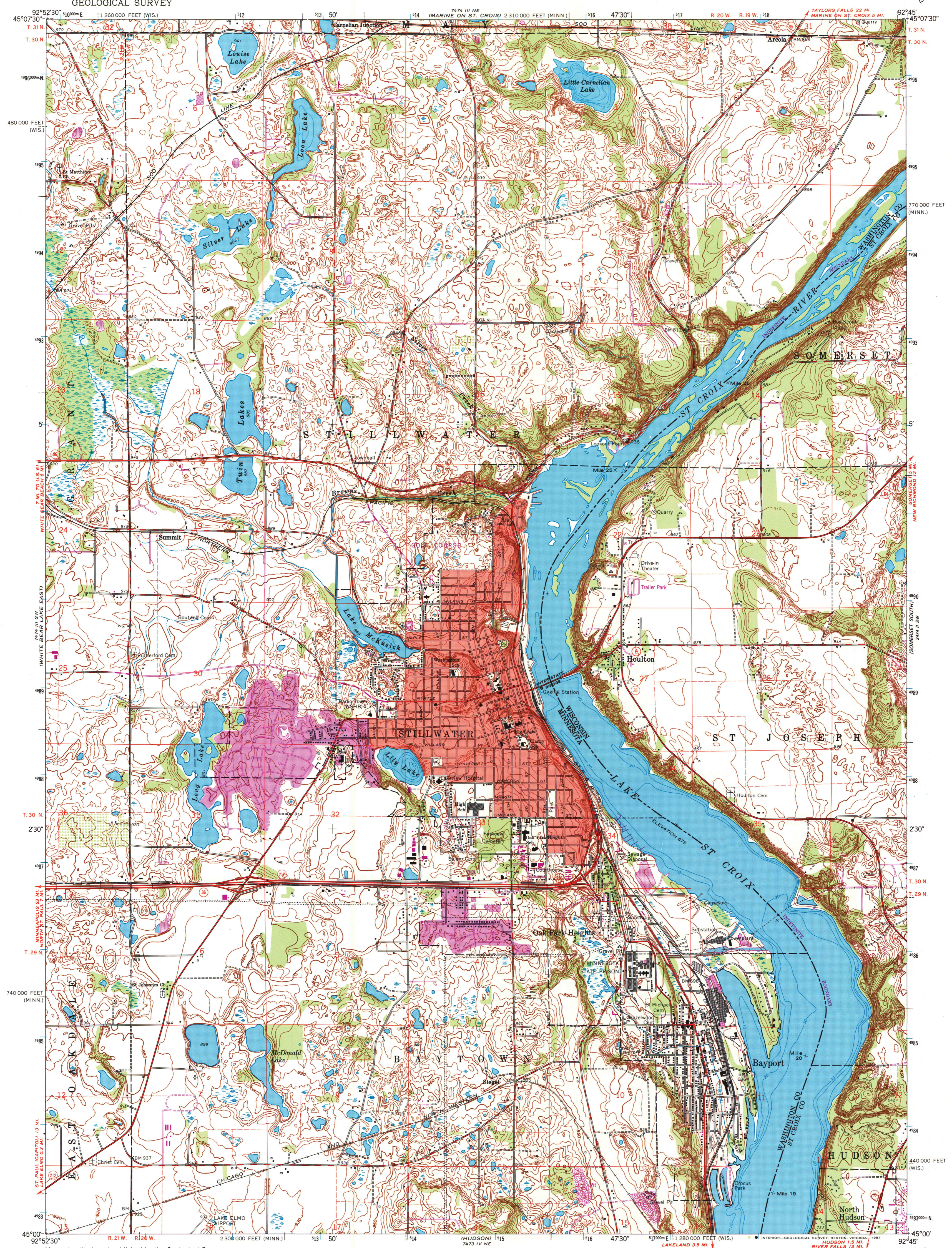
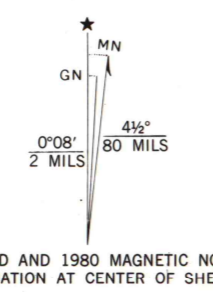


UNITED STATES
DEPARTMENT OF THE INTERIOR
GEOLOGICAL SURVEY

STILLWATER QUADRANGLE
MINNESOTA - WISCONSIN
7.5 MINUTE SERIES (TOPOGRAPHIC)



Maped, edited, and published by the Geological Survey in cooperation with Minnesota Department of Administration Control by USGS, USC&GS, and USCE
Topography by photogrammetric methods from aerial photographs taken 1949 and planimetric surveys 1946. Revised 1967 from aerial photographs taken 1966
Depth curves compiled from charts furnished by Minnesota Department of Conservation
Polyconic projection. 1927 North American datum 10,000-foot grids based on Minnesota coordinate system, south zone and Wisconsin coordinate system, central zone
1000-meter Universal Transverse Mercator grid ticks, zone 15, shown in blue
Red tint indicates area in which only landmark buildings are shown
To place on the predicted North American Datum 1983 move the projection lines 7 meters north and 16 meters east as shown by dashed corner ticks



SCALE 1:24,000

CONTOUR INTERVAL 10 FEET
NATIONAL GEODETIC VERTICAL DATUM OF 1929

ARTHUR H. ROBINSON MAP LIBRARY
University of Wisconsin-Madison

THIS MAP COMPLIES WITH NATIONAL MAP ACCURACY STANDARDS
FOR SALE BY U. S. GEOLOGICAL SURVEY, DENVER, COLORADO 80225, OR RESTON, VIRGINIA 22092
AND WISCONSIN GEOLOGICAL AND NATURAL HISTORY SURVEY, MADISON, WISCONSIN 53706
A FOLDER DESCRIBING TOPOGRAPHIC MAPS AND SYMBOLS IS AVAILABLE ON REQUEST

JUL 21 1993



ROAD CLASSIFICATION
Heavy-duty ——— Light-duty ———
Medium-duty ——— Unimproved dirt ———
State Route

STILLWATER, MINN. - WIS.

45092-A7-F-024
1967
PHOTOREVISED 1980
DMA 7474 III SE-SERIES V872

1980
COPY
MN-1