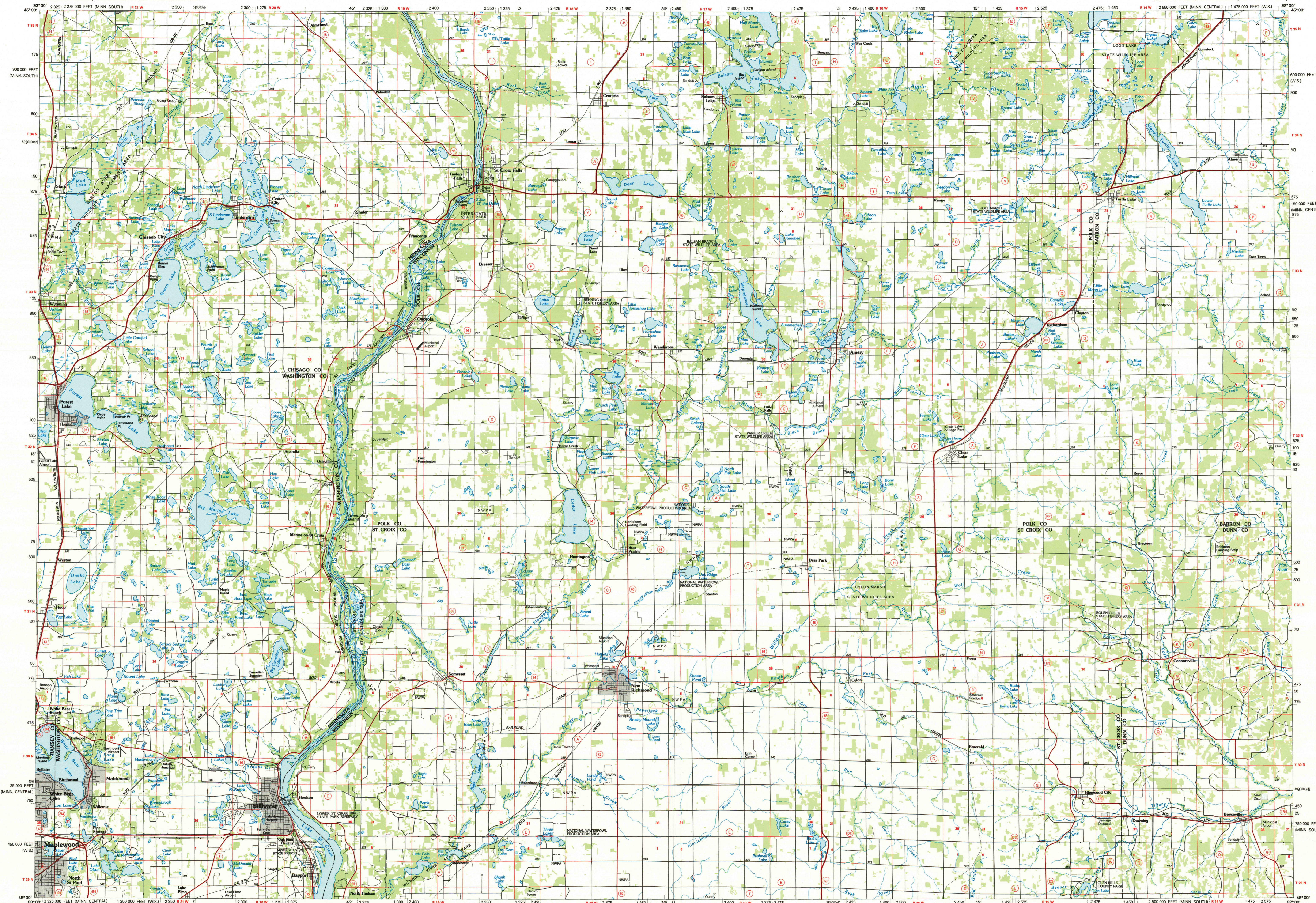


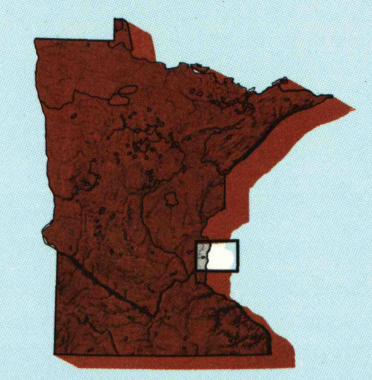
STILLWATER, MINNESOTA-WISCONSIN

30 X 60 MINUTE SERIES (PLANIMETRIC)



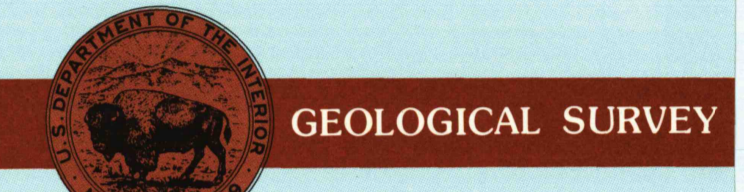
Stillwater MINNESOTA-WISCONSIN

1:100 000-scale planimetric map



30 X 60 MINUTE QUADRANGLE SHOWING

- Elevations in meters
- Highways, roads and other manmade structures
- Water features
- Woodland areas
- Geographic names



1985

Produced by the United States Geological Survey
 Compiled from USGS 1:250 000-scale topographic maps dated 1967-1980. Planimetry revised from aerial photographs taken 1980 and other source data. Revised information not field checked. Map edited 1985.

Universal Transverse Mercator
 25 000-foot grid ticks based on Wisconsin coordinate system, central zone and Minnesota coordinate system, south and central zones
 1927 North American Datum
 To place on the predicted North American Datum 1983, move the projection lines 7 meters north and 15 meters east
 There may be private inclusions within the boundaries of the National or State Reservations shown on this map

NATIONAL GEODETIC VERTICAL DATUM OF 1929
 ELEVATIONS SHOWN TO THE NEAREST METER

THIS MAP COMPLES WITH NATIONAL MAP ACCURACY STANDARDS

CONVERSION TABLE		DECLINATION DIAGRAM		ADJOINING MAPS		
Meters	Feet	MAGNETIC		1	2	3
1	3.2808	071°		1	2	3
2	6.5617	071°		4	5	6
3	9.8425	071°		7	8	
4	13.1234	071°				
5	16.4042	071°				
6	19.6851	071°				
7	22.9659	071°				
8	26.2468	071°				
9	29.5276	071°				
10	32.8085	071°				

To convert meters to feet multiply by 3.2808
 To convert feet to meters multiply by 0.3048

UTM grid convergence (GN) and 1983 magnetic declination (MN) at center of map
 Diagram is approximate

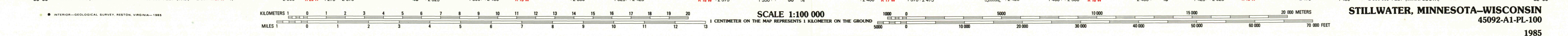
1 Mora
 2 Grandbarr
 3 Spooner
 4 Anoka
 5 Hibbing
 6 Saint Paul
 7 Hastings
 8 Eau Claire

FOR SALE BY U. S. GEOLOGICAL SURVEY
 RESTON, VIRGINIA 22092

Topographic Map Symbols

- Primary highway, hard surface
- Secondary highway, hard surface
- Light duty road, principal street, hard or improved surface
- Other road or street, track
- Roads marker: interstate, U.S., State
- Railroad: standard gage, narrow gage
- Bridge: overpass, underpass
- Tunnel: road, railroad
- Built up area, locality, elevation
- Airport, landing field, landing strip
- National boundary
- State boundary
- County boundary
- National or State reservation boundary
- Land grant boundary
- U.S. public lands survey: range, township, section
- Range, township, section line, tract
- Power transmission line, pipeline
- Dam, dam with lock
- Cemetery, building
- Windmill, water well, spring
- Mini shaft, adit or cave, mine, quarry, gravel pit
- Campground, picnic area, U.S. location monument
- Ruins, cliff dwelling
- Distorted surface: strip mine, lava, sand
- Contours: index, intermediate, supplementary
- Bathymetric contours: index, intermediate
- Stream, lake, canal, intermittent
- Rapids, large and small; falls, large and small
- Area to be submerged; marsh, swamp
- Land subject to controlled inundation; woodland
- Soak, mangrove
- Drainage, vineyard

A pamphlet describing topographic maps is available on request



STILLWATER, MINNESOTA-WISCONSIN
 45092-A1-PL-100

1985