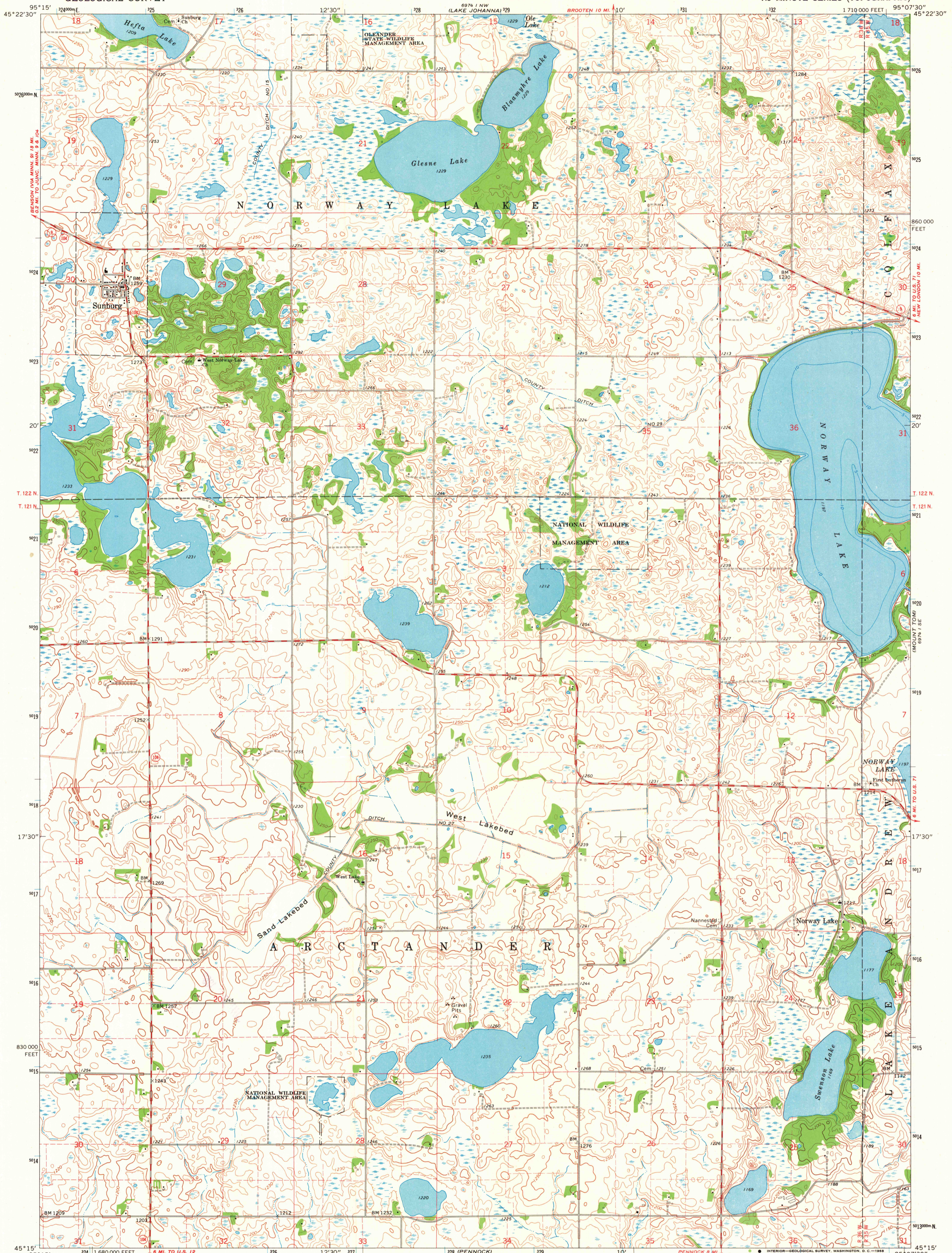
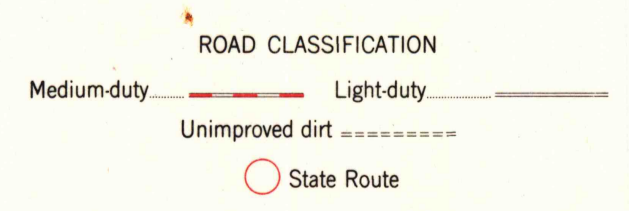
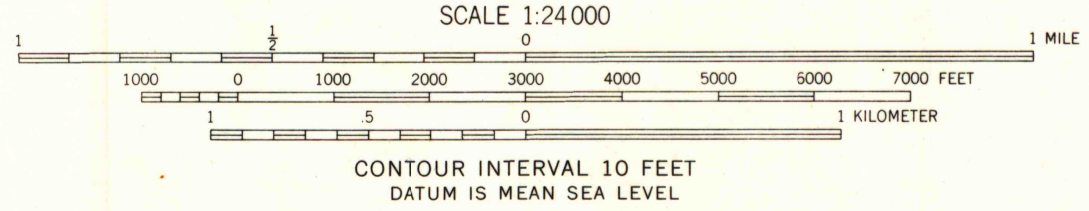


8974 NW
5274 NE
RELEASABLE



Mapped, edited, and published by the Geological Survey
Control by USGS and USC&GS
Topography by photogrammetric methods from aerial
photographs taken 1965. Field checked 1967
Depth curves compiled from charts furnished by
Minnesota Department of Conservation
Polyconic projection. 1927 North American datum
10,000-foot grid based on Minnesota coordinate system, south zone
1000-meter Universal Transverse Mercator grid ticks,
zone 15, shown in blue
Fine red dashed lines indicate selected fence and field lines where
generally visible on aerial photographs. This information is unchecked



THIS MAP COMPLIES WITH NATIONAL MAP ACCURACY STANDARDS
FOR SALE BY U.S. GEOLOGICAL SURVEY, DENVER, COLORADO 80225, OR WASHINGTON, D.C. 20242
A FOLDER DESCRIBING TOPOGRAPHIC MAPS AND SYMBOLS IS AVAILABLE ON REQUEST

SUNBURG, MINN.
N4515-W9507.5/7.5
1967
AMS 6974 1 SW—SERIES V872

MAP AND AIR PHOTO LIBRARY
University of Wisconsin