

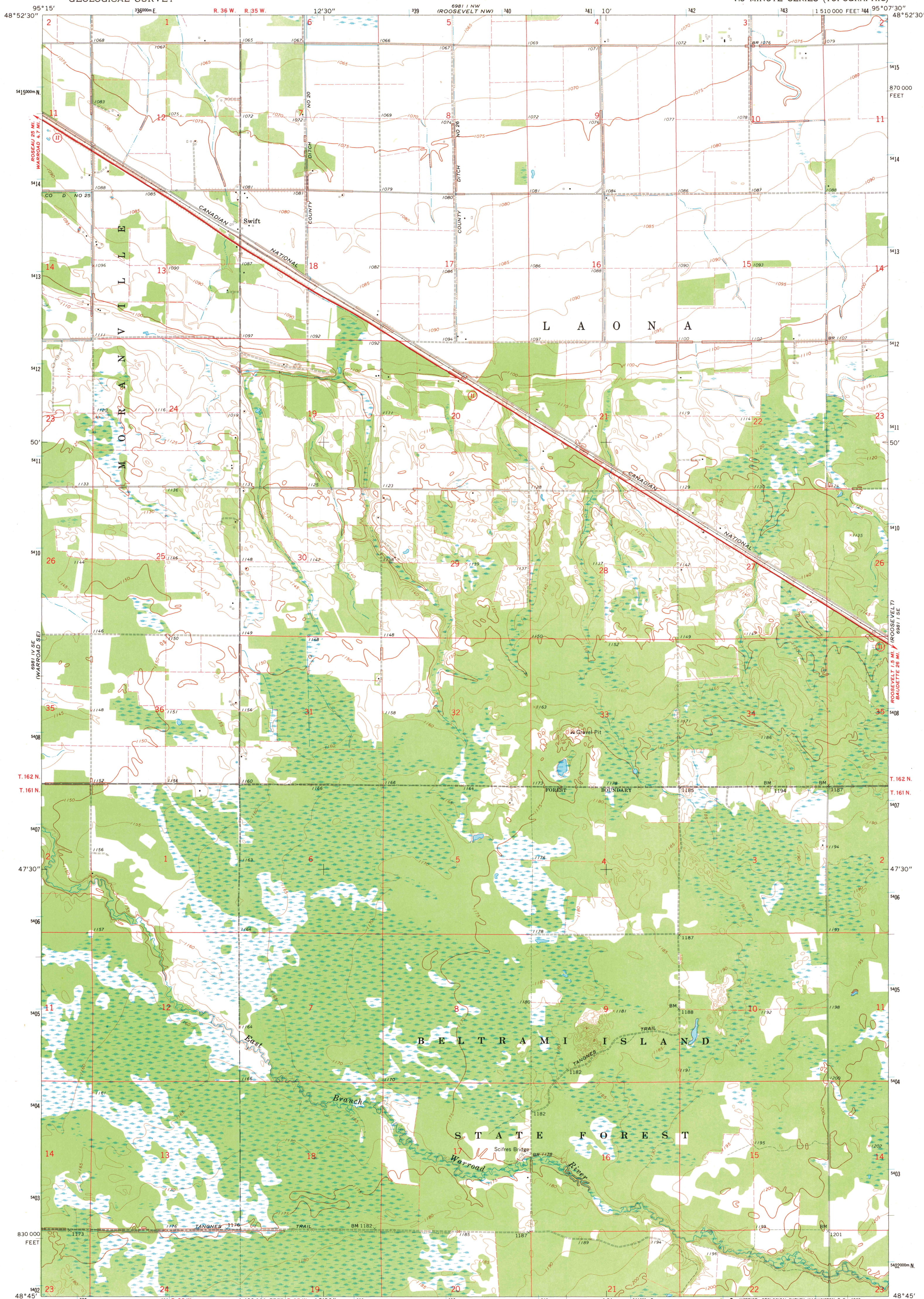
688 I V SE
(WARROAD SE)

UNITED STATES
DEPARTMENT OF THE INTERIOR
GEOLOGICAL SURVEY

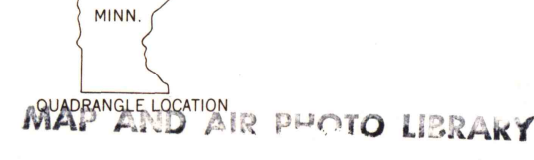
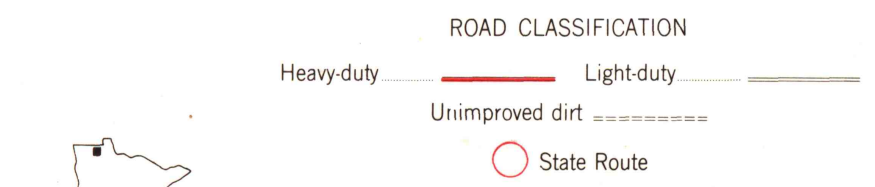
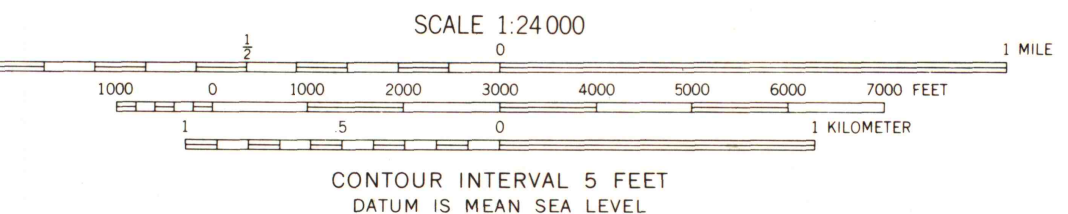
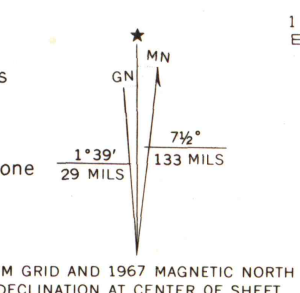
STATE OF MINNESOTA
DEPARTMENT OF ADMINISTRATION

SWIFT QUADRANGLE
MINNESOTA—ROSEAU CO.
7.5 MINUTE SERIES (TOPOGRAPHIC)

688 I NE
(ROOSEVELT NE)



Mapped, edited, and published by the Geological Survey
Control by USGS and USC&GS
Planimetry by photogrammetric methods from aerial photographs
taken 1965. Topography by planetable surveys 1967
Polyconic projection. 1927 North American datum
10,000-foot grid based on Minnesota coordinate system, north zone
1000-meter Universal Transverse Mercator grid ticks,
zone 15, shown in blue
Fine red dashed lines indicate selected fence and field lines
where generally visible on aerial photographs
This information is unchecked



SWIFT, MINN.
N4845—W9507.5/7.5

THIS MAP COMPLIES WITH NATIONAL MAP ACCURACY STANDARDS
FOR SALE BY U.S. GEOLOGICAL SURVEY, DENVER, COLORADO 80225, OR WASHINGTON, D. C. 20242
A FOLDER DESCRIBING TOPOGRAPHIC MAPS AND SYMBOLS IS AVAILABLE ON REQUEST

DEC 2 - 1969

University of Wisconsin

1967
AMS 6981 I SW—SERIES V872