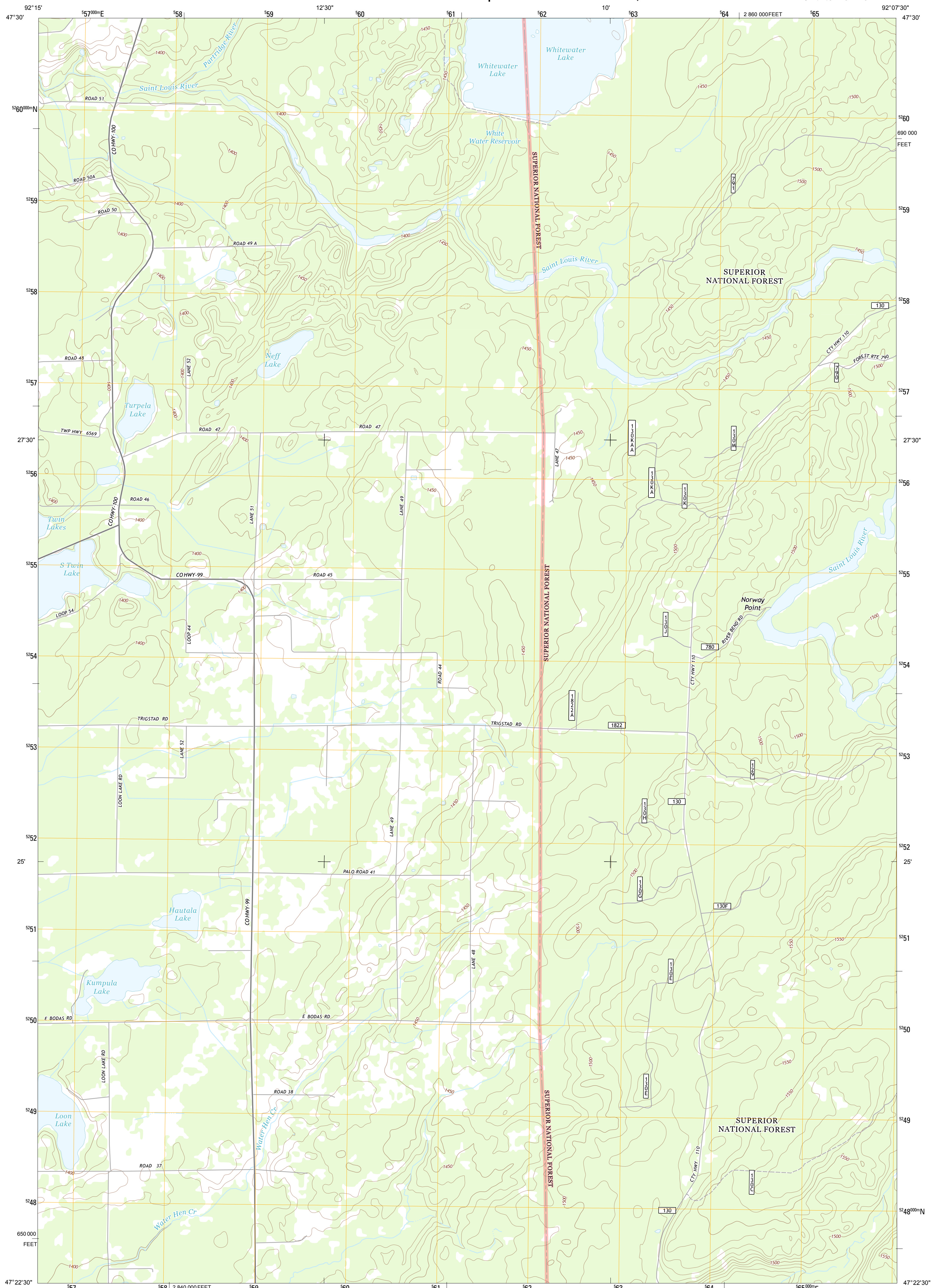




U.S. DEPARTMENT OF THE INTERIOR  
U. S. GEOLOGICAL SURVEY

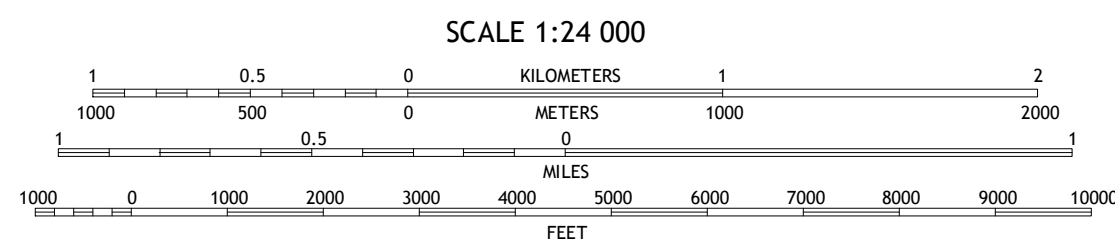
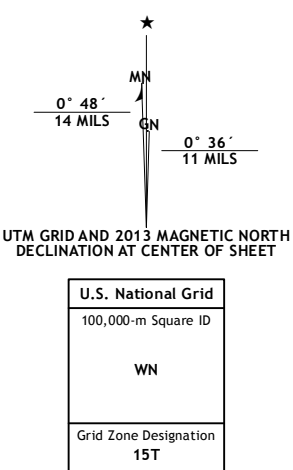


TURPELA LAKE QUADRANGLE  
MINNESOTA-ST. LOUIS CO.  
7.5-MINUTE SERIES



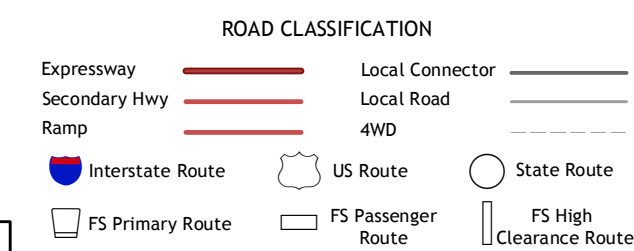
Produced by the United States Geological Survey  
North American Datum of 1983 (NAD83)  
World Geodetic System of 1984 (WGS84). Projection and  
1 000-meter grid: Universal Transverse Mercator, Zone 15T  
10 000-foot ticks: Minnesota Coordinate System of 1983 (north  
zone)

Imagery.....NAP, May 2010  
Roads.....©2006-2012 TomTom  
Roads within US Forest Service Lands.....FS Topo Data  
with limited Forest Service updates, 2013  
Names.....GNIS, 2013  
Hydrography.....National Hydrography Dataset, 2010  
Contours.....National Elevation Dataset, 2007  
Boundaries.....Census, IBWC, IBC, USGS, 1972 - 2012



QUADRANGLE LOCATION

Blwabik	Aurora	Allen
Palo	Turpela Lake	Bird Lake
Makshen	Whitewater Reservoir	Harris Lake



Check with local Forest Service unit  
for current travel conditions and restrictions.

TURPELA LAKE, MN  
2013

ADJOINING 7.5 QUADRANGLES