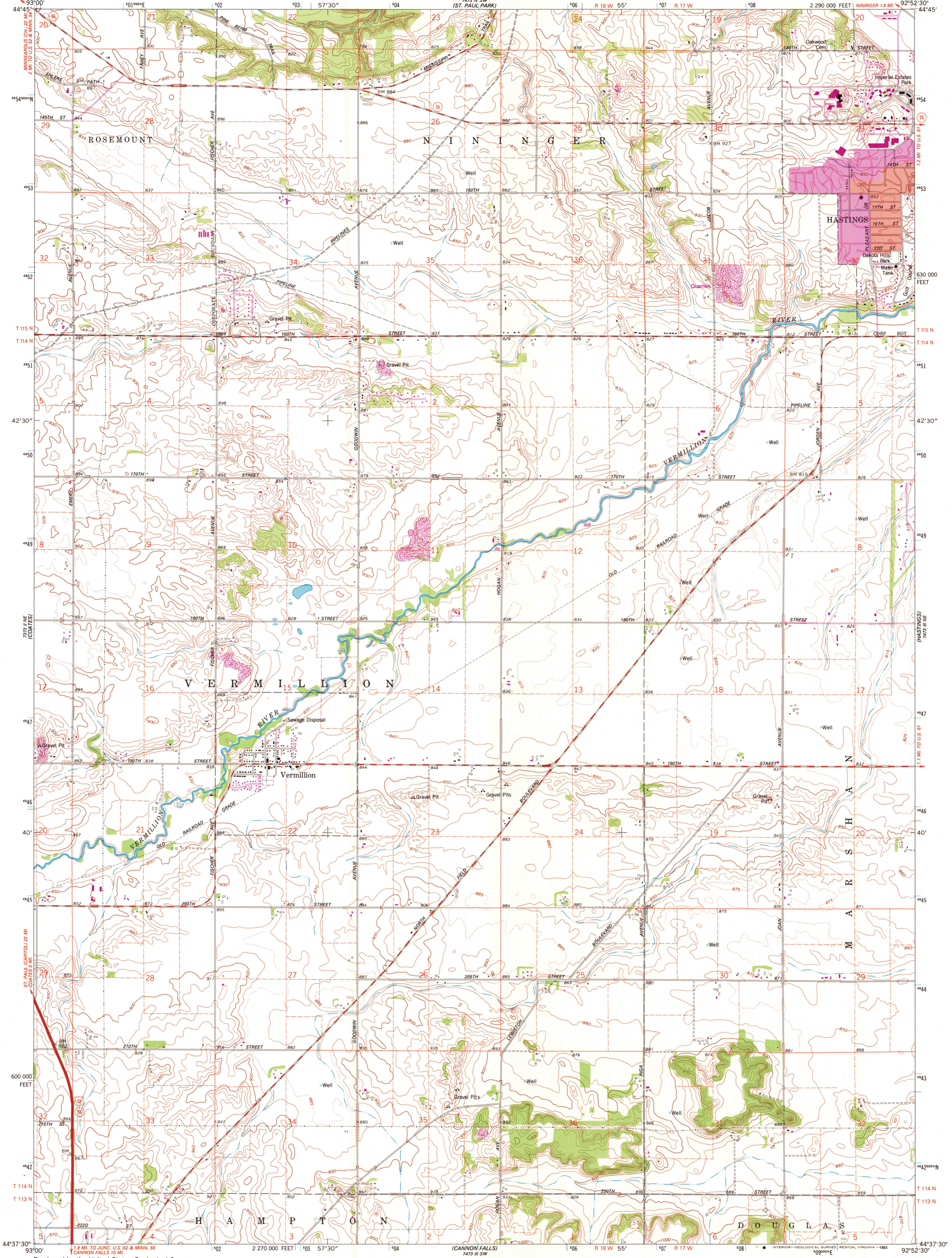
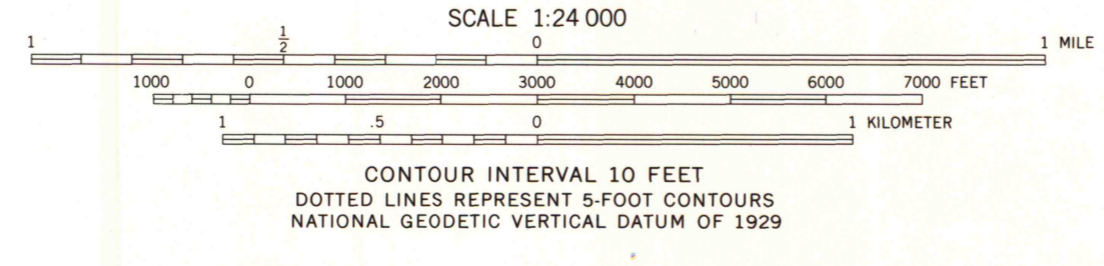


UNITED STATES
DEPARTMENT OF THE INTERIOR
GEOLOGICAL SURVEY

VERMILLION QUADRANGLE
MINNESOTA—DAKOTA CO.
7.5 MINUTE SERIES (TOPOGRAPHIC)
NW/4 HASTINGS 15' QUADRANGLE



Produced by the United States Geological Survey
Control by USGS, NOS/NOAA and Minnesota Highway Department
Topography by photogrammetric methods from aerial photographs taken 1973. Field checked 1974
Projection and 10,000-foot grid ticks: Minnesota coordinate system, south zone (Lambert conformal conic)
1000-meter Universal Transverse Mercator grid ticks, zone 15, shown in blue 1927 North American Datum (NAD 27)
North American Datum of 1983 (NAD 83) is shown by dashed corner ticks. The values of the shift between NAD 27 and NAD 83 for 7.5-minute intersections are given in USGS Bulletin 1875
Red tint indicates area in which only landmark buildings are shown
Fine red dashed lines indicate selected fence and field lines where generally visible on aerial photographs. This information is unchecked



ROAD CLASSIFICATION
Primary highway, hard surface — Light-duty road, hard or improved surface
Secondary highway, hard surface — Unimproved road
Interstate Route — U.S. Route — State Route

VERMILLION, MINN.
NW/4 HASTINGS 15' QUADRANGLE
44092-FB-TF-024
1974
REVISED 1993
DMA 7473 III NW - SERIES V872

A.H. ROBINSON
MAP LIBRARY
MAR 24 1994
University of Wisconsin
Madison
U.S. Regional
Depository Copy
DO NOT DISCARD