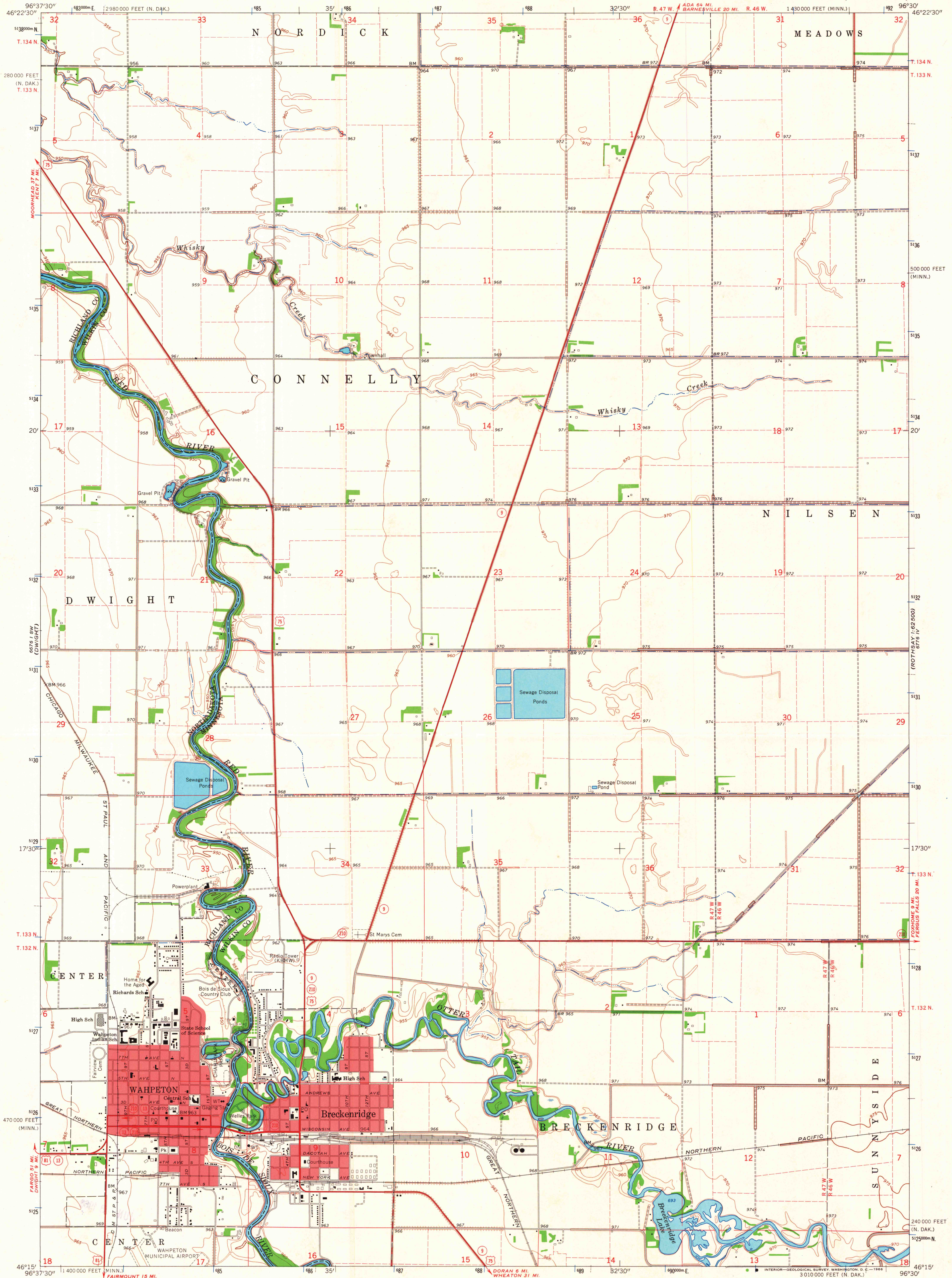


6774 IV
(PO 15 84 V)
1:62,500



Mapped, edited, and published by the Geological Survey
North Dakota area mapped in cooperation with
State of North Dakota, Water Commission
Control by USGS and USC&GS
Planimetry by photogrammetric methods from aerial photographs
taken 1963. Topography by planetable surveys 1964
Polyconic projection. 1927 North American datum
10,000-foot grids based on Minnesota coordinate system, central zone
and North Dakota coordinate system, south zone
1000-meter Universal Transverse Mercator grid ticks,
zone 14, shown in blue
Red tint indicates areas in which only landmark buildings are shown
Fine red dashed lines indicate selected fence and field lines where
generally visible on aerial photographs. This information is unchecked

SCALE 1:24,000
1 0 1000 2000 3000 4000 5000 6000 7000 FEET
1 0 1 2 3 4 5 KILOMETER
CONTOUR INTERVAL 5 FEET
DATUM IS MEAN SEA LEVEL

MAP AND AIR PHOTO LIBRARY
University of Wisconsin

ROAD CLASSIFICATION
Heavy-duty ——— Light-duty ———
Medium-duty ——— Unimproved dirt ———
U.S. Route ——— State Route ———

THIS MAP COMPLIES WITH NATIONAL MAP ACCURACY STANDARDS
FOR SALE BY U.S. GEOLOGICAL SURVEY, DENVER, COLORADO 80225, OR WASHINGTON, D. C. 20242
AND BY THE STATE WATER COMMISSION, BISMARCK, NORTH DAKOTA
A FOLDER DESCRIBING TOPOGRAPHIC MAPS AND SYMBOLS IS AVAILABLE ON REQUEST

WAHPETON, MINN.-N. DAK.
N4615--W9630/7.5
1964
AMS 6676 I SE--SERIES V872

6774 III
(C-4786LLI)
1:62,500