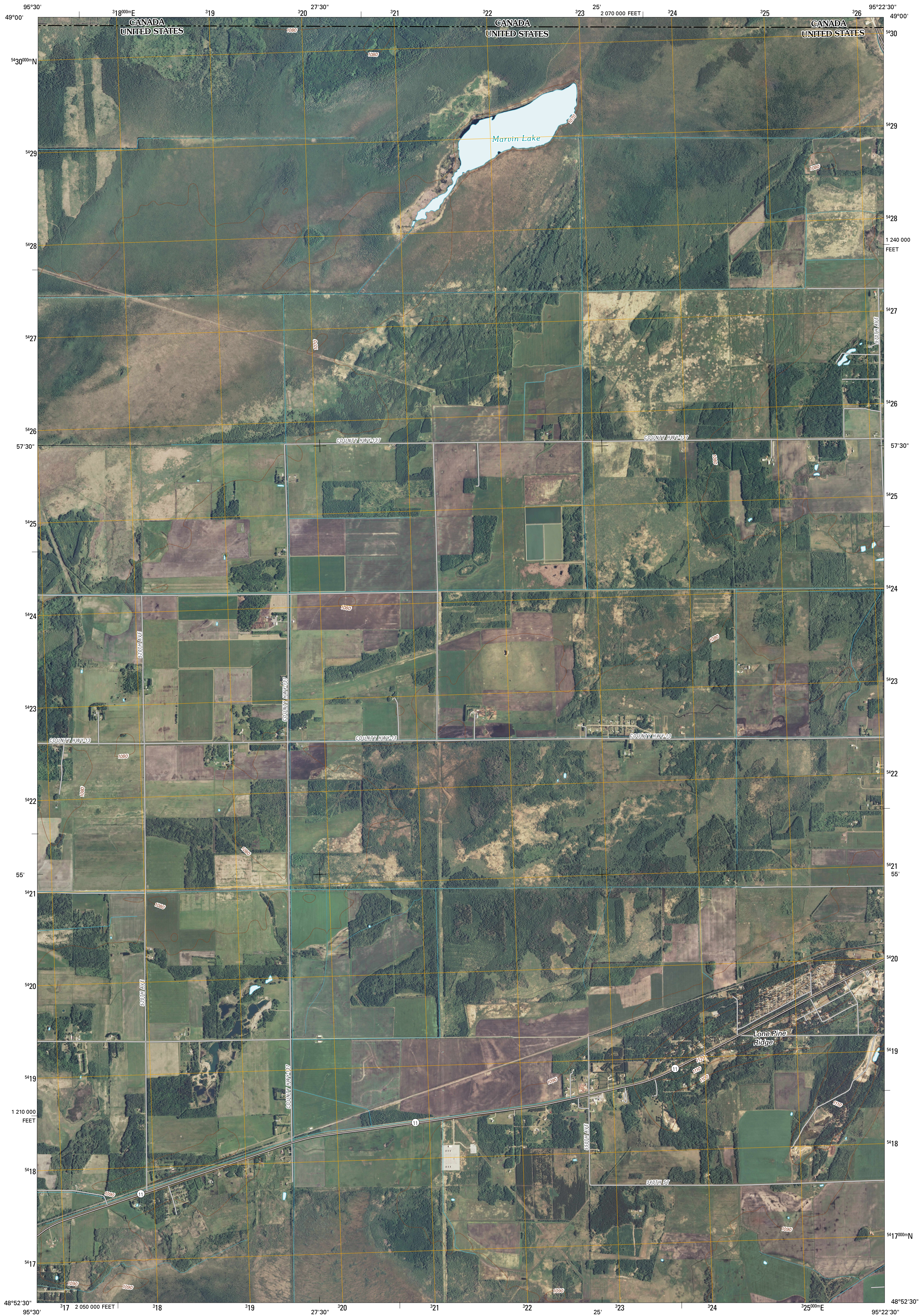




U.S. DEPARTMENT OF THE INTERIOR
U. S. GEOLOGICAL SURVEY



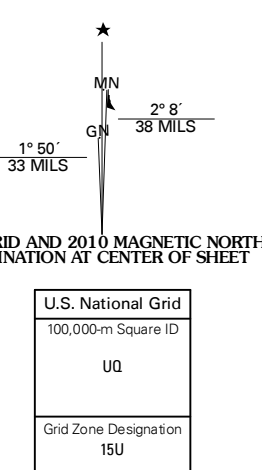
WARROAD NW QUADRANGLE
MINNESOTA-MANITOBA
7.5-MINUTE SERIES



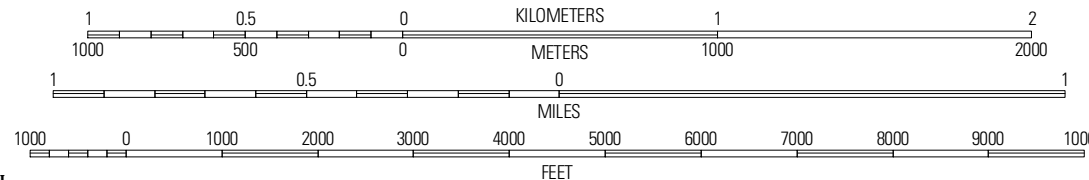
Produced by the United States Geological Survey
North American Datum of 1983 (NAD83)
World Geodetic System of 1984 (WGS84), Projection and
1 000-meter grid; Universal Transverse Mercator, Zone 15U
10 000-foot ticks; Minnesota Coordinate System of 1983
(north zone)

Image: NAD83, July 2009
Roads: 2006-2010 Tele Atlas
Names: GNS, 2008
Hydrography: National Hydrography Dataset, 2009
Contours: National Elevation Dataset, 1999

UTM GRID AND 2010 MAGNETIC NORTH
DECLINATION AT CENTER OF SHEET

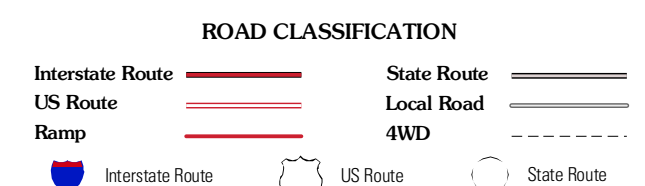
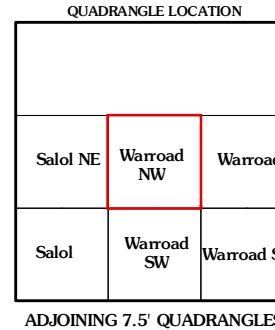


SCALE 1:24 000



CONTOUR INTERVAL 10 FEET
NORTH AMERICAN VERTICAL DATUM OF 1988

This map was produced to conform with version 0.5.10 of the
draft USGS Standards for 7.5-Minute Quadrangle Maps.
A metadata file associated with this product is draft version 0.5.11



WARROAD NW, MN-MB
2010