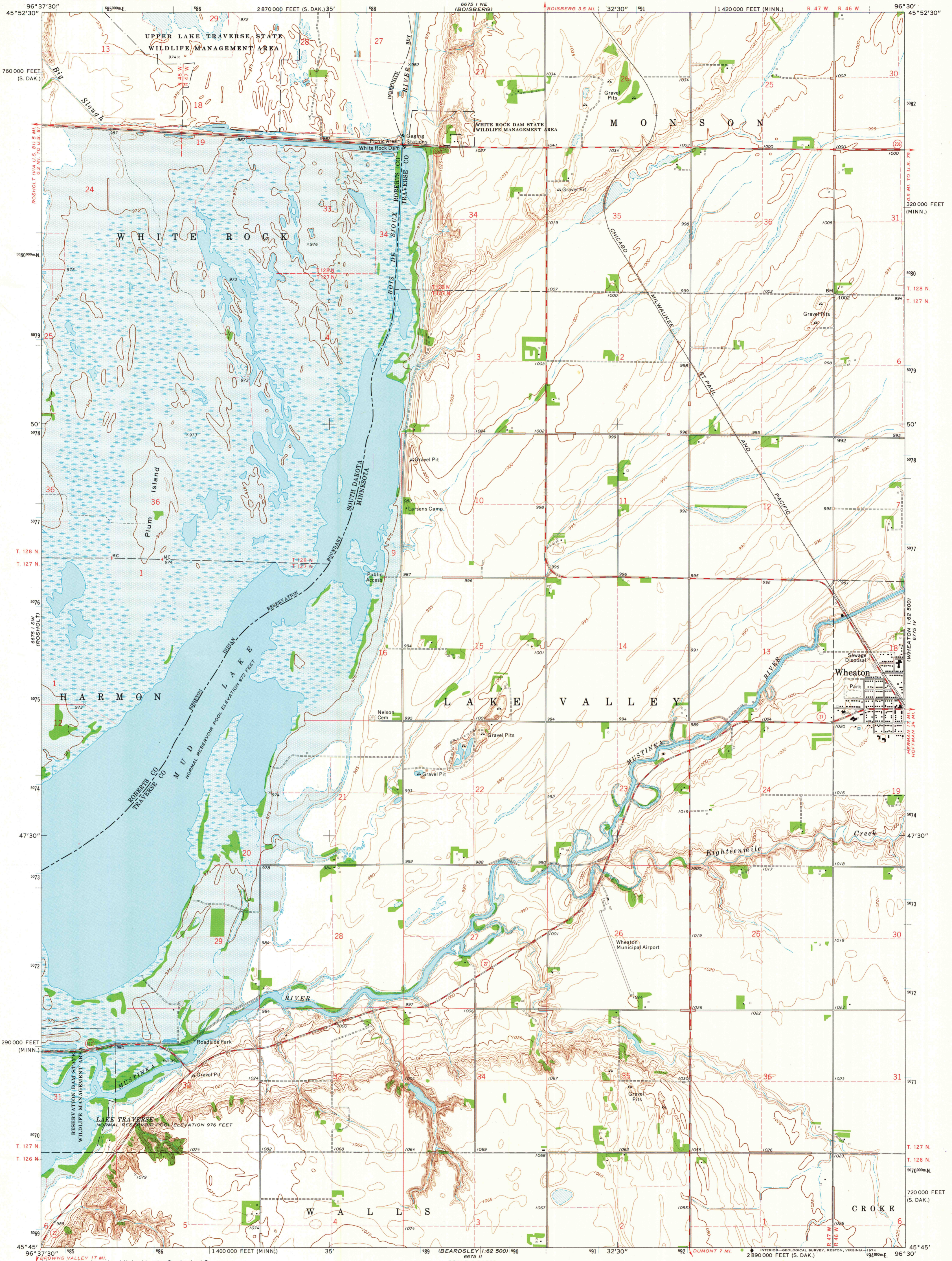
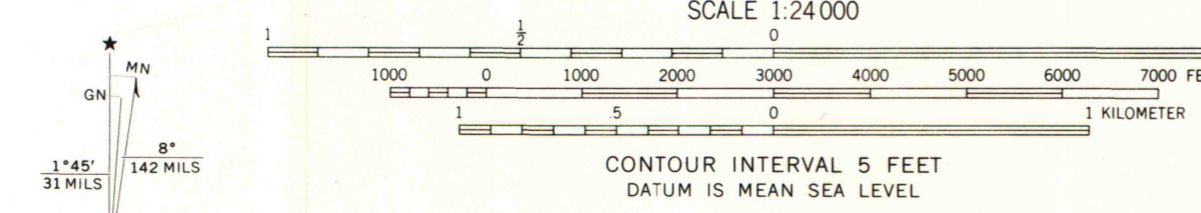


UNITED STATES
DEPARTMENT OF THE INTERIOR
GEOLOGICAL SURVEY

WHEATON WEST QUADRANGLE
MINNESOTA—SOUTH DAKOTA
7.5 MINUTE SERIES (TOPOGRAPHIC)



Maped, edited, and published by the Geological Survey in cooperation with the South Dakota Geological Survey and South Dakota Department of Highways
Control by USGS and USC&GS
Topography by photogrammetric methods from aerial photographs taken 1972. Field checked 1972
Projection: Minnesota coordinate system, central zone (Lambert conformal conic)
10,000-foot grid ticks based on Minnesota coordinate system, central zone and South Dakota coordinate system, north zone
1000-meter Universal Transverse Mercator grid ticks, zone 14, shown in blue. 1927 North American datum
Areas covered by dashed light-blue pattern are subject to controlled inundation
Fine red dashed lines indicate selected fence and field lines where generally visible on aerial photographs. This information is unchecked



ROAD CLASSIFICATION
Primary highway, hard surface
Secondary highway, hard surface
Interstate Route
Light-duty road, hard or improved surface
Unimproved road
U.S. Route
State Route

WHEATON WEST, MINN.—S. DAK.
SE/4 WHITE ROCK 15' QUADRANGLE
N4545—W9630/7.5

1972
AMS 6675 1 SE—SERIES V872

THIS MAP COMPLIES WITH NATIONAL MAP ACCURACY STANDARDS
FOR SALE BY U.S. GEOLOGICAL SURVEY, DENVER, COLORADO 80225, OR RESTON, VIRGINIA 22092
A FOLDER DESCRIBING TOPOGRAPHIC MAPS AND SYMBOLS IS AVAILABLE ON REQUEST

MAP AND AIR PHOTO
MAR 1 1975
University of Wisconsin