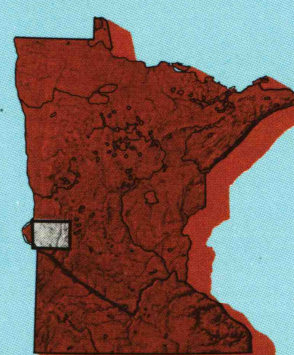


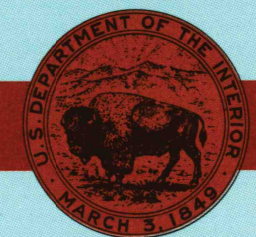
Wheaton MINN.-S. DAK.-N. DAK.

1:100 000-scale metric
topographic map



30 X 60 MINUTE QUADRANGLE
SHOWING

- Contours and elevations in meters
- Highways, roads and other manmade structures
- Water features
- Woodland areas
- Geographic names



GEOLOGICAL SURVEY

1985/90

Produced by the United States Geological Survey
 Compiled from USGS 1:24 000-scale topographic maps dated 1971-1974. Planimetry revised from aerial photographs taken 1984 and other source data. Revised information not field checked. Map edited 1985.
 Projection and 10 000-meter grid, zone 14, Universal Transverse Mercator
 25 000-foot grid ticks based on Minnesota coordinate system, central and south zones, South Dakota coordinate system, north zone and North Dakota coordinate system, south zone 1927 North American Datum
 To place on the predicted North American Datum 1983, move the projection lines 7 meters north and 27 meters east
 There may be geologic holdings within the boundaries of the National or State reservations shown on this map

CONTOUR INTERVAL 5 METERS
 NATIONAL GEODETIC VERTICAL DATUM OF 1929
 ELEVATIONS SHOWN TO THE NEAREST METER

THIS MAP COMPLIES WITH NATIONAL MAP ACCURACY STANDARDS

CONVERSION TABLE		DECLINATION DIAGRAM	
Meters	Feet	Magnetic Declination	
1	3.2808	1 2 3	
2	6.5617	4 5	
3	9.8425	6 7 8	
4	13.1234	1 Lakon	
5	16.4042	2 Wagoner	
6	19.6850	3 Battle Lake	
7	22.9658	4 Sisseton	
8	26.2467	5 Sisseton	
9	29.5275	6 Webster	
10	32.8084	7 Midway	
		8 Willmar	

To convert meters to feet multiply by 3.2808
 To convert feet to meters multiply by 0.3048

UTM grid convergence (IGN and 1983 magnetic declination (MN) at center of map
 Diagram is approximate

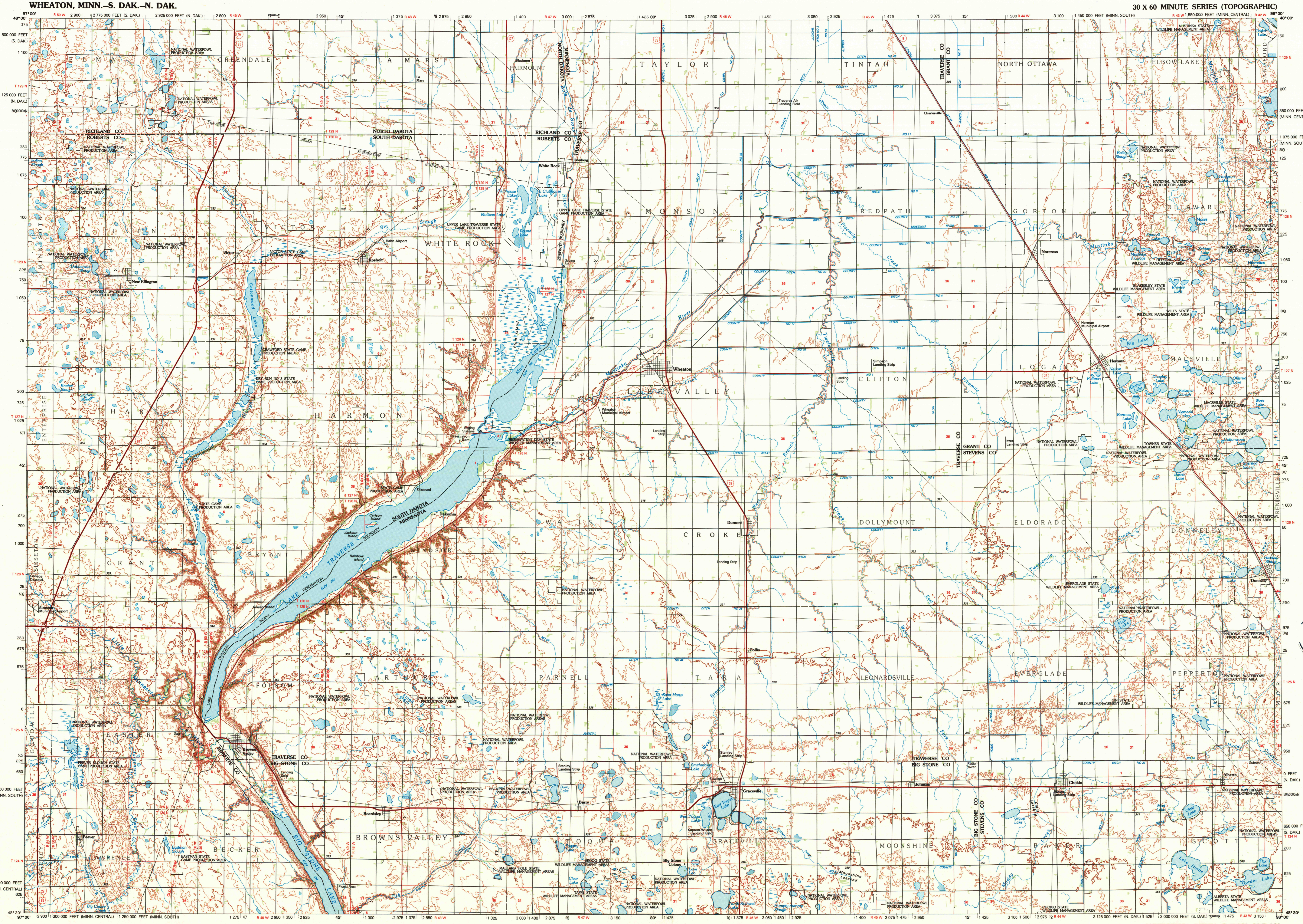
FOR SALE BY U.S. GEOLOGICAL SURVEY
 DENVER, COLORADO 80225, OR RESTON, VIRGINIA 22092

USSS NMD HISTORICAL MAP
 MAR 13 1990
 REC'D FILE COPY

Topographic Map Symbols

- Primary highway, hard surface
- Secondary highway, hard surface
- Light duty road, principal street, hard or improved surface
- Other road or street; trail
- Route marker; Interstate; U.S. State
- Railroad; standard gage; narrow gage
- Bridge; overpass; underpass
- Tunnel; road; railroad
- Built up area; locality; elevation
- Airport; landing field; landing strip
- National boundary
- State boundary
- County boundary
- National or State reservation boundary
- Land grant boundary
- U.S. public lands survey; range, township; section
- Range, township; section line; protracted
- Power transmission line; pipeline
- Dam; dam with lock
- Cemetery; building
- Windmill; water well; spring
- Mine shaft; edit or cave; mine, quarry; gravel pit
- Campground; picnic area; U.S. location monument
- Rail; oil; aqueduct
- Distorted surface; strip mine, lava, sand
- Contours; index; intermediate; supplementary
- Bathymetric contours; index; intermediate
- Stream lake; perennial; intermittent
- Rapids, large and small; falls, large and small
- Area to be submerged; marsh, swamp
- Land subject to controlled inundation; woodland
- Scrub; mangrove
- Orchard; vineyard

A pamphlet describing topographic maps is available on request



SCALE 1:100 000
 1 CENTIMETER ON THE MAP REPRESENTS 1 KILOMETER ON THE GROUND
 CONTOUR INTERVAL 5 METERS

KILOMETERS 0 1 2 3 4 5 6 7 8 9 10 11 12 13 14 15 16 17 18 19 20
 METERS 0 1000 2000 3000 4000 5000 6000 7000 8000 9000 10000 11000 12000 13000 14000 15000 16000 17000 18000 19000 20000
 MILES 0 1 2 3 4 5 6 7 8 9 10 11 12 13 14 15 16 17 18 19 20

WHEATON, MINN.-S.DAK.-N.DAK.
 45096-E1-TM-100
 1985