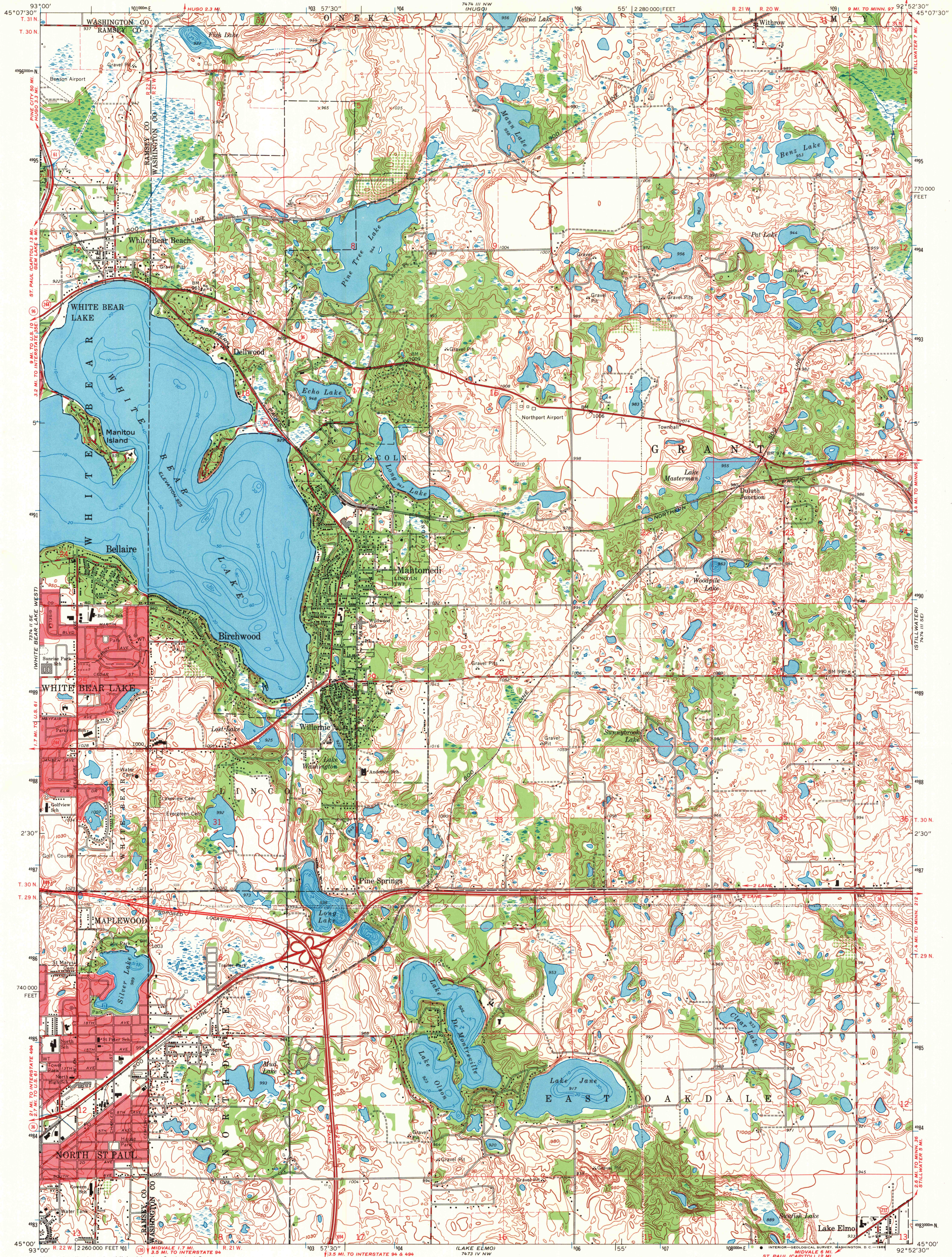
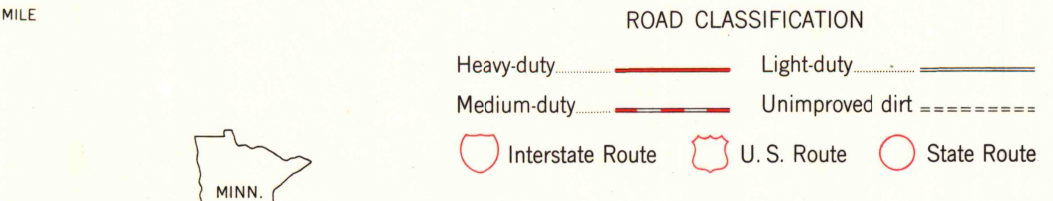
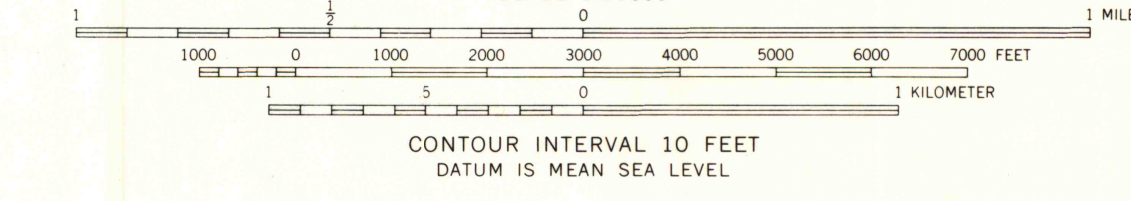
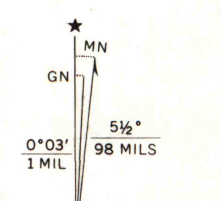


UNITED STATES
DEPARTMENT OF THE INTERIOR
GEOLOGICAL SURVEY

WHITE BEAR LAKE EAST QUADRANGLE
MINNESOTA
7.5 MINUTE SERIES (TOPOGRAPHIC)
SW/4 STILLWATER 15' QUADRANGLE



Mapped, edited, and published by the Geological Survey
in cooperation with Minnesota Department of Administration
Control by USGS and USC&GS
Topography by photogrammetric methods from aerial
photographs taken 1949 and planetable surveys 1946
Field checked 1951. Revised 1967
Depth curves and soundings compiled from charts furnished by
Minnesota Department of Conservation
Polyconic projection. 1927 North American datum
10,000-foot grid based on Minnesota coordinate system, south zone
1000-meter Universal Transverse Mercator grid ticks,
zone 15, shown in blue
Red tint indicates area in which only landmark buildings are shown
Fine red dashed lines indicate selected fence and field lines where
generally visible on aerial photographs. This information is unchecked



MAP AND AIR PHOTO LIBRARY
WHITE BEAR LAKE EAST, MINN.
SW/4 STILLWATER 15' QUADRANGLE
N4500—W9252.5/7.5
AUG 26 1969
1967
AMS 7474 III SW—SERIES V872
UNIVERSITY OF WISCONSIN

THIS MAP COMPLIES WITH NATIONAL MAP ACCURACY STANDARDS
FOR SALE BY U.S. GEOLOGICAL SURVEY, DENVER, COLORADO 80225, OR WASHINGTON, D.C. 20242
A FOLDER DESCRIBING TOPOGRAPHIC MAPS AND SYMBOLS IS AVAILABLE ON REQUEST