

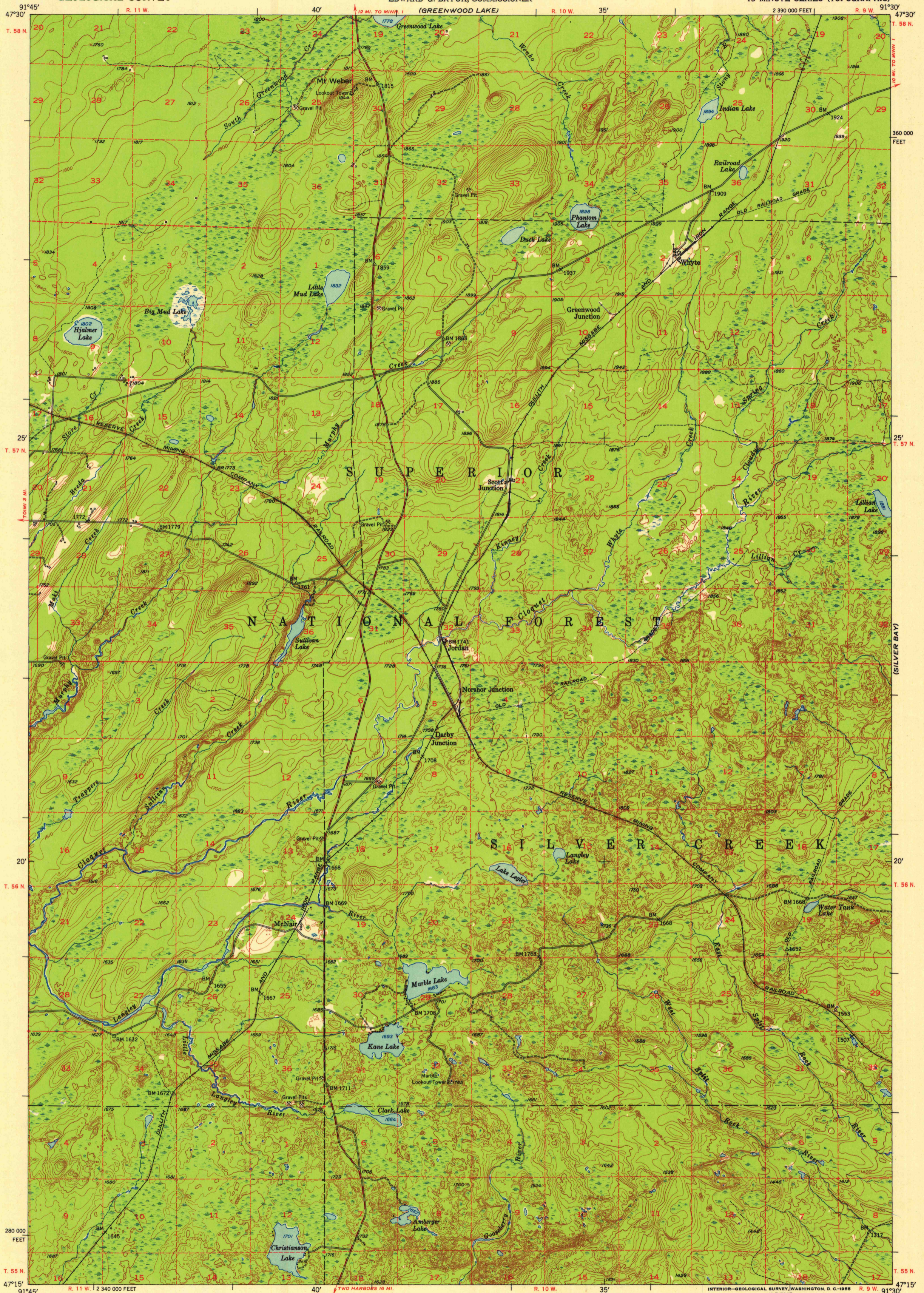
(BABBITT SE)  
1:24,000

UNITED STATES  
DEPARTMENT OF THE INTERIOR  
GEOLOGICAL SURVEY

STATE OF MINNESOTA  
IRON RANGE RESOURCES AND REHABILITATION COMMISSION  
EDWARD G. BAYUK, COMMISSIONER

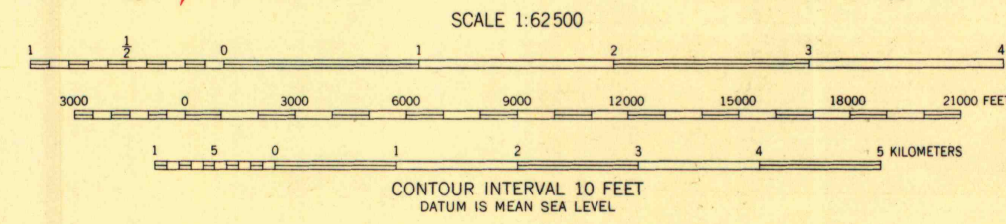
WHYTE QUADRANGLE  
MINNESOTA-LAKE CO.  
15 MINUTE SERIES (TOPOGRAPHIC)

(ISABELLA)



Mapped, edited, and published by the Geological Survey  
Control by USGS and USC&GS  
Topography from aerial photographs by Kelsh plotter  
Aerial photographs taken 1950. Field check 1953  
Polyconic projection. 1927 North American datum  
10,000-foot grid based on Minnesota coordinate system,  
north zone  
Dashed land lines indicate approximate locations

TRUE NORTH  
MAGNETIC NORTH  
APPROXIMATE MEAN  
DECLINATION, 1953



ROAD CLASSIFICATION

Heavy-duty	4 LANE 16 LANE	Light-duty	2 LANE 16 LANE
Medium-duty	4 LANE 16 LANE	Unimproved dirt	-----

U. S. Route (square symbol)  
State Route (circle symbol)



WHYTE, MINN.  
N4715-W9130/15

THIS MAP COMPLIES WITH NATIONAL MAP ACCURACY STANDARDS  
FOR SALE BY U. S. GEOLOGICAL SURVEY, FEDERAL CENTER, DENVER, COLORADO OR WASHINGTON 25, D. C.  
A FOLDER DESCRIBING TOPOGRAPHIC MAPS AND SYMBOLS IS AVAILABLE ON REQUEST

UNIVERSITY OF WISCONSIN  
Department of Geography

1953