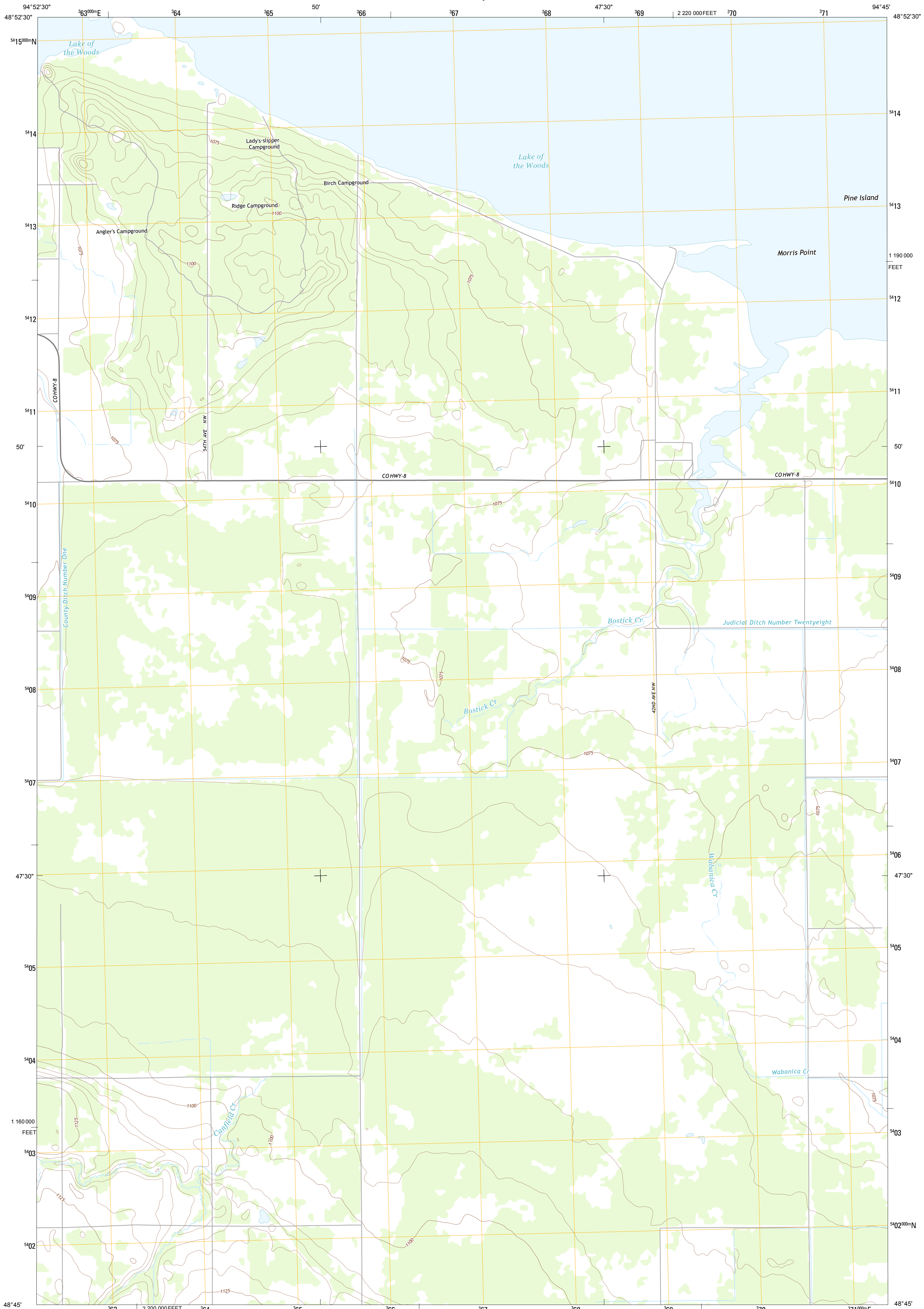




U.S. DEPARTMENT OF THE INTERIOR  
U. S. GEOLOGICAL SURVEY



WILLIAMS SE QUADRANGLE  
MINNESOTA-LAKE OF THE WOODS CO.  
7.5-MINUTE SERIES

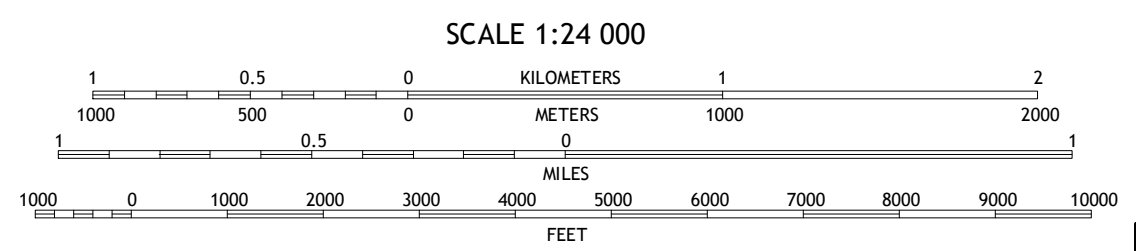


Produced by the United States Geological Survey  
North American Datum of 1983 (NAD83)  
World Geodetic System of 1984 (WGS84) Projection and  
1 000-meter grid; Universal Transverse Mercator, Zone 15U  
10 000-foot ticks; Minnesota Coordinate System of 1983 (north zone)

Imagery.....NAIP, August 2010  
Roads.....G2006-2012 TomTom  
Names.....GNIS, 2013  
Hydrography.....National Hydrography Dataset, 2010  
Contours.....National Elevation Dataset, 2012  
Boundaries.....Census, IBWC, IBC, USGS, 1972 - 2012

UTM GRID AND 2013 MAGNETIC NORTH DECLINATION AT CENTER OF SHEET

U.S. National Grid  
100,000-m Square ID  
UQ  
Grid Zone Designation  
15U



ROAD CLASSIFICATION

Expressway	Local Connector
Secondary Hwy	Local Road
Ramp	4WD
Interstate Route	US Route
	State Route

ADJOINING 7.5 QUADRANGLES

Williams NW	Williams NW DE E	Wheeler Point DE N
Williams SE	Williams SE	Wheeler Point
Graceton NW	Graceton	Pitt

WILLIAMS SE, MN  
2013