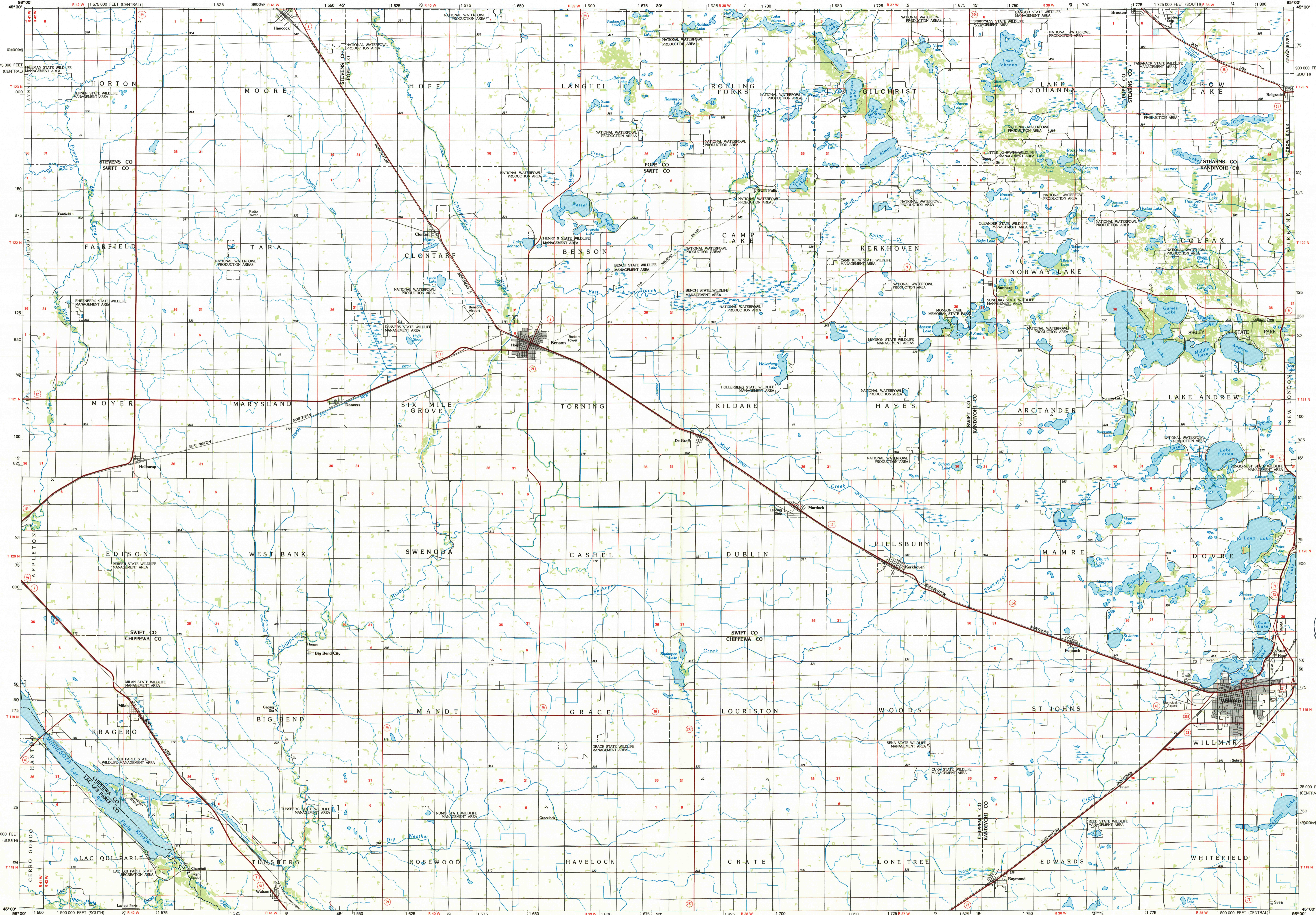


WILLMAR, MINNESOTA

30 X 60 MINUTE SERIES (PLANIMETRIC)



Willmar MINNESOTA
 1:100 000-scale planimetric map

30 X 60 MINUTE QUADRANGLE SHOWING

- Elevations in meters
- Highways, roads and other manmade structures
- Water features
- Woodland areas
- Geographic names

GEOLOGICAL SURVEY
 1986 *1/86*

Produced by the United States Geological Survey
 Compiled from USGS 1:24 000-scale topographic maps dated 1958-1979. Planimetry revised from aerial photographs taken 1984 and other source data. Revised information not field checked. Map edited 1986.

Projection and 10 000-meter grid, zone 15, Universal Transverse Mercator
 25 000-foot grid ticks based on Minnesota coordinate system, south and central zones
 1927 North American Datum
 To place on the predicted North American Datum 1983, move the projection lines 7 meters north and 23 meters east

There may be private inholdings within the boundaries of the National or State reservations shown on this map.

NATIONAL GEODETIC VERTICAL DATUM OF 1929

ELEVATIONS SHOWN TO THE NEAREST METER

THIS MAP COMPLIES WITH NATIONAL MAP ACCURACY STANDARDS

CONVERSION TABLE		DECLINATION DIAGRAM		ADJOINING MAPS		
Meters	Feet	MAGNETIC		1	2	3
1	3.2808	1986		4	5	6
2	6.5617	1987		7	8	
3	9.8425	1988				
4	13.1234	1989				
5	16.4042	1990				
6	19.6850	1991				
7	22.9659	1992				
8	26.2467	1993				
9	29.5275	1994				
10	32.8084	1995				

UTM grid convergence (GM) and 100 magnetic declination (MD) at center of map
 Diagram is approximate

FOR SALE BY U.S. GEOLOGICAL SURVEY
 DENVER, COLORADO 80225, OR RESTON, VIRGINIA 22092

USGS NMD HISTORICAL MAP

APR 23 1986

REC'D FILE COPY

Topographic Map Symbols

Primary highway, hard surface	Secondary highway, hard surface	Light duty road, principal street, hard or improved surface	Other road or street, trail	Route marker: Interstate; U.S. State	Railroad: standard gage; narrow gage	Bridge: overpass; underpass	Tunnel: road; railroad	Built up area, locality, elevation	Airport, landing field, landing strip	National boundary	State boundary	County boundary	National or State reservation boundary	Land grant boundary	U.S. public lands survey: range, township; section	Range, township; section line: projected	Power transmission line: pipeline	Dam; dam with lock	Cemetery; building	Windmill; water well; spring	Wire shaft; ads or caw; mine, quarry; gravel pit	Compass rose; point area; U.S. location monument	Run; cliff dwelling	Distorted surface: strip mine, lava, sand	Contours: index; intermediate; supplementary	Bathymetric contours: index; intermediate	Stream, lake, pond; intermittent	Rapids, large and small; falls, large and small	Area to be submerged; marsh, swamp	Land subject to controlled inundation; woodland	Scrub; mangrove	Orchard; vineyard
-------------------------------	---------------------------------	---	-----------------------------	--------------------------------------	--------------------------------------	-----------------------------	------------------------	------------------------------------	---------------------------------------	-------------------	----------------	-----------------	--	---------------------	--	--	-----------------------------------	--------------------	--------------------	------------------------------	--	--	---------------------	---	--	---	----------------------------------	---	------------------------------------	---	-----------------	-------------------

A pamphlet describing topographic maps is available on request