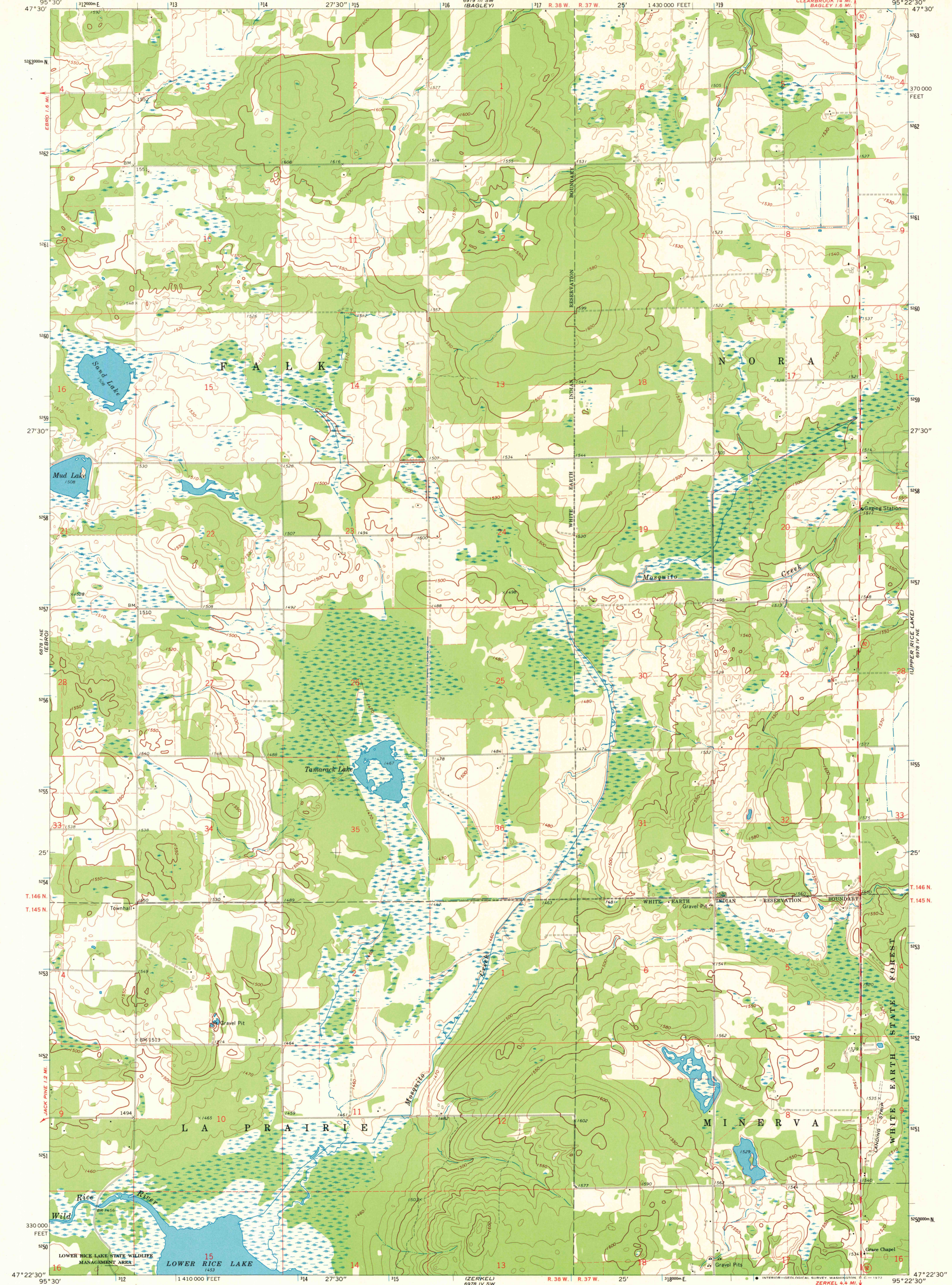
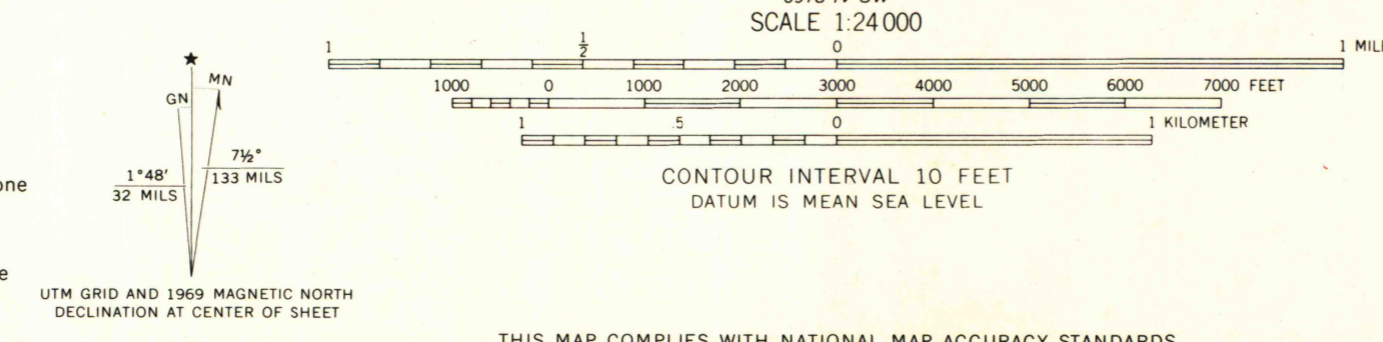


68° 11' 15" E
105° 57' 30" S

68° 11' 15" E
105° 57' 30" S



Mapped, edited, and published by the Geological Survey
Control by USGS and USC&GS
Topography by photogrammetric methods from aerial
photographs taken 1966. Field checked 1969
Polyconic projection. 1927 North American datum
10,000-foot grid based on Minnesota coordinate system, north zone
1000-meter Universal Transverse Mercator grid ticks,
zone 15, shown in blue
Fine red dashed lines indicate selected fence and field lines where
generally visible on aerial photographs
This information is unchecked



ROAD CLASSIFICATION
Secondary highway, all weather. Light-duty road, all weather,
hard surface. Improved surface.
Unimproved road, fair or dry
weather.

State Route
MAY 10 1972
ZERKEL NW, MINN.
N4722.5—W9522.5/7.5
1969
AMS 6978 IV NW—SERIES W872

THIS MAP COMPLIES WITH NATIONAL MAP ACCURACY STANDARDS
FOR SALE BY U. S. GEOLOGICAL SURVEY, DENVER, COLORADO 80225, OR WASHINGTON, D. C. 20242
A FOLDER DESCRIBING TOPOGRAPHIC MAPS AND SYMBOLS IS AVAILABLE ON REQUEST