

HAMILTON 16 MI.
GLASSTON (JUNC. U. S. ROUTE NO. 81) 9 MI.

JUNC. U. S. ROUTE NO. 79 3 1/2 MI.
EMERSON 25 MI.

KENNEDY (JUNC. U. S. ROUTE NO. 75) 4 MI.

DONALDSON (JUNC. U. S. ROUTE NO. 75) 4 3/4 MI.
KARLSTAD 22 1/2 MI.

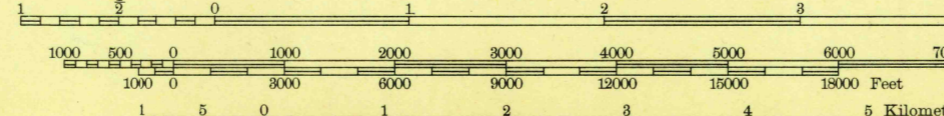
U. S. G. S.
FILE COPY
Inspection and Editing.

Topography by F. W. Hughes, V. L. Hill,
and Lewis Johnson
Surveyed in 1939

MANVEL (U. S. ROUTE NO. 81) 22 1/2 MI.
GRAND FORKS 43 MI.

BIG WOODS 15 MI.
EAST GRAND FORKS 46 MI.

Scale 1/62500



USGS
Historical File
Topographic Division

Polyconic projection. 1927 North American datum
5000 yard grid based on U. S. zone system, D
10000 foot grid based on Minnesota (North)
and North Dakota (North) rectangular
coordinate systems

DRAYTON, N. DAK.-MINN.

N4830-W9700/15

Contour interval 5 feet
Datum is mean sea level

HARD IMPERVIOUS SURFACES
OTHER SURFACE IMPROVEMENTS
② U. S. ROUTE 1940 ③ STATE ROUTE

APPROXIMATE MEAN
DECLINATION, 1939