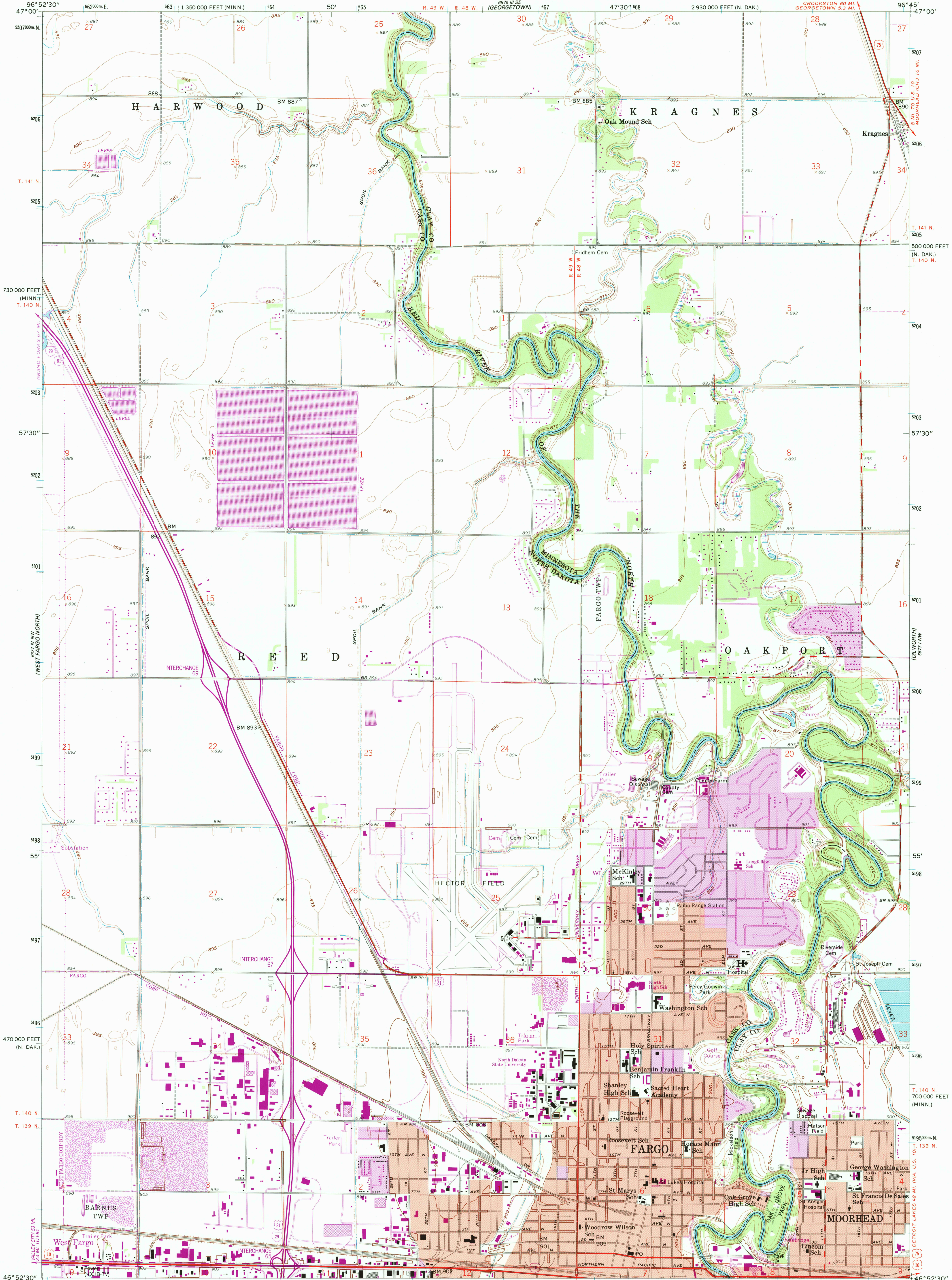
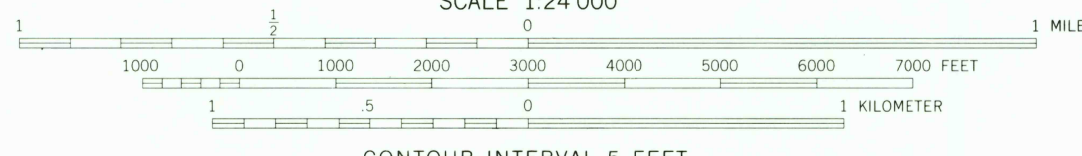
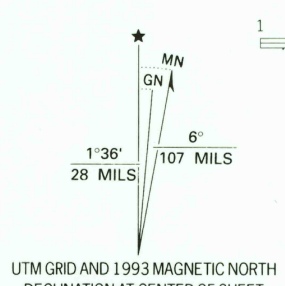


UNITED STATES  
DEPARTMENT OF THE INTERIOR  
GEOLOGICAL SURVEY

FARGO NORTH QUADRANGLE  
NORTH DAKOTA-MINNESOTA  
7.5 MINUTE SERIES (TOPOGRAPHIC)



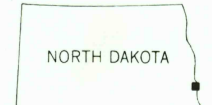
Produced by the United States Geological Survey  
Control by USGS and NOS/NOAA  
Planimetry compiled from aerial photographs taken 1954. Topography by planetable surveys 1959  
Projection: North Dakota coordinate system, south zone (Lambert conformal conic)  
10,000-foot grid ticks: North Dakota coordinate system, south zone and Minnesota coordinate system, central zone  
1000-meter Universal Transverse Mercator grid ticks, zone 14, shown in blue  
1927 North American Datum (NAD 27)  
North American Datum of 1983 (NAD 83) is shown by dashed corner ticks  
The values of the shift between NAD 27 and NAD 83 for 7.5-minute intersections are given in USGS Bulletin 1875  
Red tint indicates areas in which only landmark buildings are shown  
Fine red dashed lines indicate selected fence and field lines where generally visible on aerial photographs. This information is unchecked



SCALE 1:24 000  
CONTOUR INTERVAL 5 FEET  
NATIONAL GEODETIC VERTICAL DATUM OF 1929

THIS MAP COMPLIES WITH NATIONAL MAP ACCURACY STANDARDS  
FOR SALE BY U.S. GEOLOGICAL SURVEY  
DENVER, COLORADO 80225, OR RESTON, VIRGINIA 22092  
AND NORTH DAKOTA GEOLOGICAL SURVEY, BISMARCK, NORTH DAKOTA 58505  
A FOLDER DESCRIBING TOPOGRAPHIC MAPS AND SYMBOLS IS AVAILABLE ON REQUEST

Primary highway, hard surface  
Secondary highway, hard surface  
Interstate Route  
U. S. Route  
State Route  
Light-duty road, hard or improved surface  
Unimproved road



Revisions shown in purple and woodland compiled in cooperation with State of Minnesota agencies from aerial photographs taken 1990 and other sources  
Contours not revised. This information not field checked  
Map edited 1993  
Purple tint indicates extension of urban areas

FARGO NORTH, N. DAK.-MINN.  
46096-H7-TF-024

1959  
REVISED 1993  
DMA 6677 IV NE-SERIES V871

