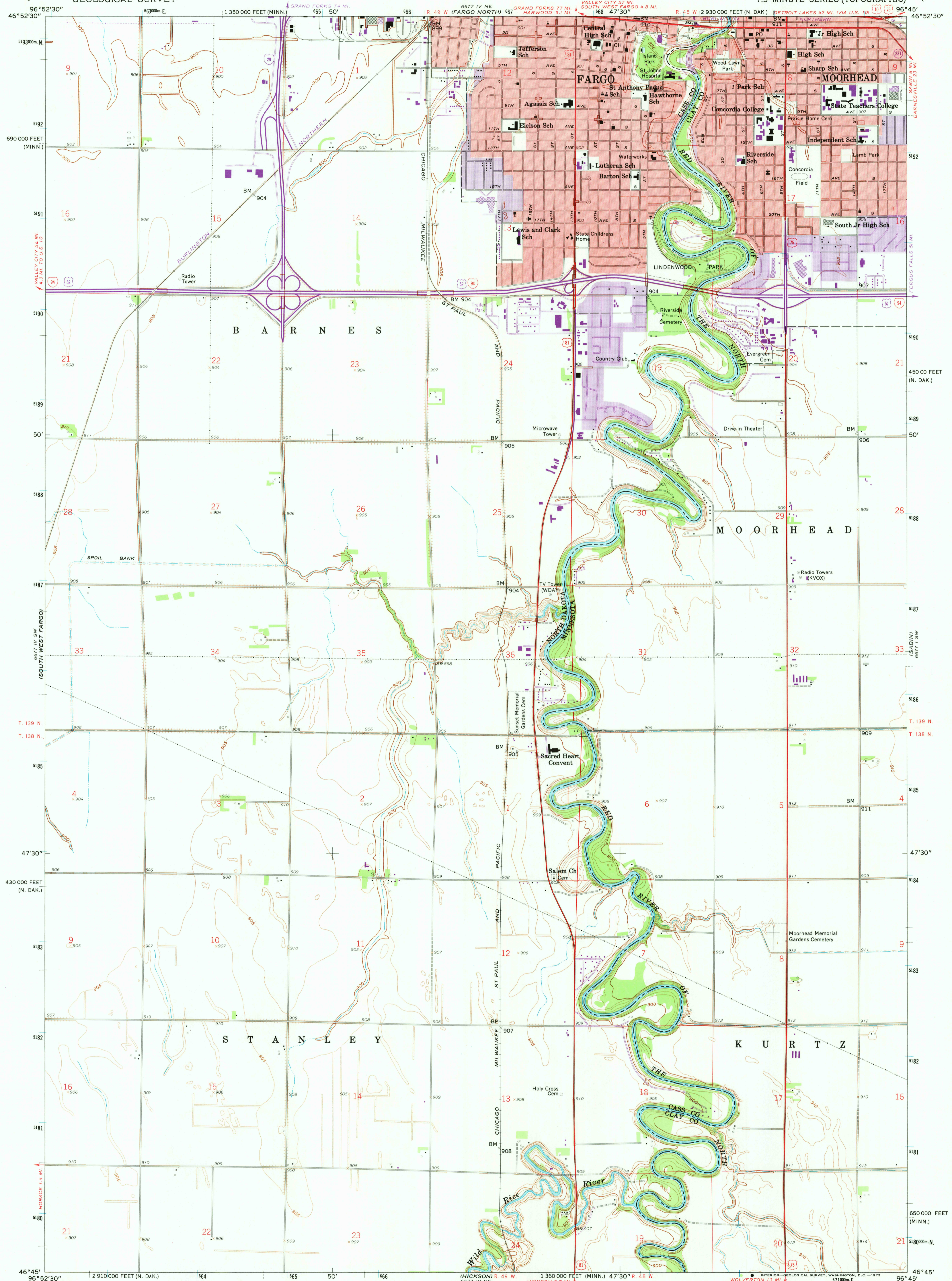
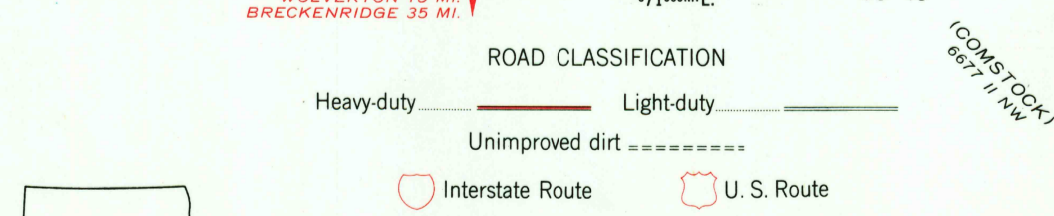
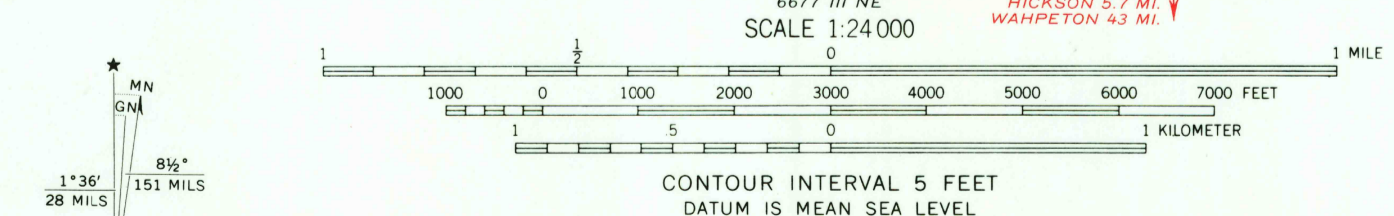


UNITED STATES
DEPARTMENT OF THE INTERIOR
GEOLOGICAL SURVEY

FARGO SOUTH QUADRANGLE
NORTH DAKOTA-MINNESOTA
7.5 MINUTE SERIES (TOPOGRAPHIC)



Mapped, edited, and published by the Geological Survey
Control by USGS and USC&GS
Culture and drainage in part compiled from aerial photographs taken 1954. Topography by planetable surveys 1959
Polyconic projection. 1927 North American datum
10,000-foot grids based on North Dakota coordinate system, south zone, and Minnesota coordinate system, central zone
1000-meter Universal Transverse Mercator grid ticks, zone 14, shown in blue
Red tint indicates areas in which only landmark buildings are shown
Revisions shown in purple compiled from aerial photographs taken 1971. This information not field checked
Purple tint indicates extension of urban areas



UTM GRID AND 1971 MAGNETIC NORTH DECLINATION AT CENTER OF SHEET
THIS MAP COMPLIES WITH NATIONAL MAP ACCURACY STANDARDS
FOR SALE BY U. S. GEOLOGICAL SURVEY, DENVER, COLORADO 80225, OR WASHINGTON, D. C. 20242
AND BY THE STATE WATER COMMISSION, BISMARCK, NORTH DAKOTA 58501
A FOLDER DESCRIBING TOPOGRAPHIC MAPS AND SYMBOLS IS AVAILABLE ON REQUEST

QUADRANGLE LOCATION
NORTH DAKOTA
FARGO SOUTH, N. DAK.-MINN.
N4645-W9645/7.5
1959
PHOTO REVISION 1971
AMS 6677 IV SE-SERIES V871