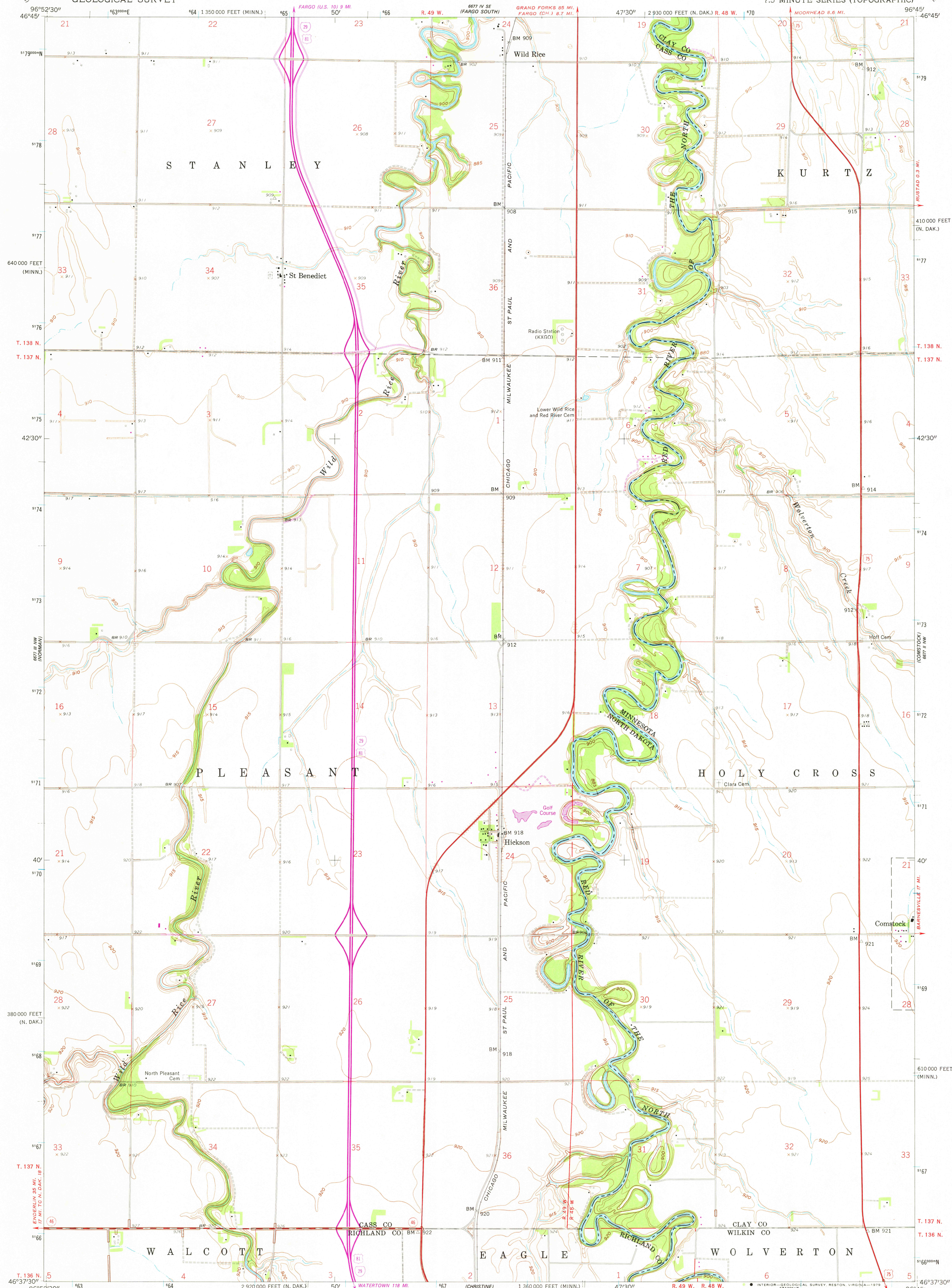
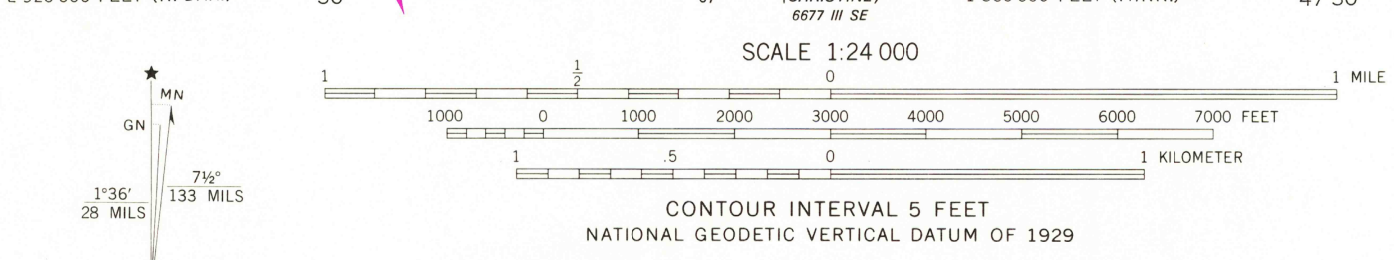


UNITED STATES
DEPARTMENT OF THE INTERIOR
GEOLOGICAL SURVEY

HICKSON QUADRANGLE
NORTH DAKOTA-MINNESOTA
7.5 MINUTE SERIES (TOPOGRAPHIC)



Mapped, edited, and published by the Geological Survey
Control by USGS and USC&GS
Culture and drainage in part compiled from aerial photographs taken 1954. Topography by planetable surveys 1959
Polyconic projection. 1927 North American datum
10,000-foot grids based on North Dakota coordinate system, south zone, and Minnesota coordinate system, central zone
To place on the predicted North American Datum 1983 move the projection lines 7 meters north and 27 meters east as shown by dashed corner ticks
1000-meter Universal Transverse Mercator grid ticks, zone 14, shown in blue
Revisions shown in purple compiled from aerial photographs taken 1977. Map edited 1979. This information not field checked



THIS MAP COMPLIES WITH NATIONAL MAP ACCURACY STANDARDS
FOR SALE BY U. S. GEOLOGICAL SURVEY, DENVER, COLORADO 80225, OR RESTON, VIRGINIA 22092
AND STATE WATER COMMISSION, BISMARCK, NORTH DAKOTA 58501
A FOLDER DESCRIBING TOPOGRAPHIC MAPS AND SYMBOLS IS AVAILABLE ON REQUEST

ROAD CLASSIFICATION
Heavy-duty ——— Light-duty ———
Medium-duty - - - - - Unimproved dirt - - - - -
U. S. Route ——— State Route ———
Interstate Route ———

UTM GRID AND 1979 MAGNETIC NORTH DECLINATION AT CENTER OF SHEET
1336 714
28 MILS 133 MILS

QUADRANGLE LOCATION
NORTH DAKOTA

HICKSON, N. DAK.—MINN.
N 4637.5—W 9645/7.5
PHOTOREVISED 1979
DMA 6677 III NE—SERIES V871

FEB 9 1982
2750