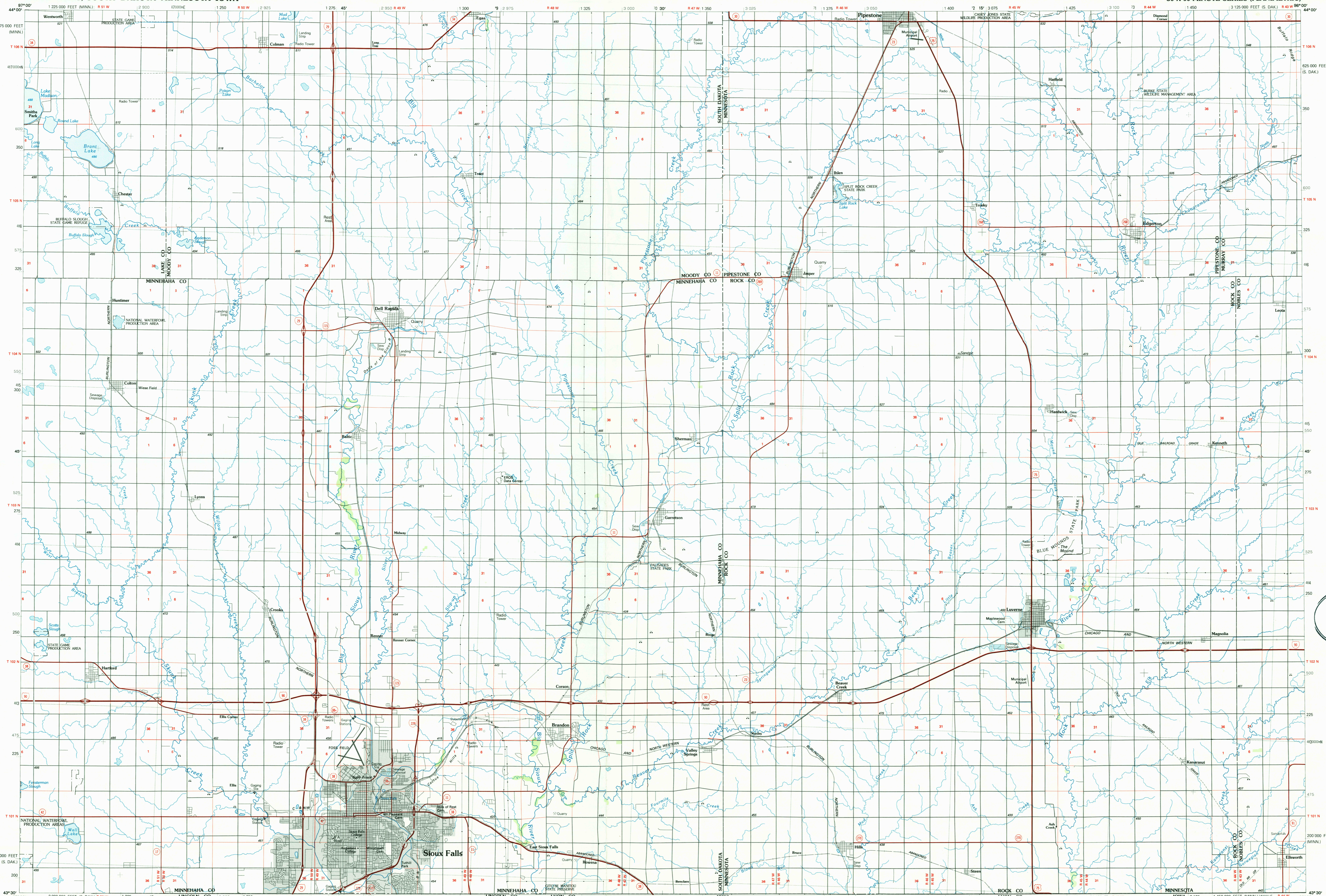


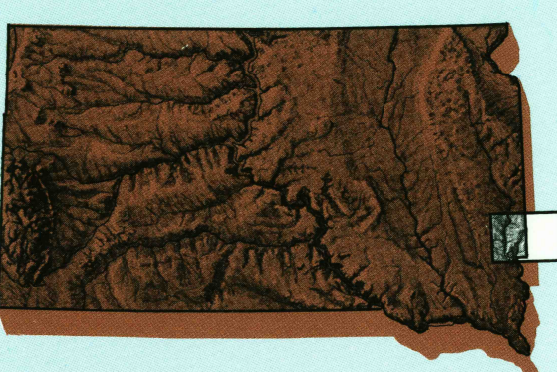
SIoux FALLS, SOUTH DAKOTA-MINNESOTA-IOWA

30 X 60 MINUTE SERIES (PLANIMETRIC)



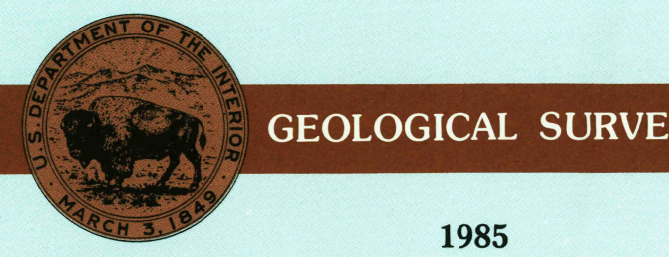
Sioux Falls S. DAK.-MINN.-IOWA

1:100 000-scale planimetric map



30 X 60 MINUTE QUADRANGLE SHOWING

- Elevations in meters
- Highways, roads and other manmade structures
- Water features
- Woodland areas
- Geographic names



Prepared by the United States Geological Survey  
 Compiled from USGS 1:24 000-scale topographic maps dated 1962-1980. Planimetry revised from aerial photographs taken 1984 and other source data. Revised information not field checked. Map edited 1985.  
 Projection and 10 000-meter grid, zone 14, Universal Transverse Mercator  
 25 000-foot grid ticks based on South Dakota coordinate system, south zone and Minnesota coordinate system, south zone 1927 North American Datum  
 To place on the predicted North American Datum 1983, move the projection lines 7 meters north and 26 meters east  
 There may be private inholdings within the boundaries of the National or State Reservations shown on this map

NATIONAL GEODETIC VERTICAL DATUM OF 1929 ELEVATIONS SHOWN TO THE NEAREST METER

THIS MAP COMPLIES WITH NATIONAL MAP ACCURACY STANDARDS

Meters	Feet
1	3.2808
2	6.5617
3	9.8425
4	13.1234
5	16.4042
6	19.6850
7	22.9659
8	26.2467
9	29.5275
10	32.8084

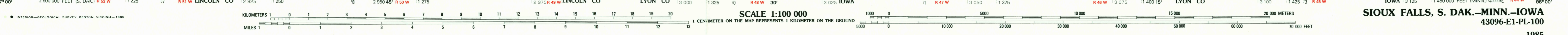
To convert meters to feet multiply by 3.2808  
 To convert feet to meters multiply by 0.3048

FOR SALE BY U.S. GEOLOGICAL SURVEY  
 DENVER, COLORADO 80225, OR RESTON, VIRGINIA 22092  
 MAR 27 1986  
 REC'D FILE COPY

Topographic Map Symbols

- Primary highway, hard surface
- Secondary highway, hard surface
- Light duty road, principal street, hard or improved surface
- Other road or street, trail
- Road marker, interstate, U.S. State
- Railroad: standard gauge, narrow gauge
- Bridge, overpass, underpass
- Tunnel: road, railroad
- Built up area, locality, elevation
- Airport: landing field, landing strip
- National boundary
- State boundary
- County boundary
- National or State reservation boundary
- Land grant boundary
- U.S. public lands survey: range, township, section
- Range, township, section line, protracted
- Power transmission line, pipeline
- Dam, dam with lock
- Cemetery, building
- Windmill, water well, spring
- Mine shaft, adit or cave, mine, quarry, gravel pit
- Ramp, cliff dwelling, picnic area, U.S. location monument
- Dotted surface: strip mine, lava, sand
- Contours: index, intermediate, supplementary
- Bathymetric contours: index, intermediate
- Stream, lake: perennial, intermittent
- Rapids, large and small; falls, large and small
- Area to be submerged; marsh, swamp
- Land subject to controlled inundation; woodland
- Scrub, mangrove
- Orchard; vineyard

A pamphlet describing topographic maps is available on request



SIoux FALLS, S. DAK.-MINN.-IOWA 43096-E1-PL-100