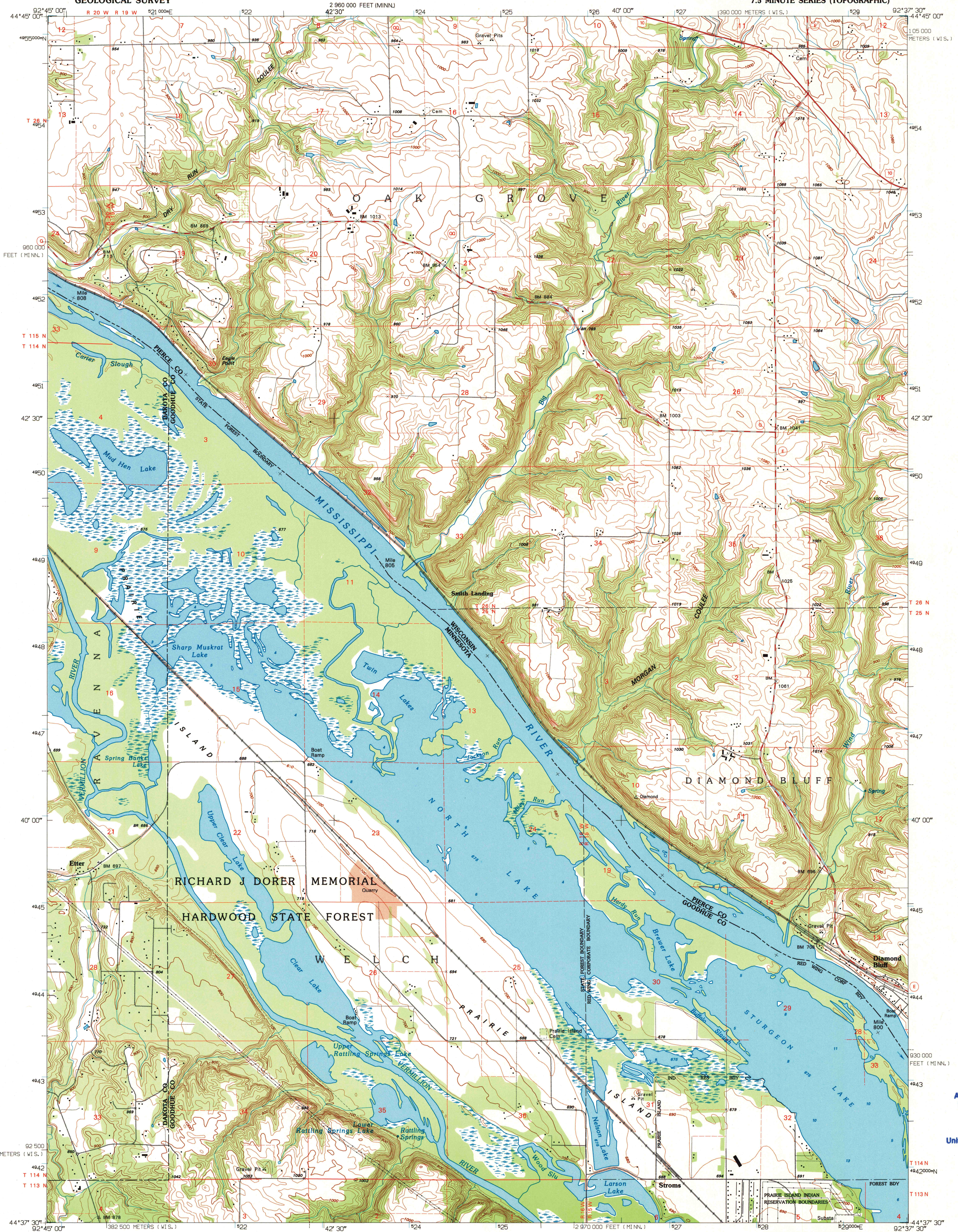
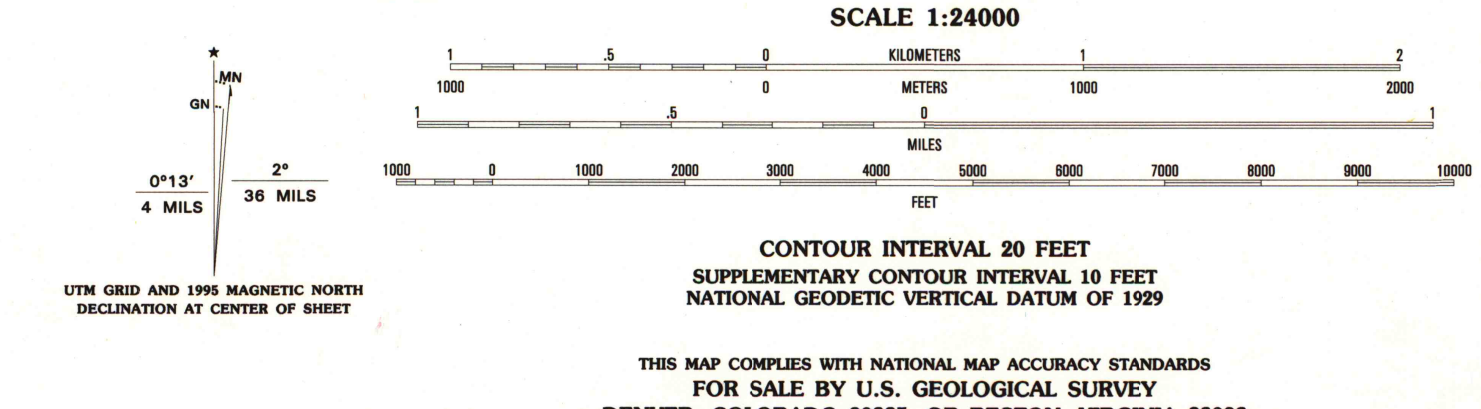


UNITED STATES
DEPARTMENT OF THE INTERIOR
GEOLOGICAL SURVEY

DIAMOND BLUFF WEST QUADRANGLE
WISCONSIN-MINNESOTA
7.5 MINUTE SERIES (TOPOGRAPHIC)



Produced by the United States Geological Survey
Compiled by photogrammetric methods from imagery dated 1974
Field checked 1974. Revised in cooperation with
State of Minnesota agencies from imagery dated 1991-92
PLSS and survey control current as of 1974. Map edited
1995. Contours not revised.
Hydrography compiled from information furnished by
Minnesota Department of Natural Resources
North American Datum of 1983 (NAD 83). Projection and
blue 1000-meter ticks: Universal Transverse Mercator, zone 15
2 500-meter ticks: Wisconsin Coordinate System of 1983 (central zone)
10 000-foot ticks: Minnesota Coordinate System of 1983 (south zone)
North American Datum of 1927 (NAD 27) is shown by dashed
corner ticks. The values of the shift between NAD 83 and NAD 27
for 7.5-minute intersections are obtainable from National Geodetic
Survey NADCON software.
There may be private landholdings within the boundaries of
the National or State reservations shown on this map.



ROAD CLASSIFICATION

- Primary highway: solid line with double red dashes
- Light-duty road, hard or improved surface: solid line with red dashes
- Secondary highway: solid line with black dashes
- Unimproved road: solid line with black dashes
- Interstate Route: red shield
- U.S. Route: red shield with number
- State Route: white shield with number

QUADRANGLE LOCATION

1	2	3
4	5	6
7	8	

1 Prescott
2 River Falls West
3 River Falls East
4 Hastings
5 Diamond Bluff East
6 Meville
7 Welch
8 Red Wing

DIAMOND BLUFF WEST, WI-MN
44092-F6-TF-024
1992
DMA 2473 II NW-SERIES V861

A.H. ROBINSON
MAP LIBRARY
JAN 18 1995
University of Wisconsin
Madison

U.S. Regional
Depository Copy
DO NOT DISCARD

1995
copy
1-1

ISBN 0-607-01161-5
9 780607 011615