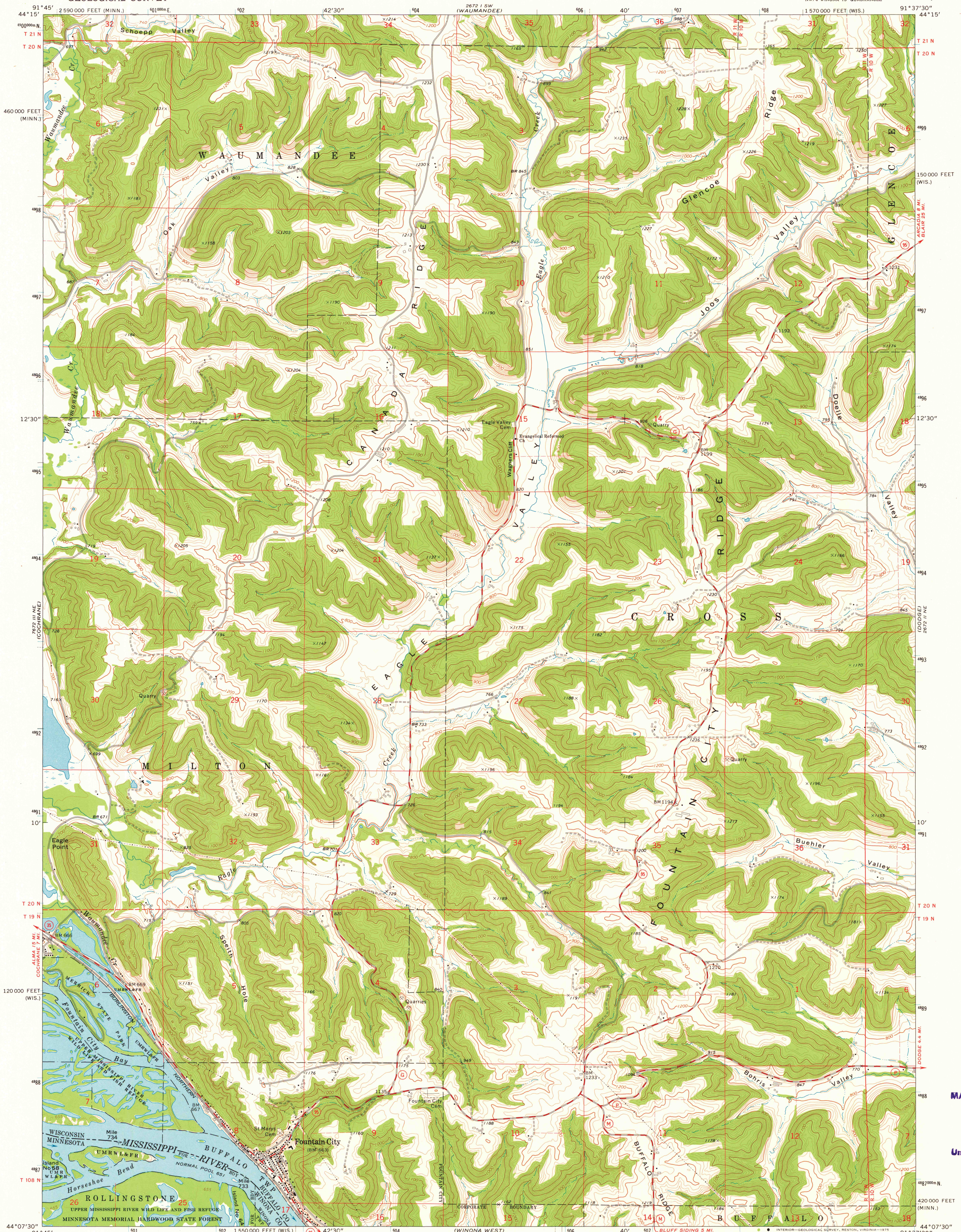
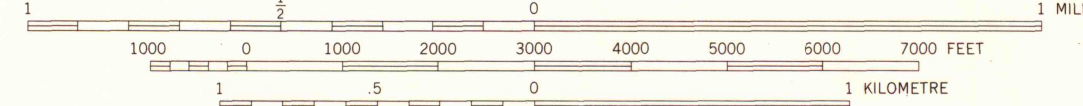
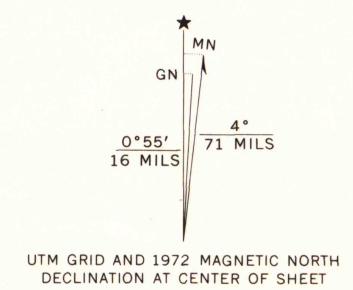


UNITED STATES
DEPARTMENT OF THE INTERIOR
GEOLOGICAL SURVEY

FOUNTAIN CITY QUADRANGLE
WISCONSIN-MINNESOTA
7.5 MINUTE SERIES (TOPOGRAPHIC)
NW/4 WINONA 15' QUADRANGLE



Mapped, edited, and published by the Geological Survey
Control by USGS and NOS/NOAA
Topography by photogrammetric methods from aerial photographs taken 1972. Field checked 1972.
Projection: Wisconsin coordinate system, central zone (Lambert conformal conic)
10,000-foot grid ticks based on Wisconsin coordinate system, central zone and Minnesota coordinate system, south zone
1000-metre Universal Transverse Mercator grid ticks, zone 15, shown in blue. 1927 North American datum
Fine red dashed lines indicate selected fence and field lines where generally visible on aerial photographs. This information is unchecked



ROAD CLASSIFICATION

Primary highway, hard surface	Light-duty road, hard or improved surface
Secondary highway, hard surface	Unimproved road
Interstate Route	U. S. Route
	State Route

FOUNTAIN CITY, WIS.-MINN.
NW/4 WINONA 15' QUADRANGLE
N4407.5-W9137.5/7.5

1972
AMS 2672 II NW-SERIES V861

THIS MAP COMPLIES WITH NATIONAL MAP ACCURACY STANDARDS
FOR SALE BY U. S. GEOLOGICAL SURVEY, RESTON, VIRGINIA 22092
AND BY THE WISCONSIN GEOLOGICAL AND NATURAL HISTORY SURVEY, MADISON, WISCONSIN 53706
A FOLDER DESCRIBING TOPOGRAPHIC MAPS AND SYMBOLS IS AVAILABLE ON REQUEST

MAP AND AIR PHOTO
LIBRARY
APR 24 1976
University of Wisconsin

1972
COPY
1-1