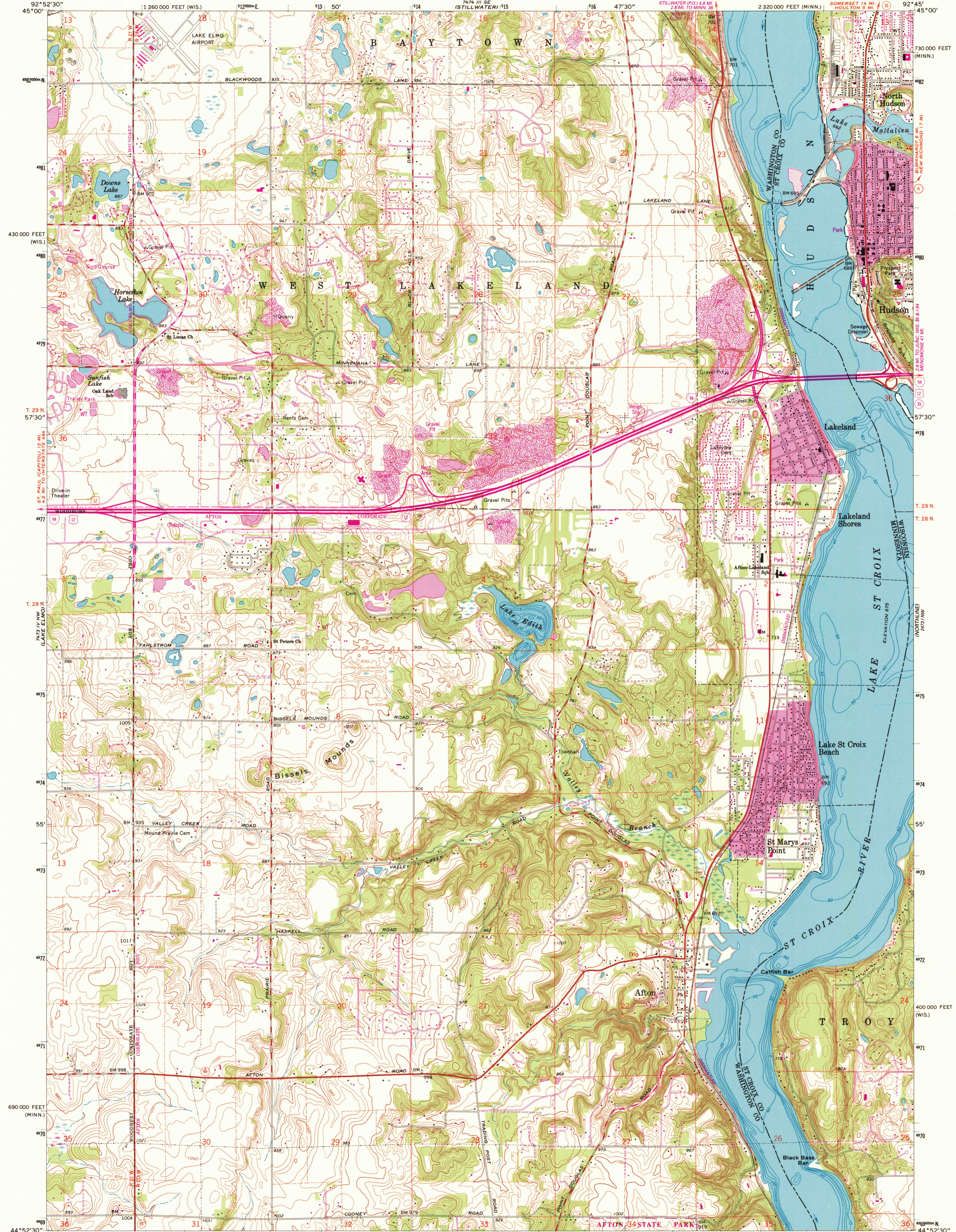
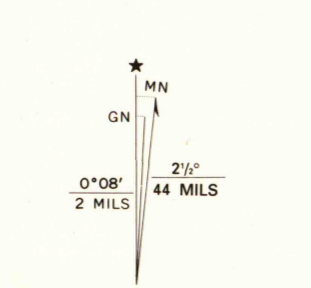


UNITED STATES
DEPARTMENT OF THE INTERIOR
GEOLOGICAL SURVEY

HUDSON QUADRANGLE
WISCONSIN-MINNESOTA
7.5 MINUTE SERIES (TOPOGRAPHIC)



Produced by the United States Geological Survey
in cooperation with Minnesota Department of Administration
Control by USGS, NOS/NOAA and USCE
Topography by photogrammetric methods from aerial photographs
taken 1947. Field checked 1949. Revised from aerial photographs
taken 1966. Field checked 1967.
Hydrography compiled from information furnished by
Minnesota Department of Natural Resources
Projection: Minnesota coordinate system, south zone
(Lambert conformal conic)
10,000-foot grid ticks: Minnesota coordinate system,
south zone and Wisconsin coordinate system, central zone
1000-meter Universal Transverse Mercator grid ticks, zone 15, shown in blue
1927 North American Datum (NAD 27)
North American Datum of 1983 (NAD 83) is shown by dashed corner ticks
The values of the shift between NAD 27 and NAD 83 for 7.5-minute
intersections are given in USGS Bulletin 1875
There may be private inholdings within the boundaries of
the National or State reservations shown on this map



SCALE 1:24 000
CONTOUR INTERVAL 10 FEET
NATIONAL GEODETIC VERTICAL DATUM OF 1929

U.S. Regional
Depository Copy
DO NOT DISCARD



ROAD CLASSIFICATION
Primary highway, hard surface — Light-duty road, hard or improved surface
Secondary highway, hard surface — Unimproved road
Interstate Route — U.S. Route — State Route

HUDSON, WIS.-MINN.
44092-H7-TF-024
1967
REVISED 1993
DMA 7473 IV NE-SERIES V872

1993
copy
1-1

A.H. ROBINSON
MAP LIBRARY
DEC 16 1993
University of Wisconsin
Madison

THIS MAP COMPLIES WITH NATIONAL MAP ACCURACY STANDARDS
FOR SALE BY U.S. GEOLOGICAL SURVEY
DENVER, COLORADO 80225, OR RESTON, VIRGINIA 22092
A FOLDER DESCRIBING TOPOGRAPHIC MAPS AND SYMBOLS IS AVAILABLE ON REQUEST

Revisions shown in purple and woodland compiled in cooperation with
State of Minnesota agencies from aerial photographs taken 1991
and other sources. Contours not revised. This information
not field checked. Map edited 1993
Purple tint indicates extension of urban areas