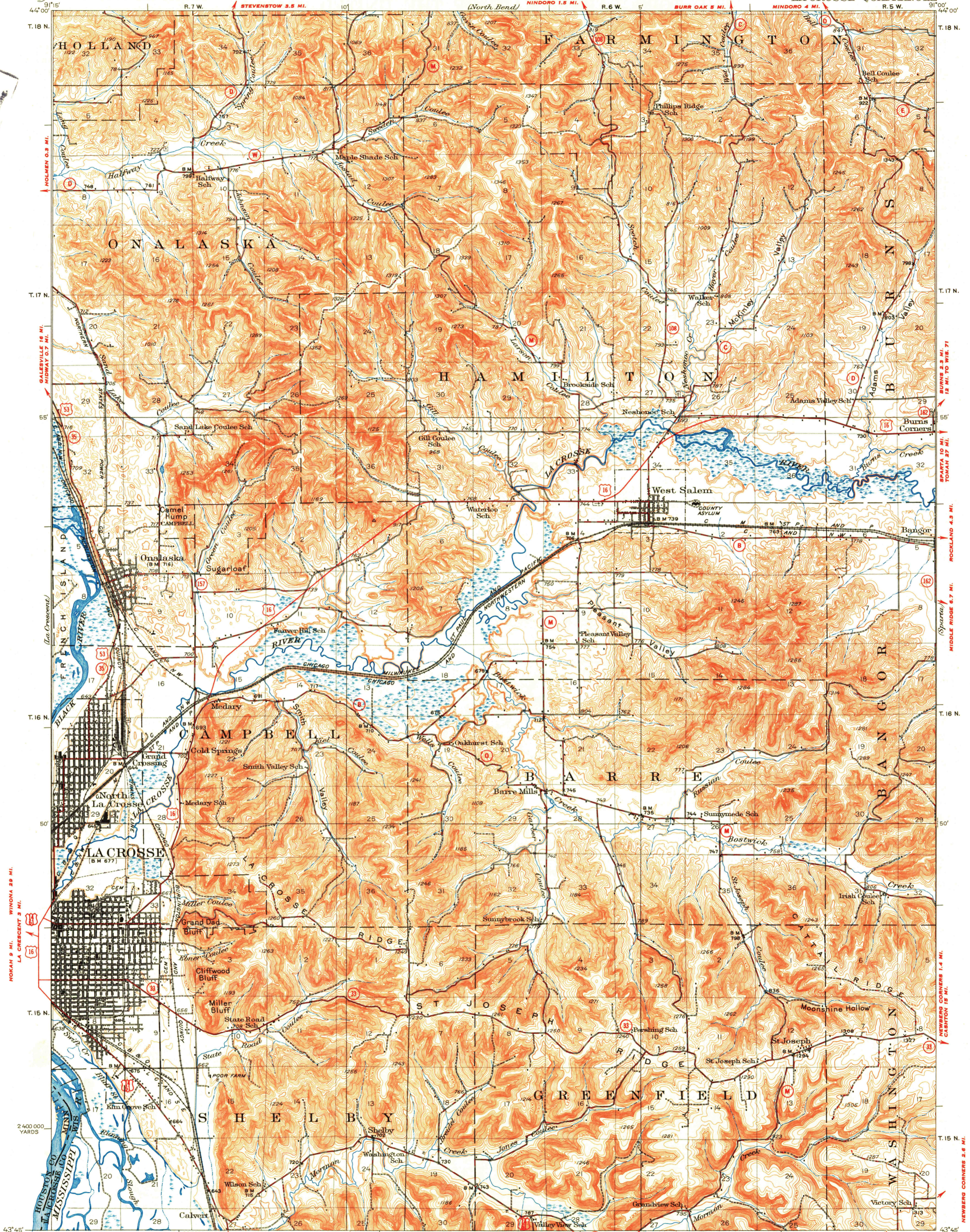
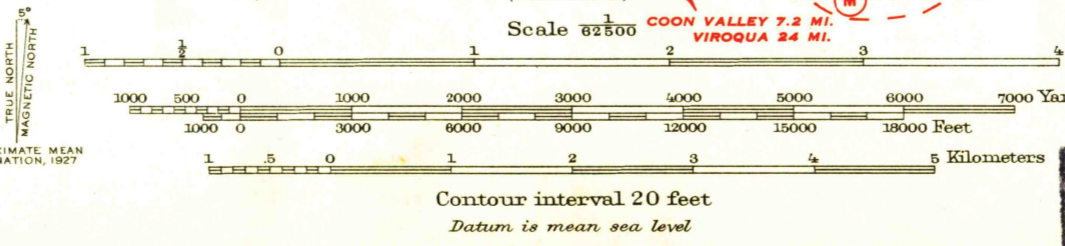


U.S.G.S.
FILE COPY
Imposition and Editing



Topography by J.G. Staack, J.C. Hilliard, and H.P. Jones
Culture and drainage in part compiled from aerial photographs
taken by Air Corps U.S. Army
Control by U.S. Geological Survey
Surveyed in 1921-1927

ROAD CLASSIFICATION
HARD-SURFACE ALL WEATHER ROADS
Medium-duty ——— **LANE'S LANE** Improved dirt
Medium-duty ——— **LANE'S LANE** Unimproved dirt
Loose-surface, graded, or narrow hard-surface — - -
U. S. Route State Route



U.S.G.S.
FILE COPY
Imposition and Editing

LA CROSSE, WIS-MINN.
Edition of 1930
reprinted 1950
N4345-W9100/15

USGS
Historical File
Topographic Division